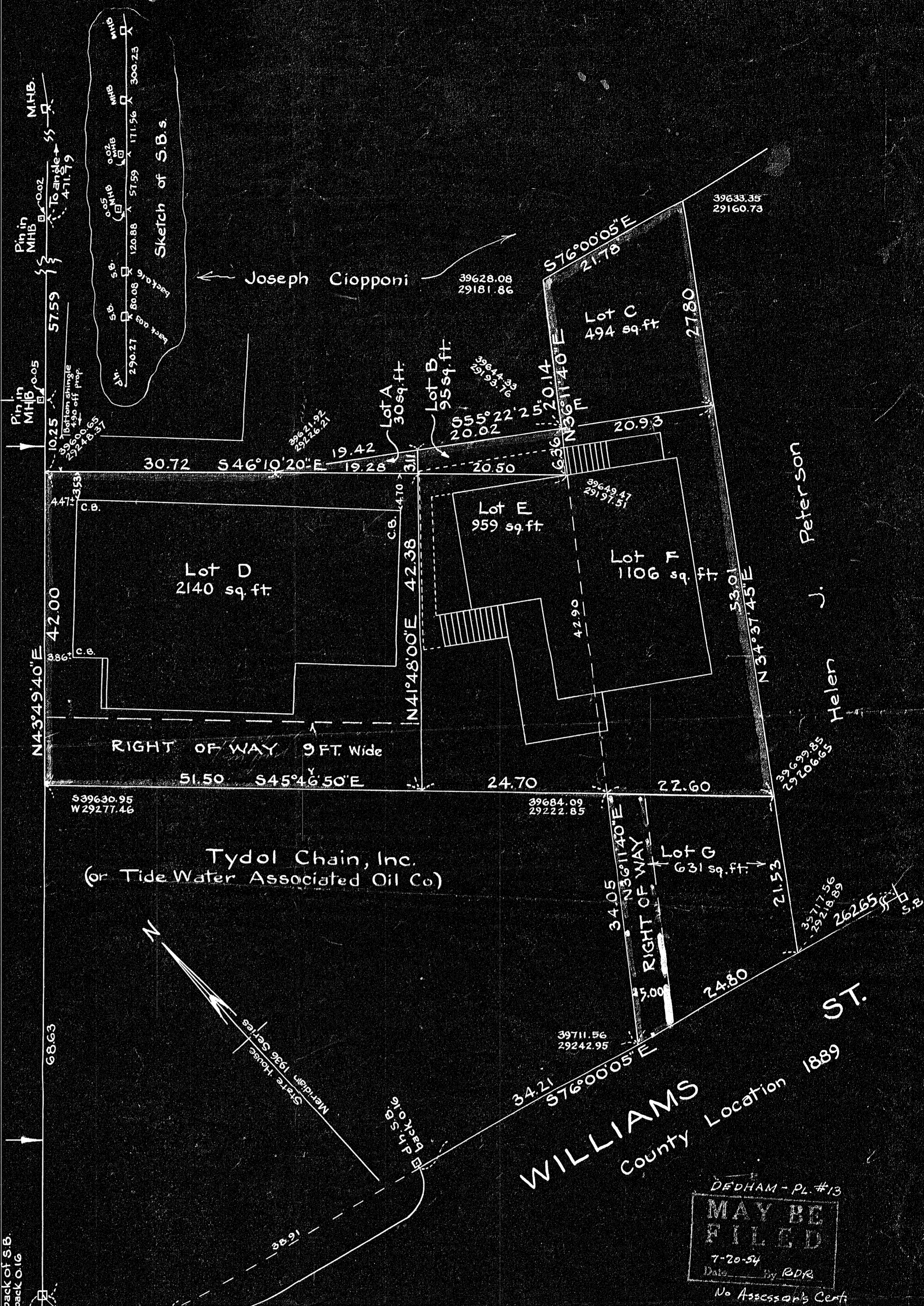


WASHINGTON ST.
County Location 1857

State Highway Location
Dec. 18, 1934



Tydol Chain, Inc.
(or Tide Water Associated Oil Co)

WILLIAMS ST.
County Location 1889

DEDHAM - PL. #13
MAY BE FILED
7-20-54
Date _____ by RDR
No Assessor's Cert

Plan of Land in
DEDHAM, MASS.
Scale 1 inch = 10 feet E.W. Pilling
Engineer

May 10, 1951

Notes: see Lease Norfolk 135-78 Apr. 1, 1936
Agreement 1260-353 Sept. 4, 1913

I certify that this plan was made in
accordance with Land Court Instructions, of 1950

E. W. Pilling
Civil Engineer

The conditions on this land
are unchanged Dec. 4, 1953 May 14, 1954
E. W. Pilling, Engineer

Dedham System
(approx. State House)

	D	W
DG1 D9	40107.80	29783.66
DG1 D8	39187.25	28900.07
D61 R	38502.36	28217.04

Decl'n with Mass. merid. 0°17'25.5"
Scale ratio " " coord. 0.000353

*Approval not required
under the subdivision contract
Dedham Planning Board
by authorized members.*
Charles Bartlett, Jr.
Walter W. Ludd
Harry J. Kulick, Jr.

25188