

PLAN OF LAND IN
STOUGHTON, MASS.

SCALE 1"=40' APRIL 17, 1954
Laban C. Morrill, Town Engr. of Stoughton
Address - 178 Washington Street
Canton, Mass.

AZIMUTH	DISTANCE	LATITUDE		DEPARTURE	
		N	S	E	W
N 15°-37'-50"E	346.62	333.802		93.391	
N 76°-53'-10"E	130.86	29.690		127.447	
N 48°-21'-06"E	14.13	9.390		10.558	
S 27°-02'-00"E	108.53		96.672	49.328	
S 51°-26'-40"W	90.50		56.406		70.771
S 23°-16'-00"E	86.00		79.006	33.971	
S 60°-00'-20"W	281.64		140.796		243.921
TOTALS	1058.28	372.882	372.880	314.695	314.692

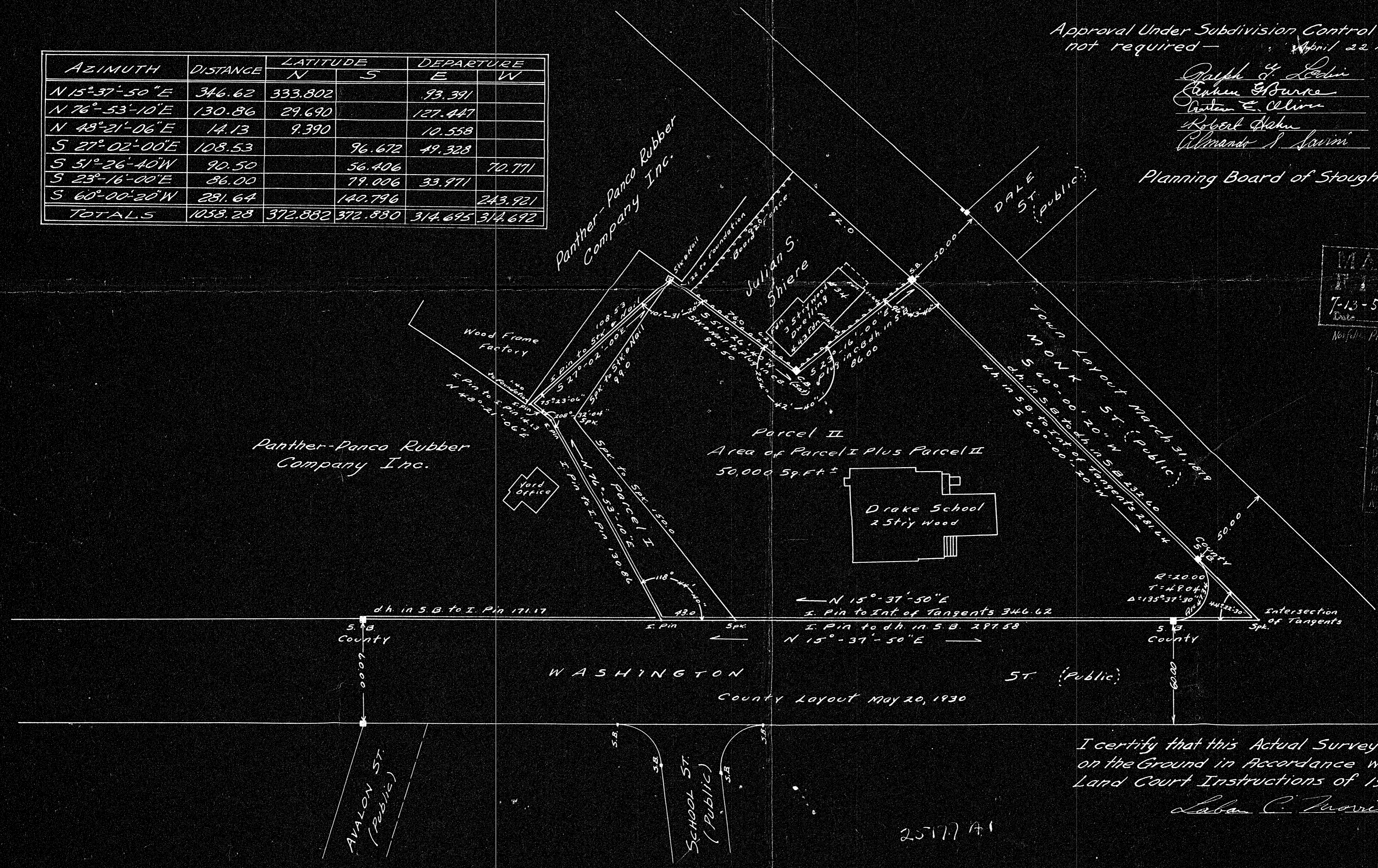
Approval Under Subdivision Control Law
not required - April 22, 1954

Joseph G. Lebin
Stephen G. Burke
Robert E. Oliver
Robert Hahn
Almondo S. Laurini

Planning Board of Stoughton, Mass.

MAY BE
FILED
7-13-54
Date
L.C.S.
No. 52

DEGREE PLAN
Order
Traverse
Add
Drawn by
Made by
Inspected by
Approved



I certify that this Actual Survey was made
on the Ground in Accordance with the
Land Court Instructions of 1950.
Laban C. Morrill

2577 A1

2 Pages