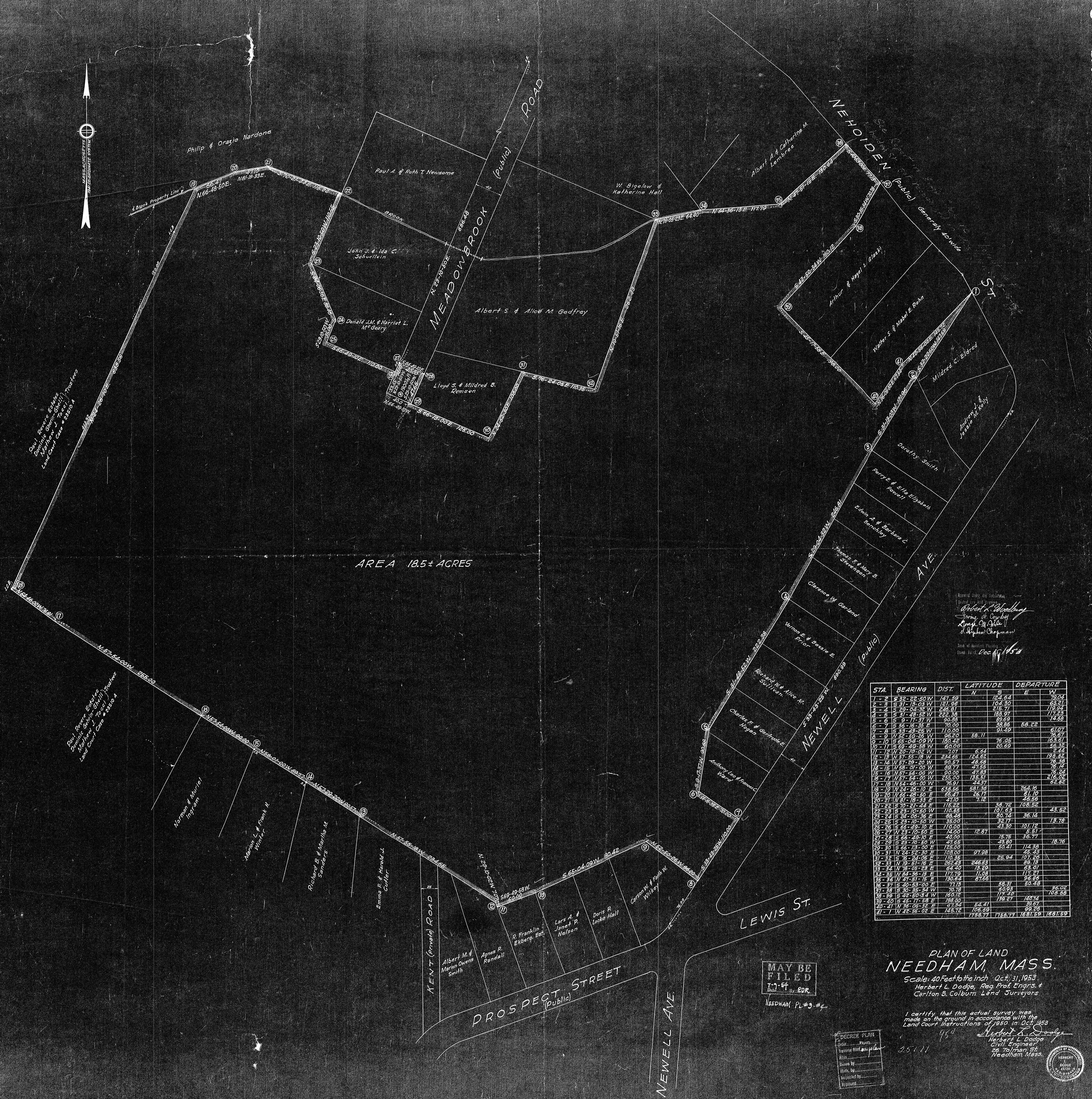


SP112S

SP112S



AREA 18.5± ACRES

STA.	BEARING	DIST.	LATITUDE		DEPARTURE	
			N	S	E	W
1-2	S 32-22-50 W	147.59		123.54		79.04
2-3	S 31-15-23 W	121.99		104.30		63.21
3-4	S 20-04-32 W	246.81		215.71		119.94
4-5	S 31-48-52 W	222.38		183.97		111.23
5-6	S 17-37-11 W	203.53		169.69		114.59
6-7	S 58-16-35 E	70.00			38.85	58.22
7-8	S 33-48-25 W	110.00			91.49	61.07
8-9	N 25-50-26 W	21.20	58.11		75.05	163.51
9-10	S 65-04-03 W	180.48			20.69	56.32
10-11	S 69-29-58 W	60.00				
11-12	N 20-10-02 W	1.07	6.62			
12-13	N 31-05-36 E	234.65	124.65			193.42
13-14	N 57-29-50 W	90.57			49.69	76.38
14-15	N 58-21-00 W	89.77			47.55	76.14
15-16	N 57-54-00 W	90.00			47.83	76.24
16-17	N 17-54-10 W	255.00			73.51	215.02
17-18	N 54-46-00 W	78.91			44.37	62.82
18-19	N 24-26-10 E	638.55	581.38		264.16	
19-20	N 66-48-50 E	65.91		26.11		51.19
20-21	N 31-13-31 E	47.10		3.72		46.55
21-22	S 70-21-44 E	115.22			58.72	108.52
22-23	S 23-10-50 W	110.55			101.53	43.52
23-24	S 23-05-30 E	98.35			60.41	36.14
24-25	S 23-10-50 W	32.00			32.11	13.78
25-26	S 66-29-10 E	110.00			43.30	101.12
26-27	N 23-10-50 W	74.00	12.87		75.75	36.17
27-28	N 21-52-30 E	103.00			50.41	75.43
28-29	S 23-10-50 W	47.85			43.80	18.76
29-30	S 66-13-00 E	125.00				
30-31	N 21-52-30 E	103.00	97.98			
31-32	S 76-24-05 E	110.35			25.94	107.26
32-33	N 19-51-16 E	262.43	246.83			89.13
33-34	N 10-03-23 E	62.40			12.30	63.01
34-35	N 84-38-15 E	177.79			11.09	177.21
35-36	N 41-51-15 E	130.64	87.56			96.66
36-37	S 40-53-00 E	77.15		38.31		60.48
37-38	S 23-35-33 W	70.78			177.40	108.88
38-39	S 28-50-33 W	180.12				
39-40	S 45-17-58 E	198.00			138.27	140.74
40-41	N 36-05-32 E	145.72	54.41			98.26
41-1	N 45-25-02 E	1758.77	1758.77		1681.59	1681.59

PLAN OF LAND NEEDHAM MASS.

Scale: 40 Feet to the inch Oct. 31, 1953 Herbert L. Dodge, Reg. Prof. Engrs. & Carlton B. Colburn, Land Surveyors

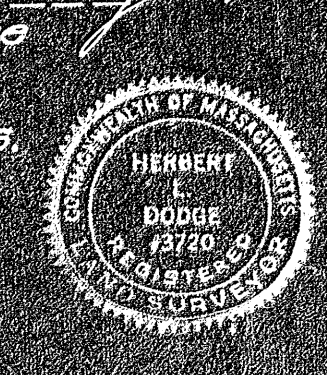
I certify that this actual survey was made on the ground in accordance with the Land court instructions of 1950 in Case No. 498

Herbert L. Dodge, Civil Engineer, 26 Tolman St., Needham Mass.

MAY BE FILED 7-54 EDR

NEEDHAM PL # 9 # 4

DECREE PLAIN... 25171



SP112S

SP112S