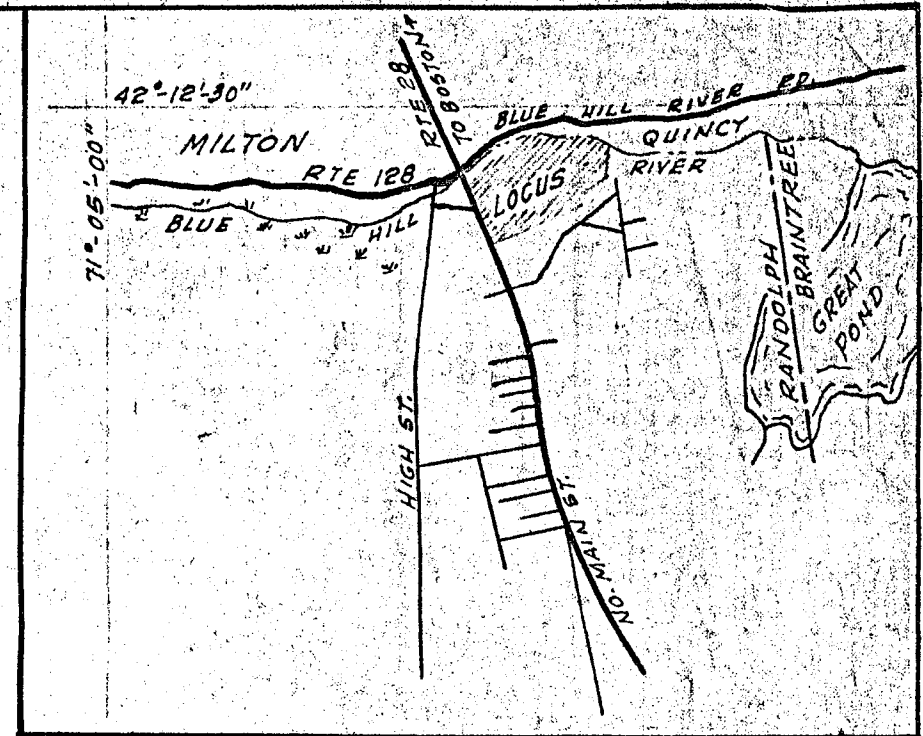
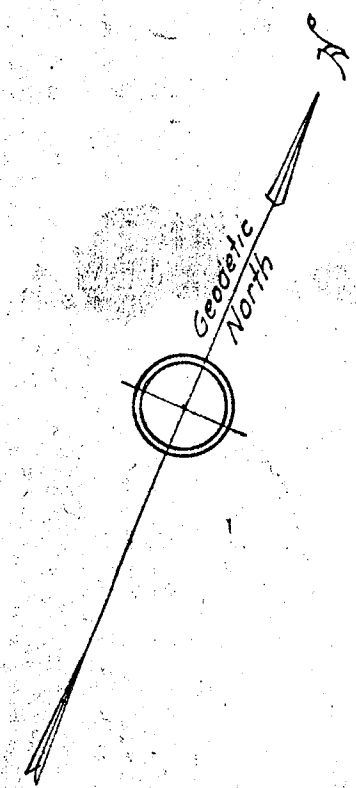


X=718,331.57
Y=440,126.32
M128C5
Mass Geod. Bd

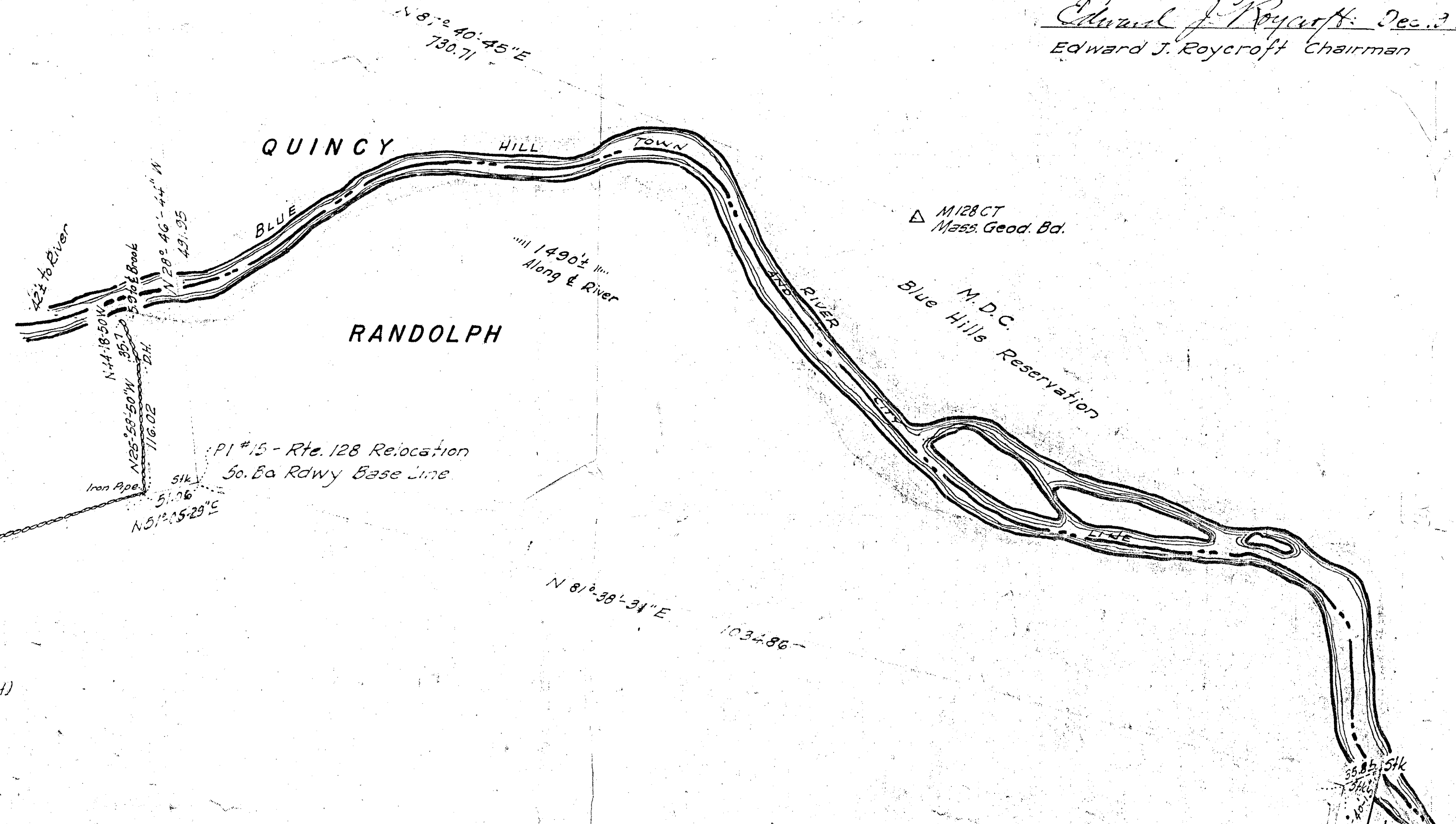
No action required under "Sub-Division Control Act"
Randolph Planning Board
Edward J. Roycroft, Dec. 3, 1953
Edward J. Roycroft, Chairman



LOCUS PLAN
Scale 2 Inches = 1 Mile



Quincy Hill
Blue Hill
Quincy River
Blue Hills Reservation



Ignazio De Pasqua
Disc. DH
N 43° 18' 30" E
N 46° 54' 44" E
N 48° 46' 10" E

BLUE HILLS DEVELOPMENT CO.
30.4± Acres (Total)

LOT "B"
25.4± Acres

LOT "A"
5.0± Acres

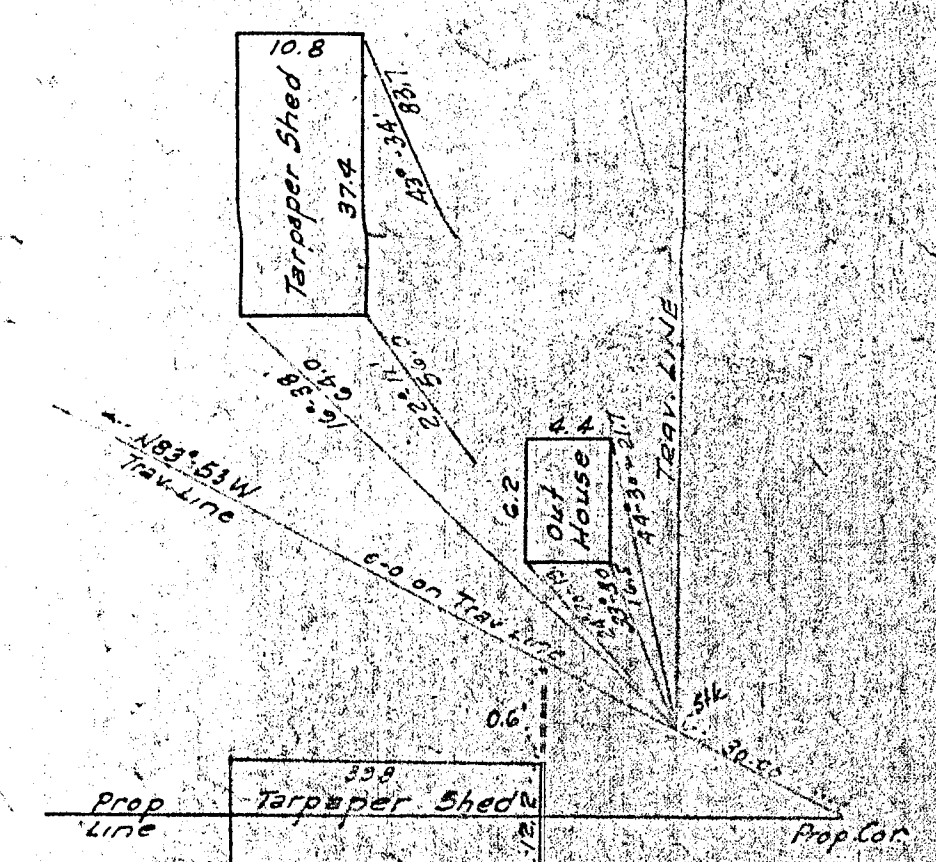
Ray Mucci

MARTINDALE RD. Public

CHRISTY LANE

I certify that this actual survey was made on the ground
in accordance with the Land Court Instructions of 1950
on or between Oct & Nov 1953 Date Dec 17, 1953

Richard E. Splaine
Richard E. Splaine - Surveyor
6 New Terrace Road
Brookline, Mass.



Detail at S.W. Property Corner
Not to scale

MAY BE FILED
5-26-54
E.EDK

No Subdivision Control Law
was in effect in this city or
town on (date) May 20, 1954

PLAN OF LAND
IN
RANDOLPH MASS.
Scale 1" = 80' Dec. 1953