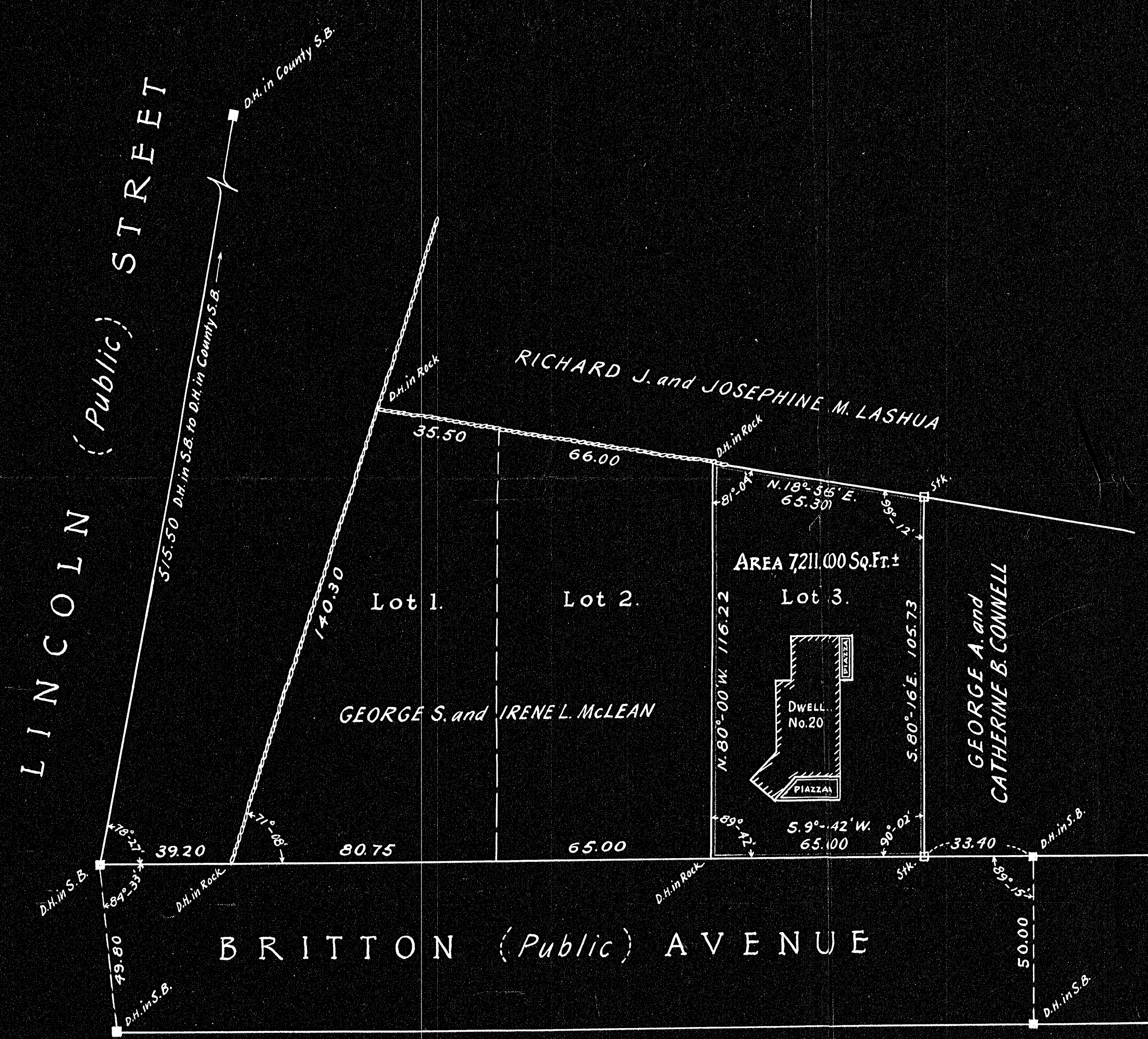
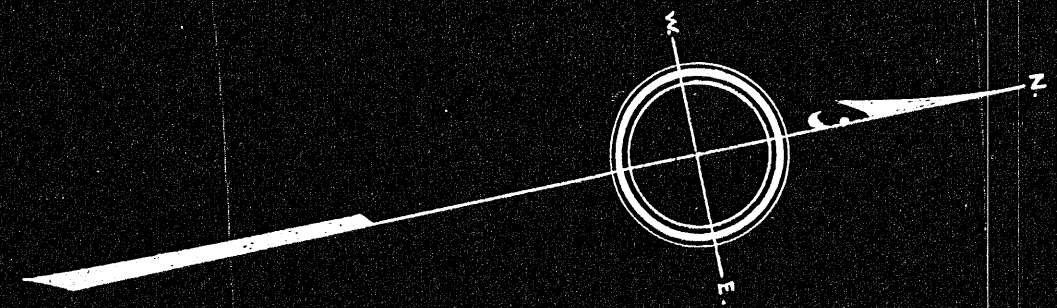


PLAN OF LAND IN STOUGHTON, MASS.

SCALE 30 FT.=1 IN. - OCT. 7, 1953

Walter G. Pratt, Surveyor - 90 Lincoln St., Stoughton, Mass.



AZIMUTH	Distance	Latitude		Departure	
		N	S	E	W
N. 80°-00' W.	116.22	20.1747			114.4534
N. 18°-56' E.	65.30	61.7607		21.1833	
S. 80°-16' E.	105.73		17.8683	104.2074	
S. 9°-42' W.	65.00		64.0705		10.9460
TOTALS	352.25	81.9354	81.9388	125.3907	125.3994

Approval Under Subdivision Control Law
Not Required Oct. 20, 1953

Arthur S. Eccleston
Sharon M. Pata
Charles C. Rhodes, Jr.

Planning Board of The
Town of Stoughton, Mass.

25067
MAY BE
FILED
Date 5-12-54 By R.C.C.
pet'n 5-12-54 NO A

I certify that this actual survey was made on the ground
in accordance with the Land Court Instructions of 1950
October 7, 1953 Walter G. Pratt, Surveyor.

25067