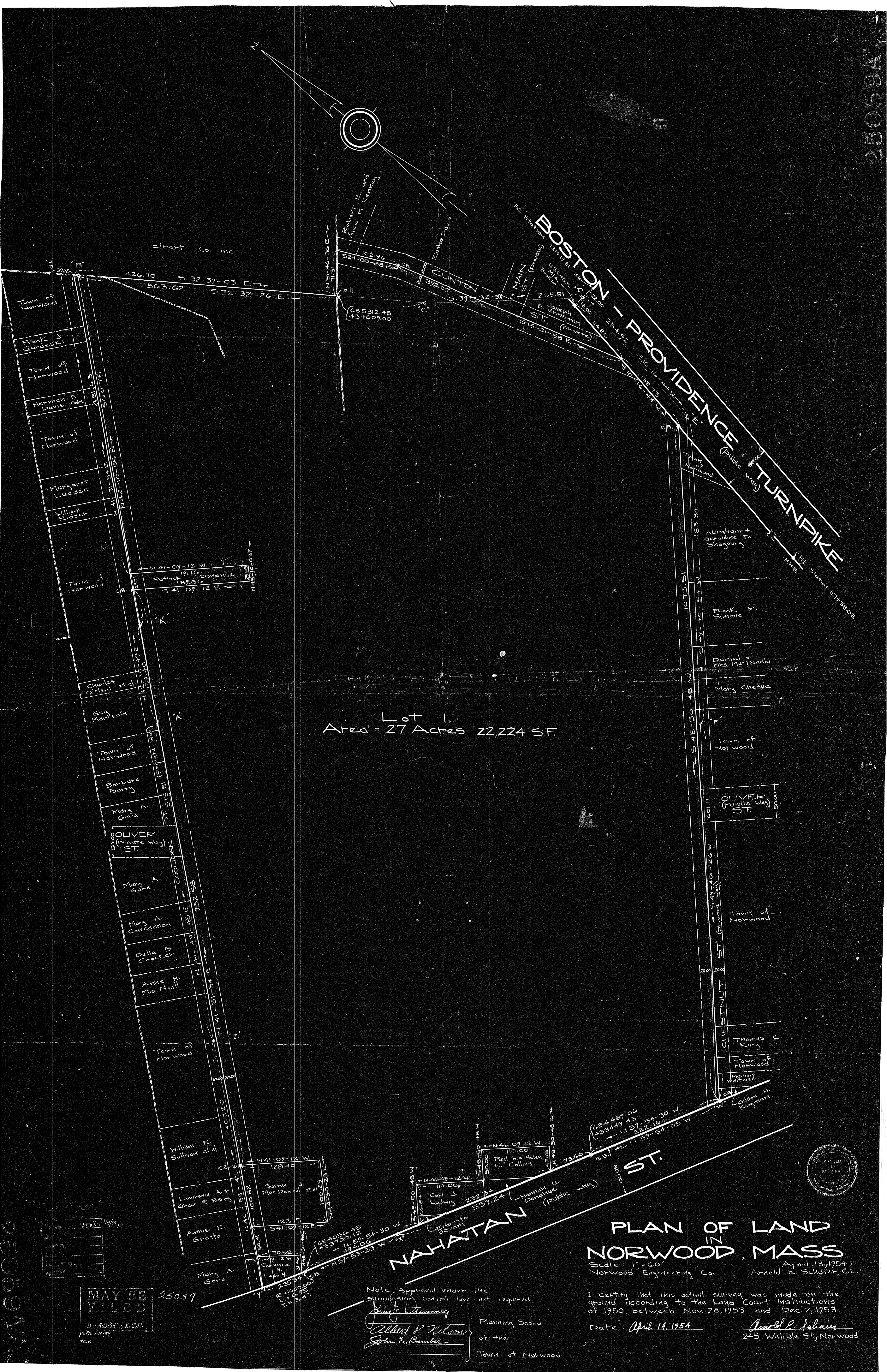


25059A



Lot 1  
Area = 27 Acres 22,224 SF

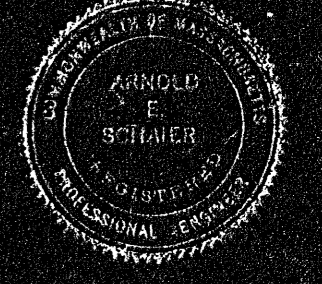
# PLAN OF LAND IN NORWOOD, MASS

Scale: 1" = 60'  
Norwood Engineering Co. April 13, 1954  
Arnold E. Schrier, C.E.

I certify that this actual survey was made on the ground according to the Land Court Instructions of 1950 between Nov. 28, 1953 and Dec. 2, 1953.

Date: April 14, 1954  
Arnold E. Schrier  
245 Walpole St., Norwood

Note: Approval under the Subdivision Control Law not required.  
James J. Dunneey  
Albert P. Nelson  
John E. Bamber  
Planning Board  
of the  
Town of Norwood



RECORD PLAN

City of Norwood	25059
County of Norfolk	
State of Massachusetts	
Drawn by	
Checked by	
Approved by	

MAY BE FILED  
25059  
D-5-13-54, R.C.C.  
p.p. 5-13-54  
T.M.