

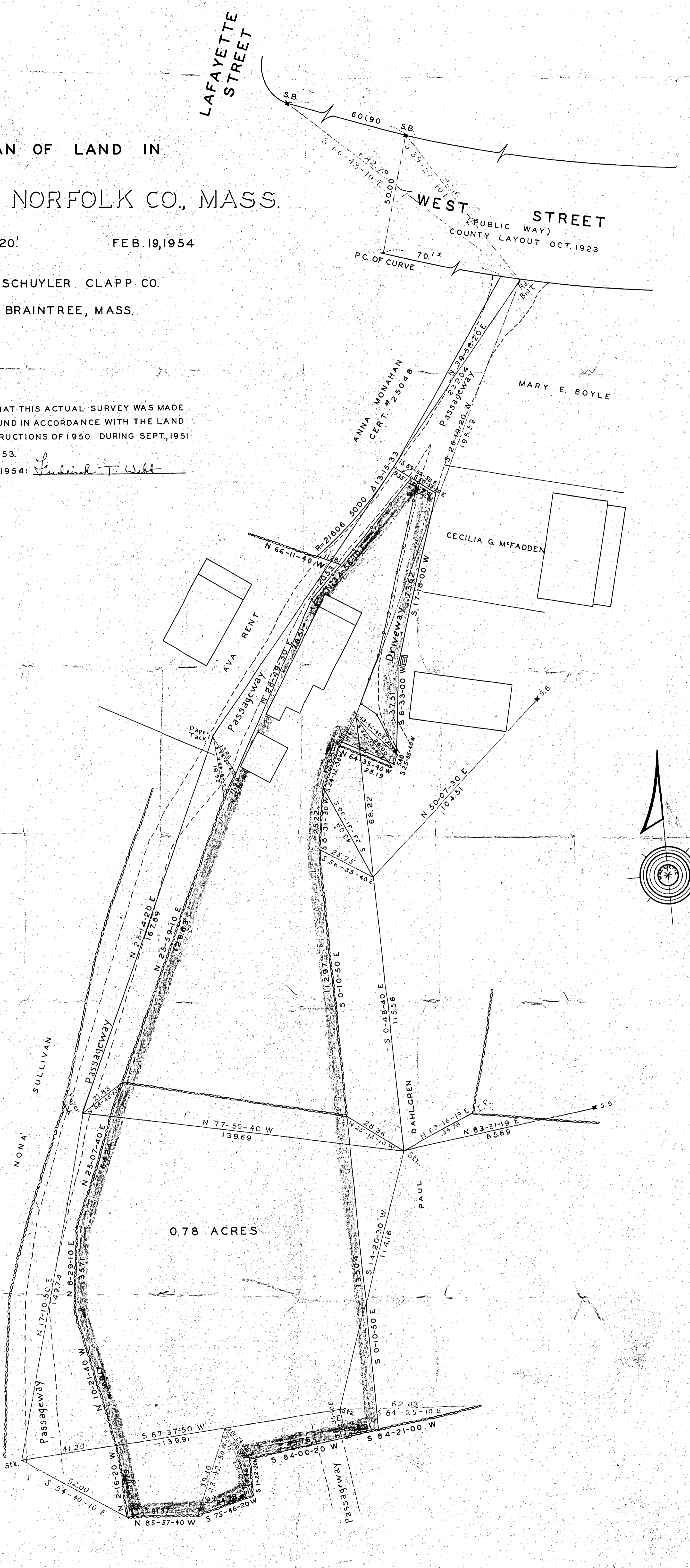
PLAN OF LAND IN  
RANDOLPH, NORFOLK CO., MASS.

SCALE: 1" = 20' FEB. 19, 1954

THE SCHUYLER CLAPP CO.  
BRAINTREE, MASS.

I CERTIFY THAT THIS ACTUAL SURVEY WAS MADE  
ON THE GROUND IN ACCORDANCE WITH THE LAND  
COURT INSTRUCTIONS OF 1950 DURING SEPT., 1951  
AND DEC., 1953.

FEB. 19, 1954: *Fredrick T. Will*



0.78 ACRES

LOUISE DOYLE  
(SPORTSMEN'S CLUB PROPERTY)

MASS. G.L. CHAP. 41 SEC. 81 P  
APPROVAL UNDER THE SUBDIVISION CONTROL  
LAW NOT REQUIRED 1954.

PLANNING BOARD TOWN OF RANDOLPH

JN 5876