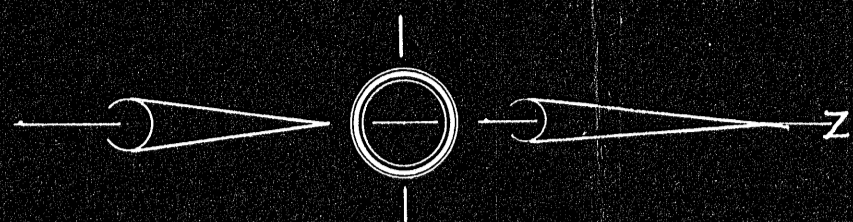


25000A



BOSTON

PROVIDENCE

TURNPIKE

STREET

NEPONSET

### PLAN OF LAND IN NORWOOD, MASS.

Scale: 1 in. = 40 ft  
Norwood Engineering Co.

December 19, 1953  
Arnold E. Schair, C.E.

Note: Approval under the subdivision control law not required.

*James J. Summer*  
*Joseph B. Stosman*  
*Robert E. Schair*  
*Robert T. Sullivan*

Planning Board  
of the  
Town of Norwood

MAY 1954  
4/15/54 RDR

25000

I certify that this actual survey was made on the ground according to the Land Court Instructions of 1950 between Nov. 21, 1953 and Dec. 1, 1953.

Date: January 5, 1954

*Arnold E. Schair*  
245 Walpole St, Norwood, Mass.