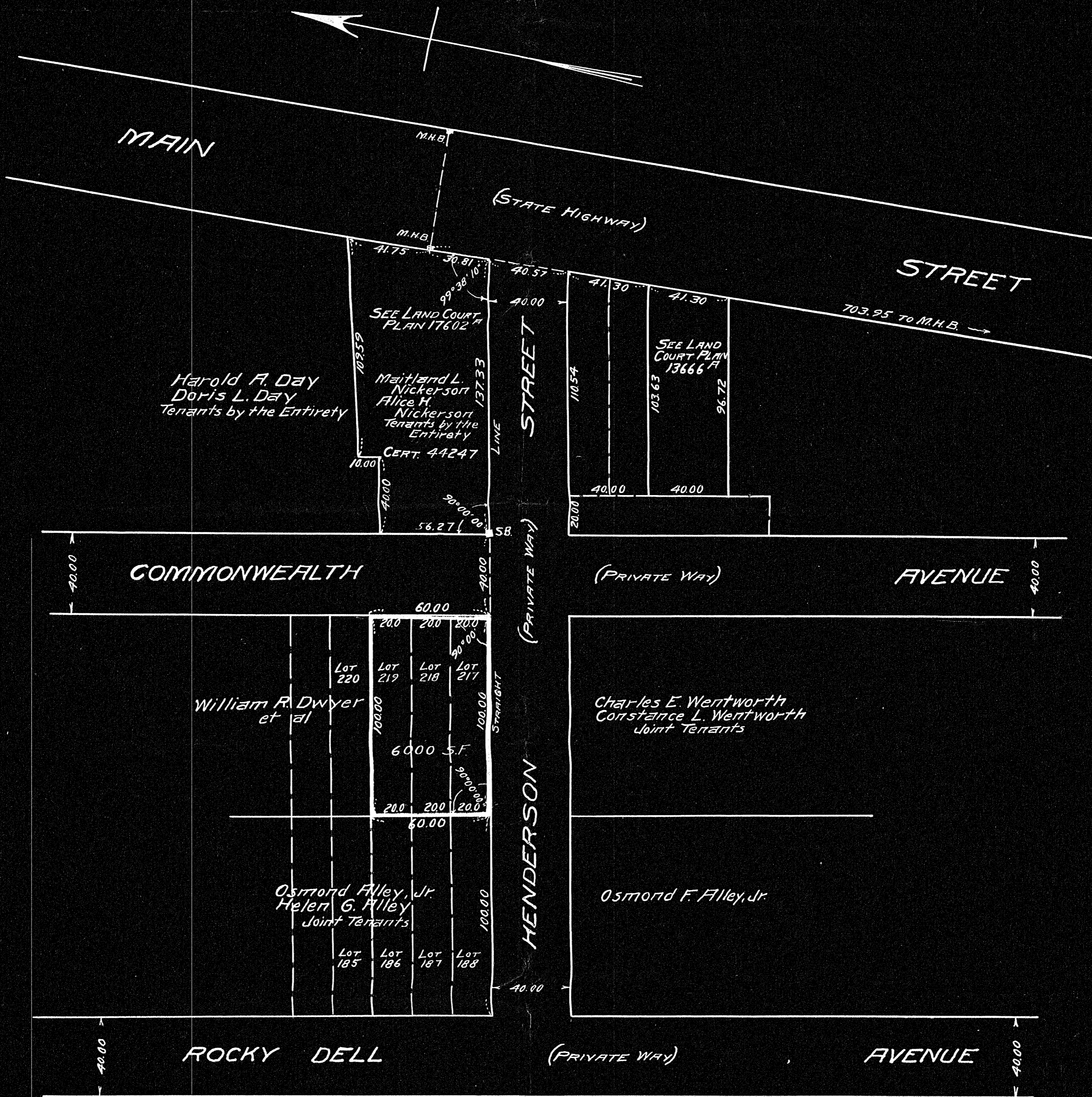


PLAN OF LAND IN
WEYMOUTH, MASS.

SCALE: 1" = 40'

DEC. 14, 1953

RUSSELL H. WHITING, REGISTERED LAND SURVEYOR
NORTH WEYMOUTH, MASS.



SEE PLAN OF "WEYMOUTH PARK"
RECORDED NORFOLK REGISTRY P.B. 19 PL 881

I CERTIFY THAT THIS ACTUAL SURVEY WAS MADE ON THE
GROUND IN DECEMBER 1953 IN ACCORDANCE WITH THE
LAND COURT INSTRUCTIONS OF 1950

DATE: December 14, 1953

Russell H. Whiting,

SURVEYOR