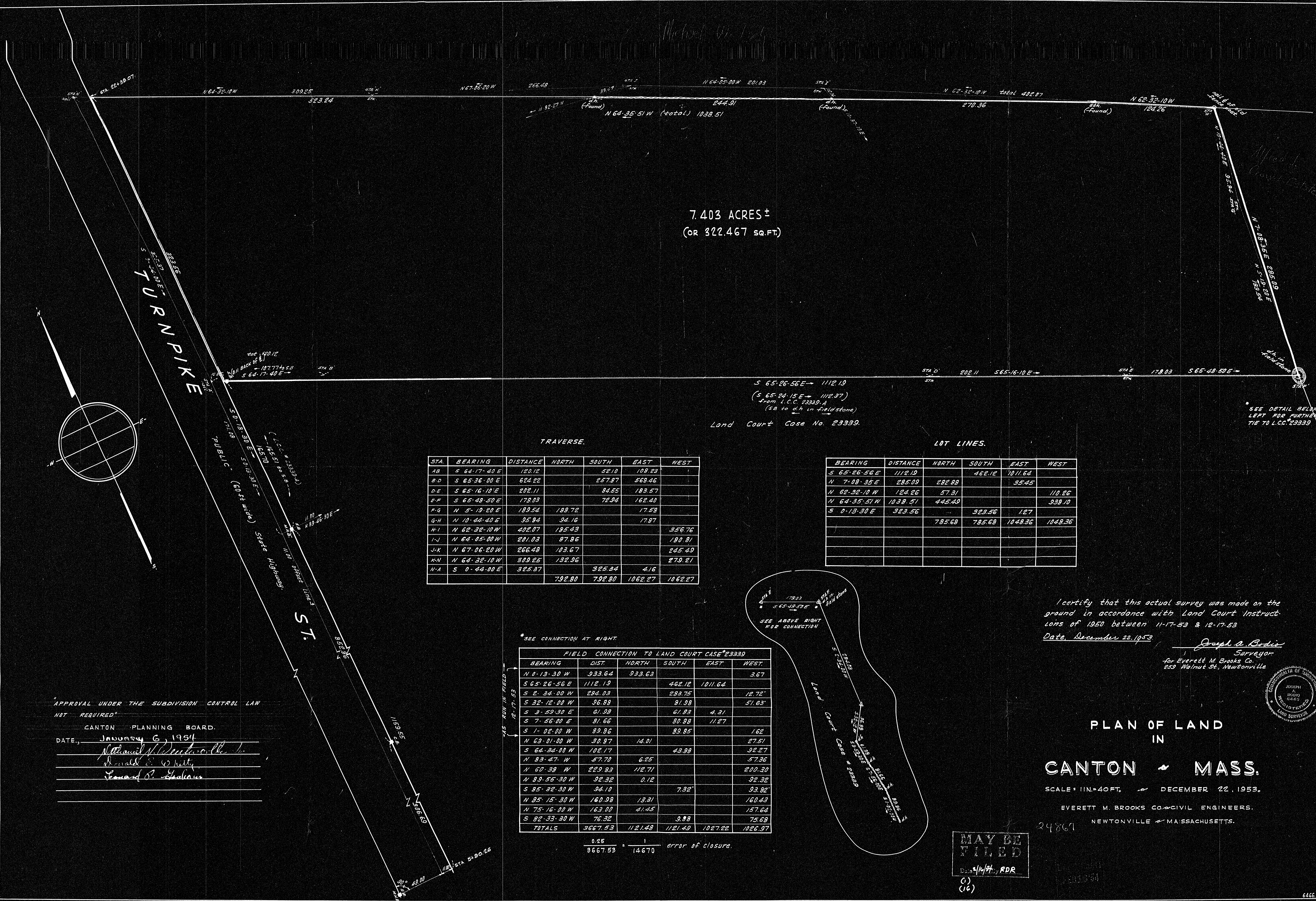


Michael W. Ledy



7.403 ACRES ±
(OR 322,467 SQ. FT.)

S 65-26-56 E → 1112.19
(S 65-24-15 E → 1112.37)
from L.C.C. 23339, A
(SB to dh in fieldstone)
Land Court Case No. 23339.

SEE DETAIL BELOW
LEFT FOR FURTHER
TIE TO L.C.C. 23339

TRAVERSE.

STA.	BEARING	DISTANCE	NORTH	SOUTH	EAST	WEST
AB	S 64-17-40 E	120.12		52.10	109.23	
BC	S 65-36-00 E	624.22		257.97	569.46	
CD	S 65-16-10 E	202.11		84.55	183.57	
DE	S 65-48-50 E	179.03		72.94	162.40	
EF	N 5-10-20 E	189.54	189.72		17.53	
GH	N 10-42-40 E	95.94	94.16		17.87	
HI	N 62-32-10 W	402.07	185.43			356.76
IJ	N 64-05-00 W	201.03	87.86			180.81
JK	N 67-06-20 W	266.48	103.67			245.49
KL	N 64-32-10 W	309.25	132.96			279.21
LA	S 0-44-00 E	325.37		325.34	4.16	
TOTALS			792.80	792.80	1062.27	1062.27

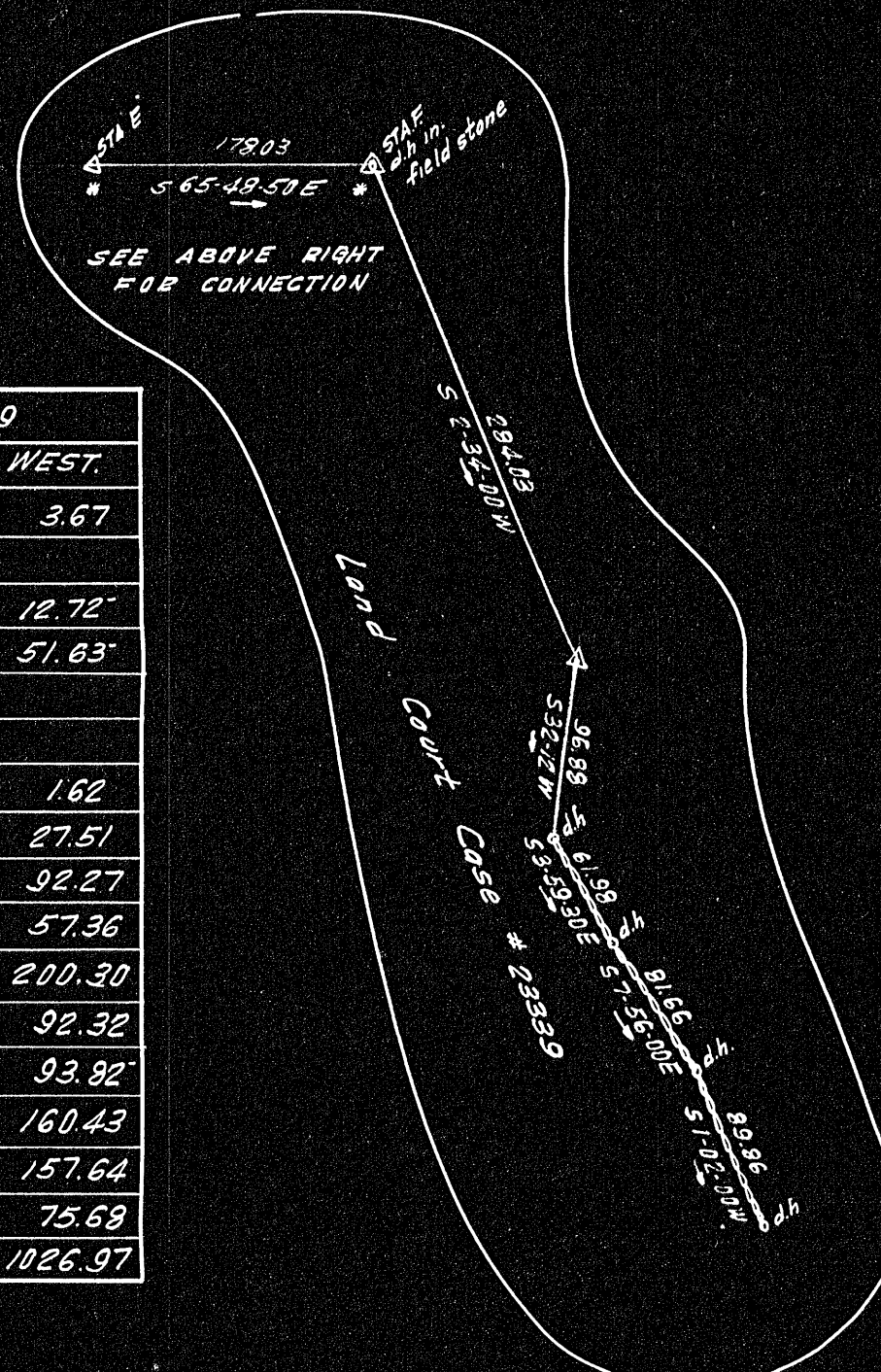
LOT LINES.

BEARING	DISTANCE	NORTH	SOUTH	EAST	WEST
S 65-26-56 E	1112.19		462.12	1011.64	
N 7-08-35 E	285.09	282.89			35.45
N 62-32-10 W	124.26	57.31			110.26
N 64-35-51 W	1039.51	445.49			939.10
S 0-13-30 E	323.56		323.56	1.27	
TOTALS		785.68	785.68	1048.36	1048.36

*SEE CONNECTION AT RIGHT

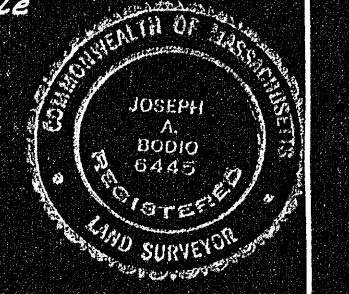
FIELD CONNECTION TO LAND COURT CASE # 23339					
BEARING	DIST.	NORTH	SOUTH	EAST	WEST.
N 0-13-30 W	933.64	933.63			3.67
S 65-26-56 E	1112.19		462.12	1011.64	
S 2-34-00 W	294.03		293.75		12.72
S 32-12-00 W	96.88		91.98		51.83
S 3-59-30 E	61.99		61.83	4.31	
S 7-56-00 E	81.66		80.89	11.27	
S 1-02-00 W	89.86		89.85		1.62
N 63-01-00 W	30.97	14.01			27.51
S 64-34-00 W	102.17		43.89		92.27
N 83-47-10 W	57.70	6.25			57.36
N 60-39-10 W	229.83	112.71			200.30
N 89-55-30 W	92.32	0.12			92.32
S 85-32-30 W	94.10		7.32		93.82
N 85-15-30 W	160.99	13.31			160.43
N 75-16-00 W	163.00	41.45			157.64
S 82-33-30 W	76.32		9.88		75.69
TOTALS	3667.53	1121.48	1121.48	1027.22	1026.97

$\frac{0.25}{3667.53} = \frac{1}{14670}$ error of closure.



I certify that this actual survey was made on the ground in accordance with Land Court Instructions of 1950 between 11-17-53 & 12-17-53
Date, December 22, 1953

Joseph A. Bode
Surveyor
for Everett M. Brooks Co.
259 Walnut St., Newtonville



APPROVAL UNDER THE SUBDIVISION CONTROL LAW NOT REQUIRED

CANTON PLANNING BOARD.
DATE, January 6, 1954
William W. Deaneville
Donald E. Kelly
Thomas P. Graham

PLAN OF LAND IN
CANTON MASS.
SCALE: 1 IN = 40 FT. DECEMBER 22, 1953.

EVERETT M. BROOKS CO. CIVIL ENGINEERS.
NEWTONVILLE MASSACHUSETTS.

MAY BE FILED
Date: 1/10/54, RDR
(1)
(16)