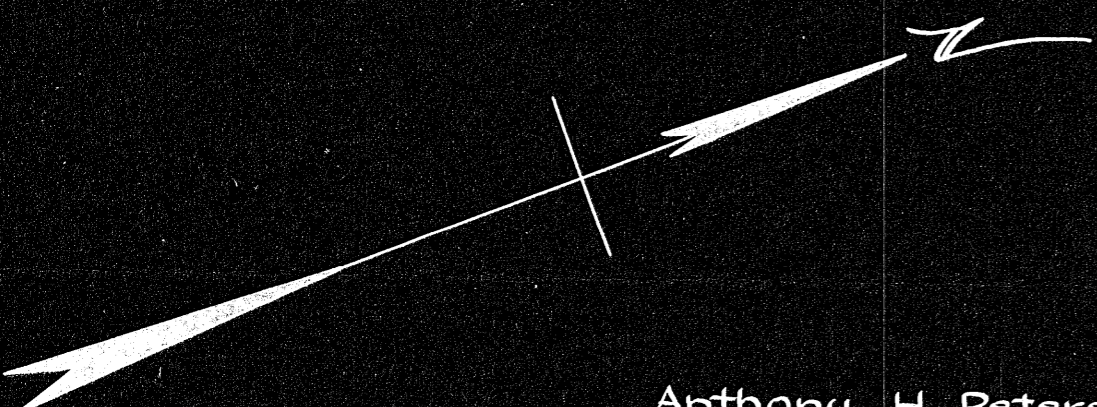
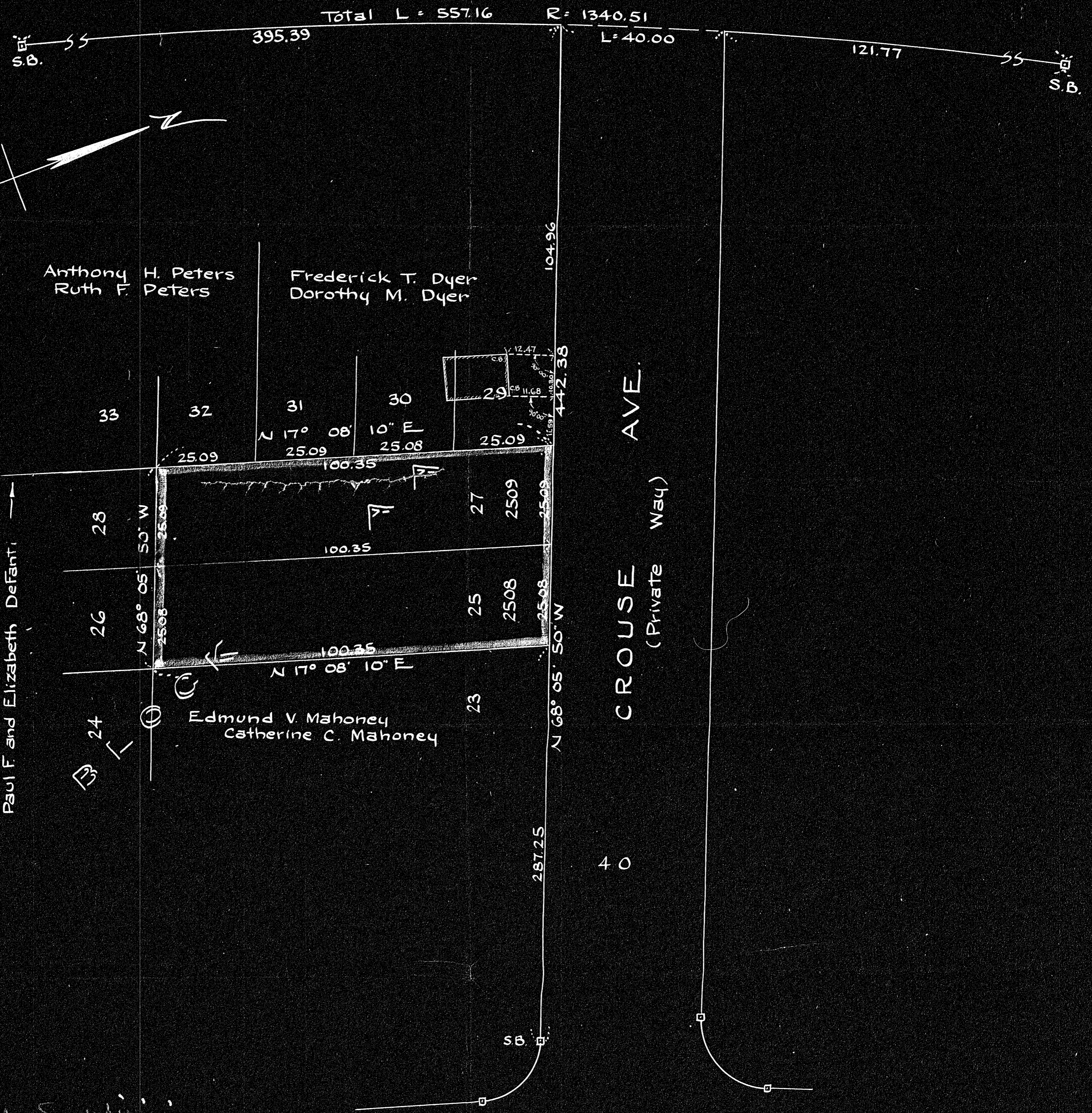


POND ST.
(County Way - Plan dtd April 28, 1931)



*Approved under Subdivision
Control. Plans not required
Westwood Planning Board*

*Alice J. Maxton, Secretary
Sharon F. Mahoney*

January 5, 1954

WILLOW ST.
(Town Way)

Plan of Land in
WESTWOOD, MASS.

Scale: 1 inch = 20 feet

E. W. Pilling
Engineer

December 21, 1953

E. W. Pilling 10/19/50