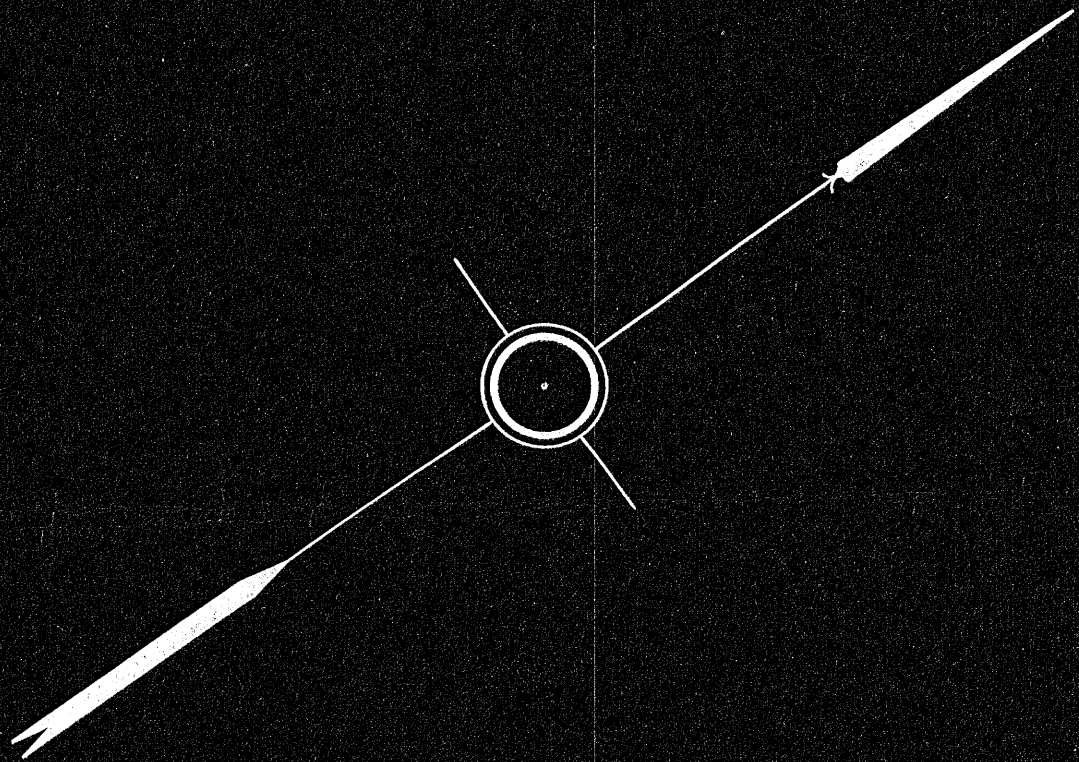


INTERIOR ANGLE	DEF. ANGLE	AZIMUTH	DISTANCE	+SINE	-SINE	+COS.	-COS.
68°-31'-29"	91°-28'-31"	0°-00'-00"	113.00	0.00		113.00	
89°-43'-00"	90°-17'-00"	90°-17'-00"	79.02	79.02			0.39
180°-14'-28"	0°-14'-28"	90°-02'-32"	7.98	7.98			0.01
91°-49'-39"	88°-10'-21"	178°-12'-53"	95.33	2.97			95.28
179°-41'-24"	0°-18'-36"	178°-31'-28"	37.00	0.96			36.98
90°-00'-00"	90°-00'-00"	268°-31'-29"	45.00		44.98		1.16
90°-00'-00"	90°-00'-00"	358°-31'-29"	22.00		0.57	21.99	
270°-00'-00"	90°-00'-00"	268°-31'-29"	45.41				1.17
1080°-00'-00"				90.94	90.94	134.99	134.99



A. G. WILLIAMS

C. KEMLER



We hereby certify that this actual survey was made on the ground in accordance with the Land Court instructions of 1950 on or between July 29 and July 31, 1953
August 5, 1953

Henry F. Bryant & Son, Inc.
Surveyors
Ralph H. Jones

PLAN OF LAND IN BROOKLINE ~ MASS.

Scale of 20 ft. to an inch
Henry F. Bryant & Son, Inc., Engineers
August 5, 1953