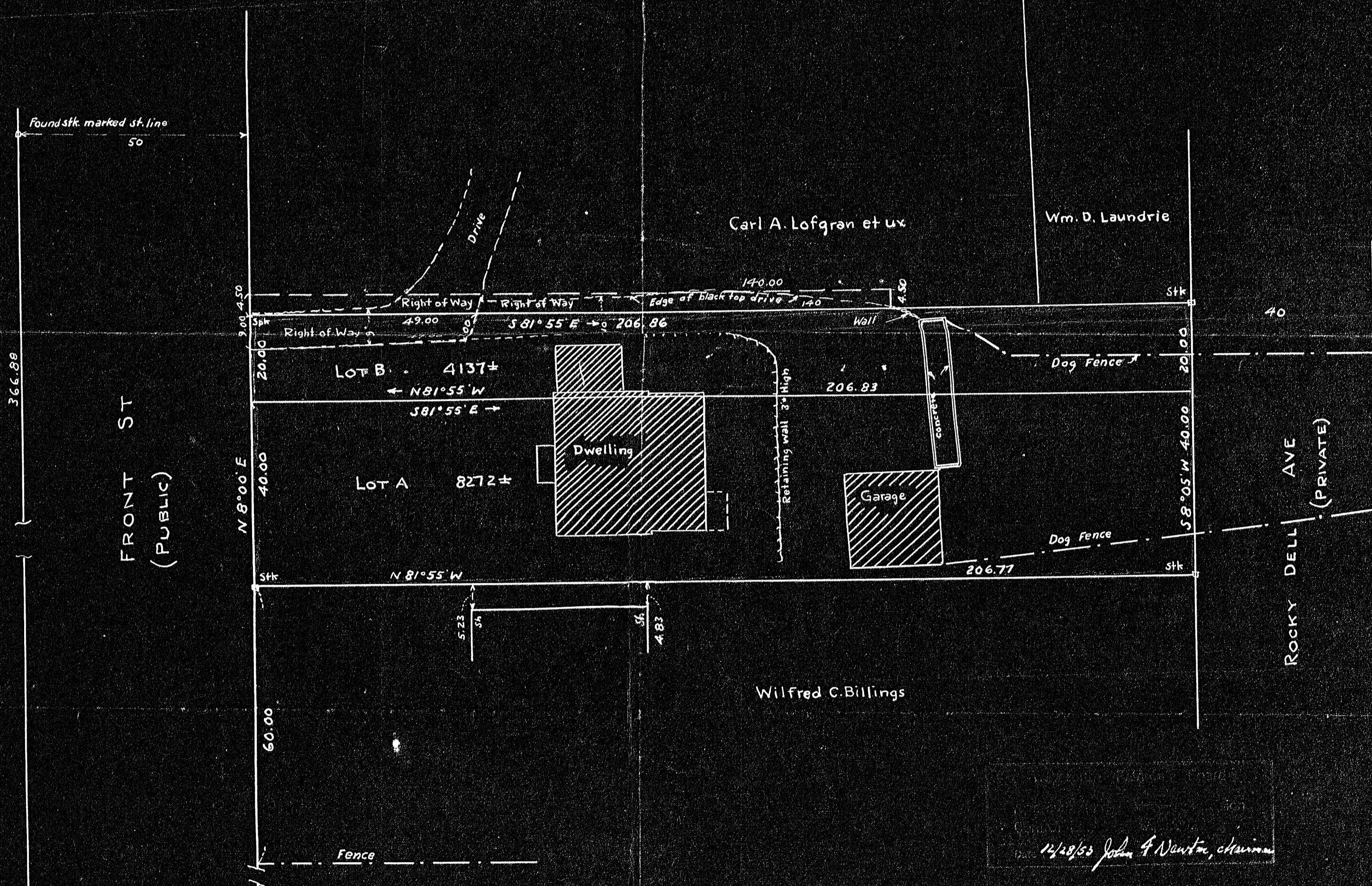


24785A

Bearing	Dist	N	S	E	W
S 81° 55' E	206.86		29.09	204.80	
S 8° 05' W	60.00		59.40		8.44
N 81° 55' W	206.77	29.07			204.71
N 8° 00' E	60.00	59.42		8.35	
		88.49	88.49	213.15	213.15



PLAN OF LAND IN WEYMOUTH  
 SURVEYED FOR  
 WILLIAM J. MC FARLIN JR. ET UX  
 Scale 20 feet to an inch July 23, 1953  
 Hayward & Hayward Surveyors.

12/18/53 John F. Newton, Chairman

MAY BE  
 FILED  
 1-12-54  
 Date By III

We certify that this actual survey was made on the ground in accordance with the Land Court instructions of 1950 on July 2, 1953 Hayward & Hayward Surveyors.  
 Aug. 20, 1953 By Kenneth C. Hayward

HOMESTEAD AVE

24785

24785A