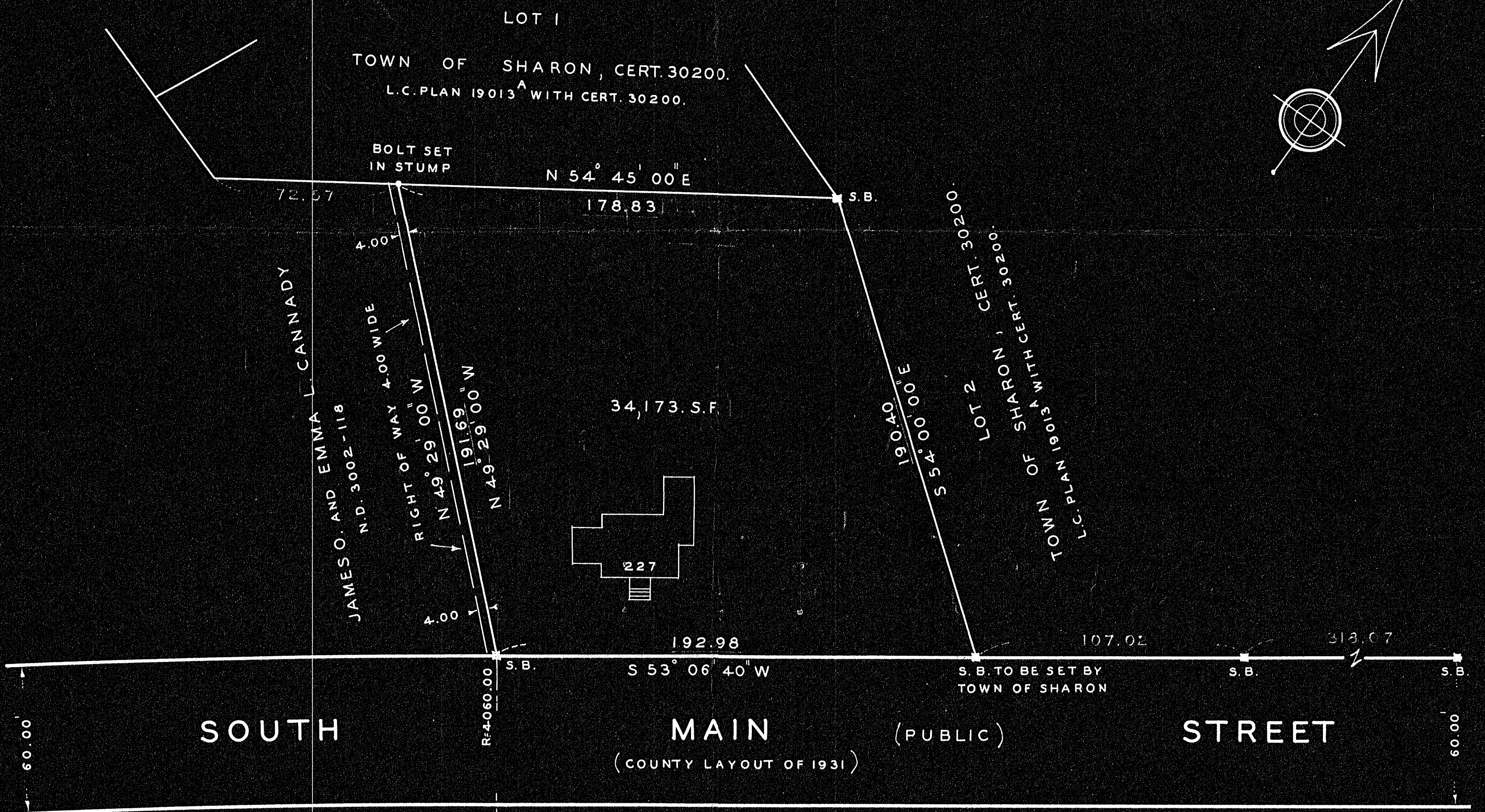


PLAN OF LAND IN  
**SHARON**  
 NORFOLK COUNTY, MASS.

SCALE: 1" = 40'      NOV. 17, 1953

THE SCHUYLER CLAPP CO.  
 BRAintree, MASS.



MAY BE  
 FILED  
 Dec 15/53 By JRP

MASS. G.L. CHAP. 41 SEC. 81P  
 APPROVAL UNDER THE SUBDIVISION CONTROL  
 LAW NOT REQUIRED Res. 2 1953

Roy C. Anderson, Jr.  
 \_\_\_\_\_  
 \_\_\_\_\_  
 \_\_\_\_\_

I CERTIFY THAT THIS ACTUAL SURVEY  
 WAS MADE ON THE GROUND IN ACCORDANCE  
 WITH THE LAND COURT INSTRUCTIONS  
 OF 1950 ON NOVEMBER 13, 1953.

Roy C. Anderson, Jr.

PLANNING BOARD      TOWN OF SHARON

24708

24708A