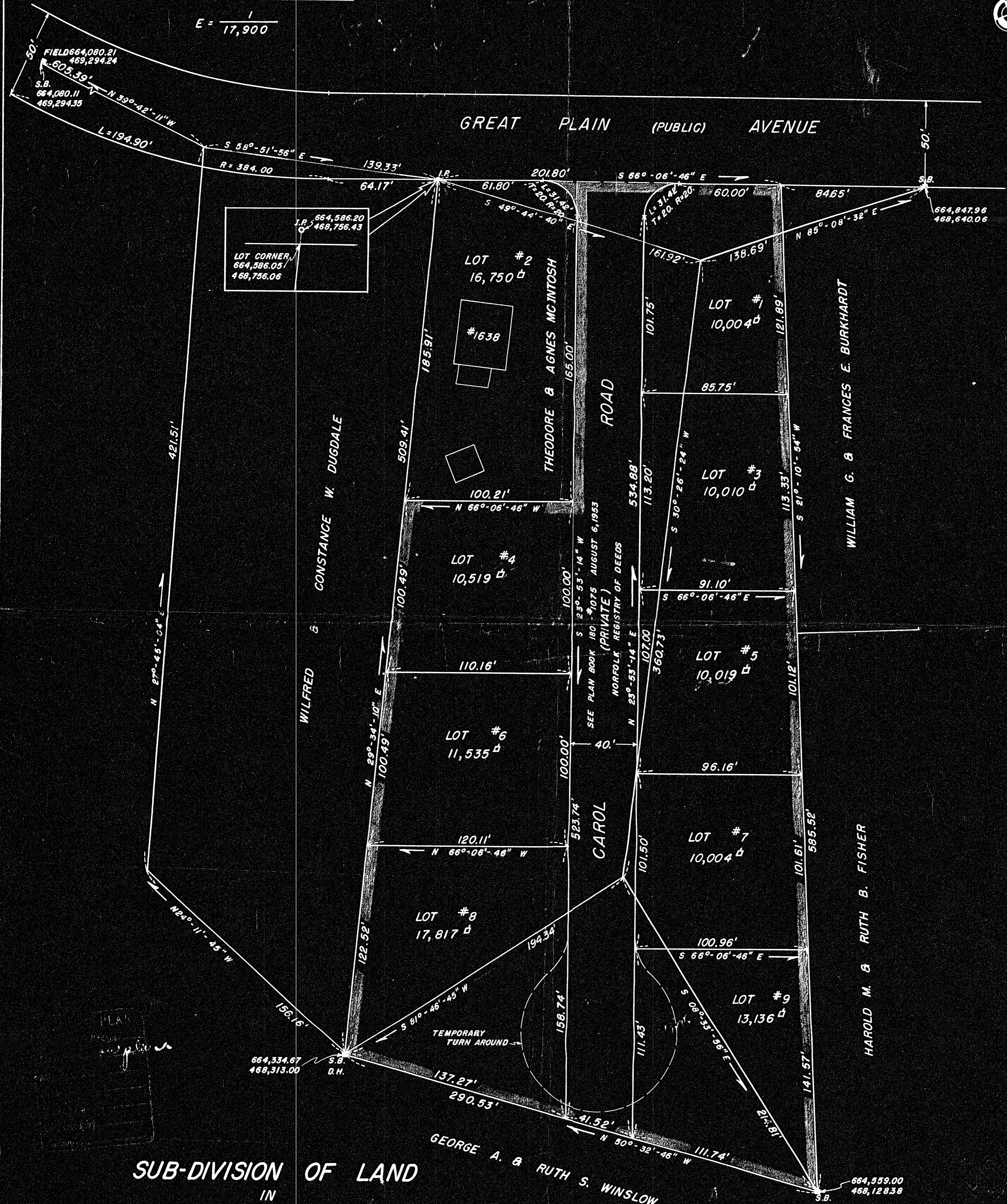
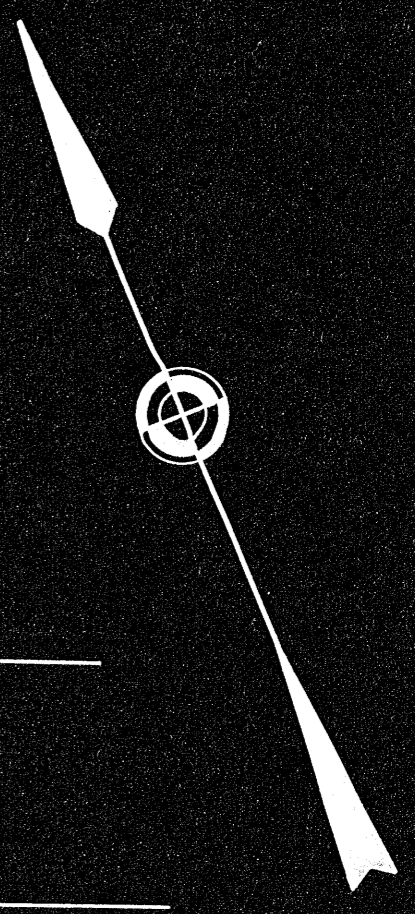


188942

FIELD TRAVERSE					
BEARING	DIST.	E	W	N	S
S 30°-26'-15" W	360.75		182.76		311.03
S 81°-46'-45" W	194.35		192.35		27.79
N 24°-11'-45" W	156.15		64.00	142.43	
N 27°-45'-07" E	421.48	196.26		373.00	
S 58°-51'-45" E	139.33	119.26			72.05
S 49°-44'-30" E	161.92	123.57			104.64
	1433.98	439.09	439.11	515.43	515.51

PROPERTY TRAVERSE					
BEARING	DIST.	E	W	N	S
S 21°-10'-54" W	585.52		211.56		545.96
N 50°-32'-46" W	290.53		224.33	184.62	
N 29°-34'-10" E	323.50	199.63		281.37	
S 66°-06'-46" E	100.21	91.63			40.58
N 23°-53'-14" E	185.00	74.91		169.15	
S 66°-06'-46" E	120.00	109.72			48.60
	1604.76	435.89	435.89	635.14	635.14



**SUB-DIVISION OF LAND**  
IN  
**NEEDHAM, MASS.**

OWNED BY:

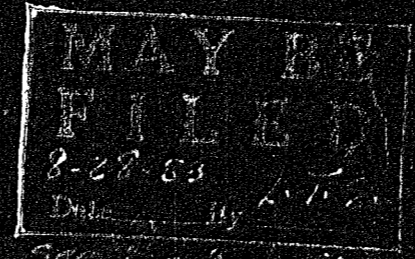
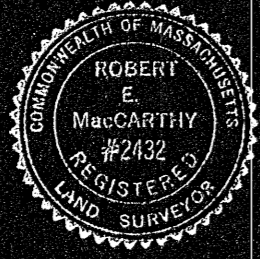
G & S CONSTRUCTION CORP.

SCALE: 1" = 40'

AUGUST 12, 1953

SURVEY BY:

MAG CARTHY ENGINEERING SERVICE, INC.,  
NATICK, MASS.



NOTE:  
I CERTIFY THAT THIS SURVEY WAS MADE  
IN ACCORDANCE WITH LAND COURT INSTRUCTIONS  
OF 1950.

8/17/53  
DATE  
Robert Veeo  
20 WASHINGTON ST.

4528A