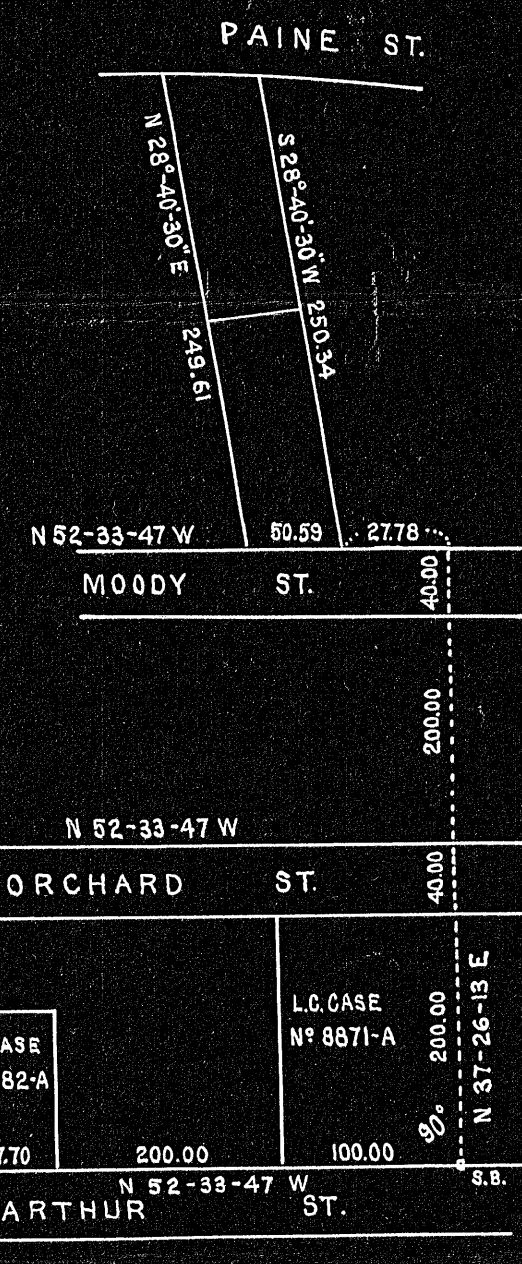
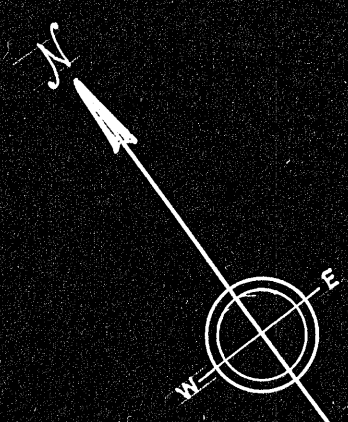
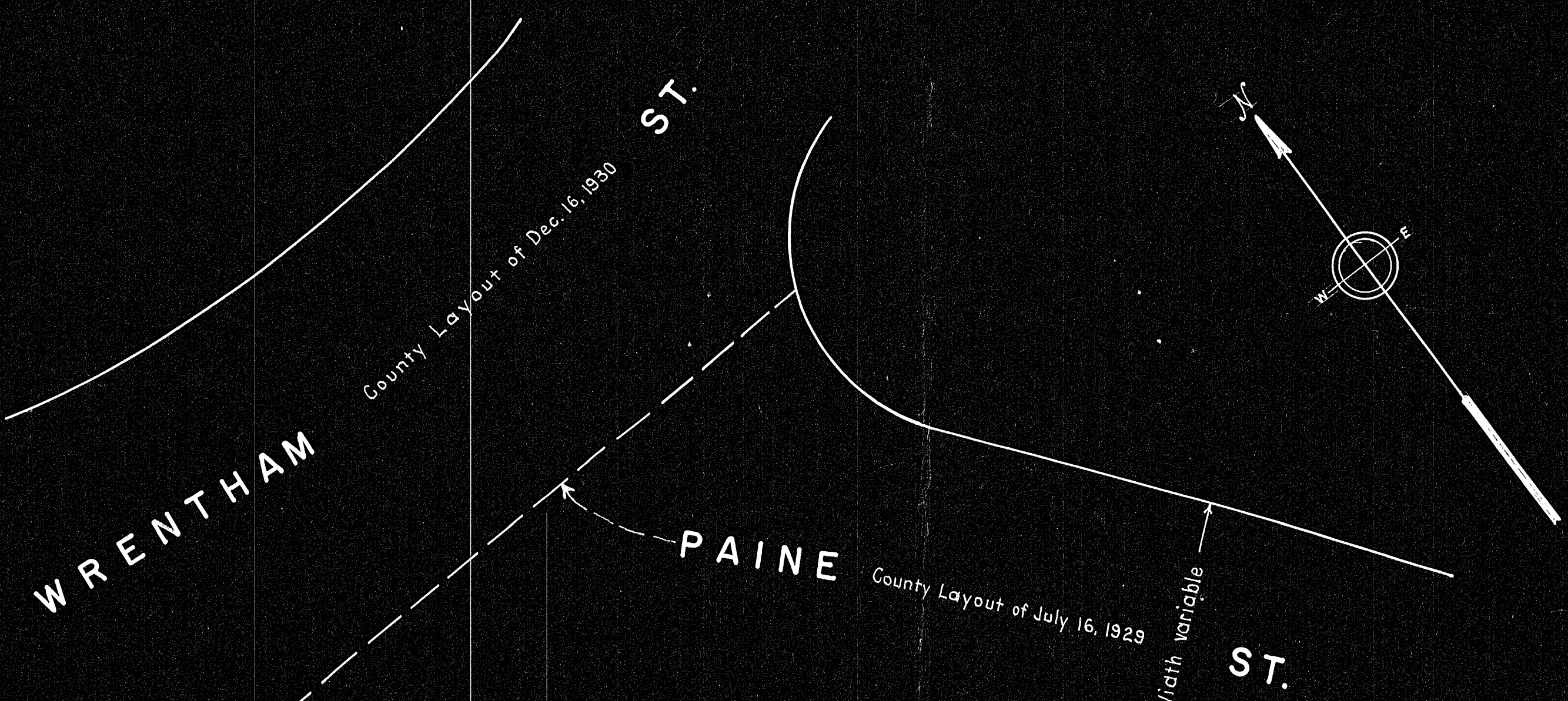


24337A



RECORD PLAN
 Transferred to
 415
 Drawn by
 Each by
 Inspected by

FILED
 5-25-52
 1952

Plans brought up to date

I certify that this plan was made from an actual survey on the ground, in accordance with the Land Court Requirements of 1950.

Kenneth E. McIntyre

24337
 FILED

MOODY PUBLIC WAY ST. 40'

PLAN OF LAND
 IN
 BELLINGHAM, MASSACHUSETTS

SCALE 1"=20' NOV. 20, 1952

Kenneth E. McIntyre Walpole, Mass.
 Reg. Civil Engineer & Reg. Land Surveyor

24337A