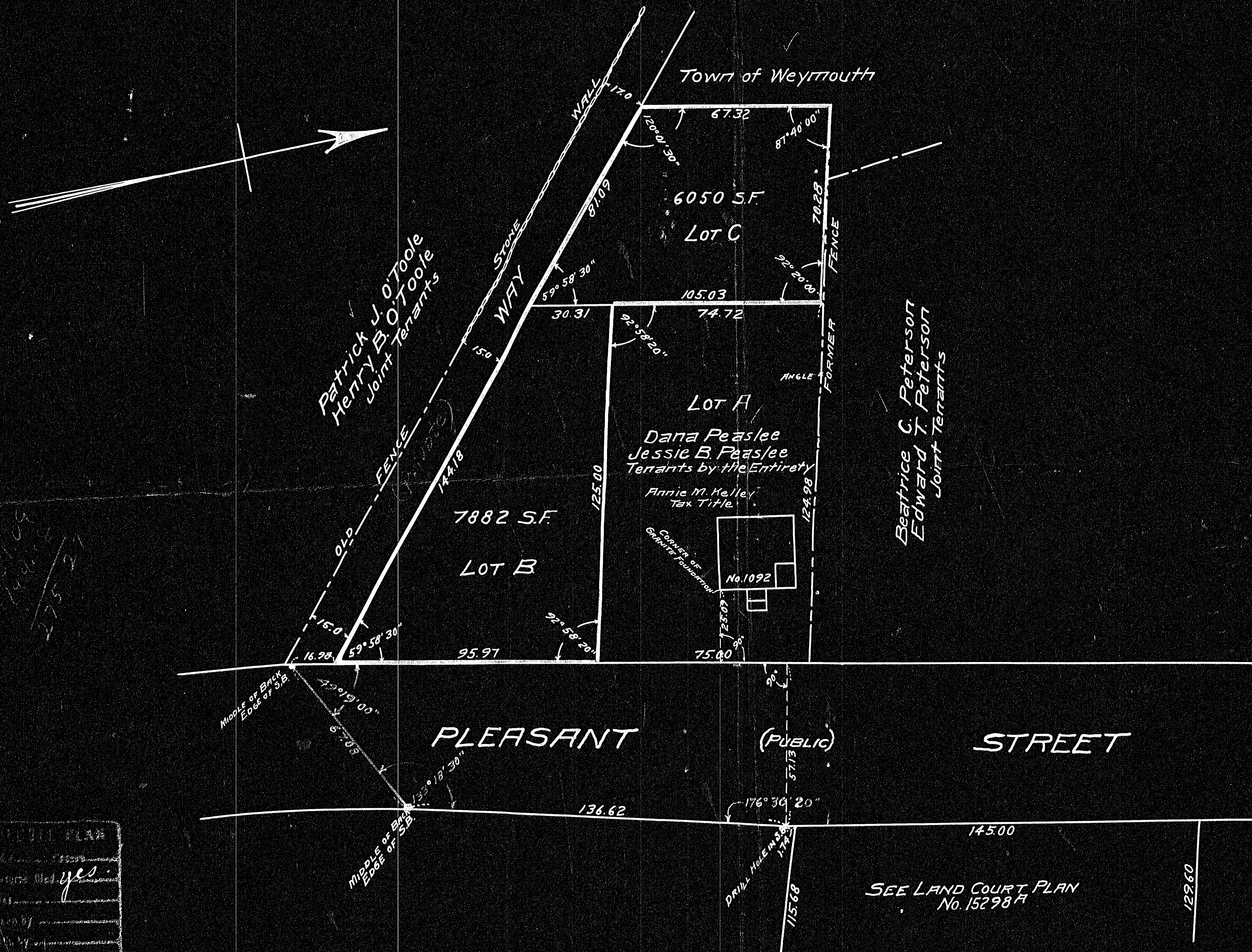


PLAN OF LAND IN WEYMOUTH, MASS.

SCALE: 1" = 30' MAY 14, 1953

RUSSELL H. WHITING, REGISTERED LAND SURVEYOR
NORTH WEYMOUTH, MASS.



PLAN
yes

MAY BE FILED
6-20-53 L.R.S.
24325
PL27

I CERTIFY THAT THIS ACTUAL SURVEY WAS MADE ON THE GROUND
IN MAY 1953 IN ACCORDANCE WITH THE LAND COURT INSTRUCTIONS OF 1950
DATE: May 14, 1953
Russell H. Whiting, SURVEYOR

Private Map established
before Planning Board
has established. Plan
Registered Book 124 p 201
Date 6-20-53

24325A

24325A