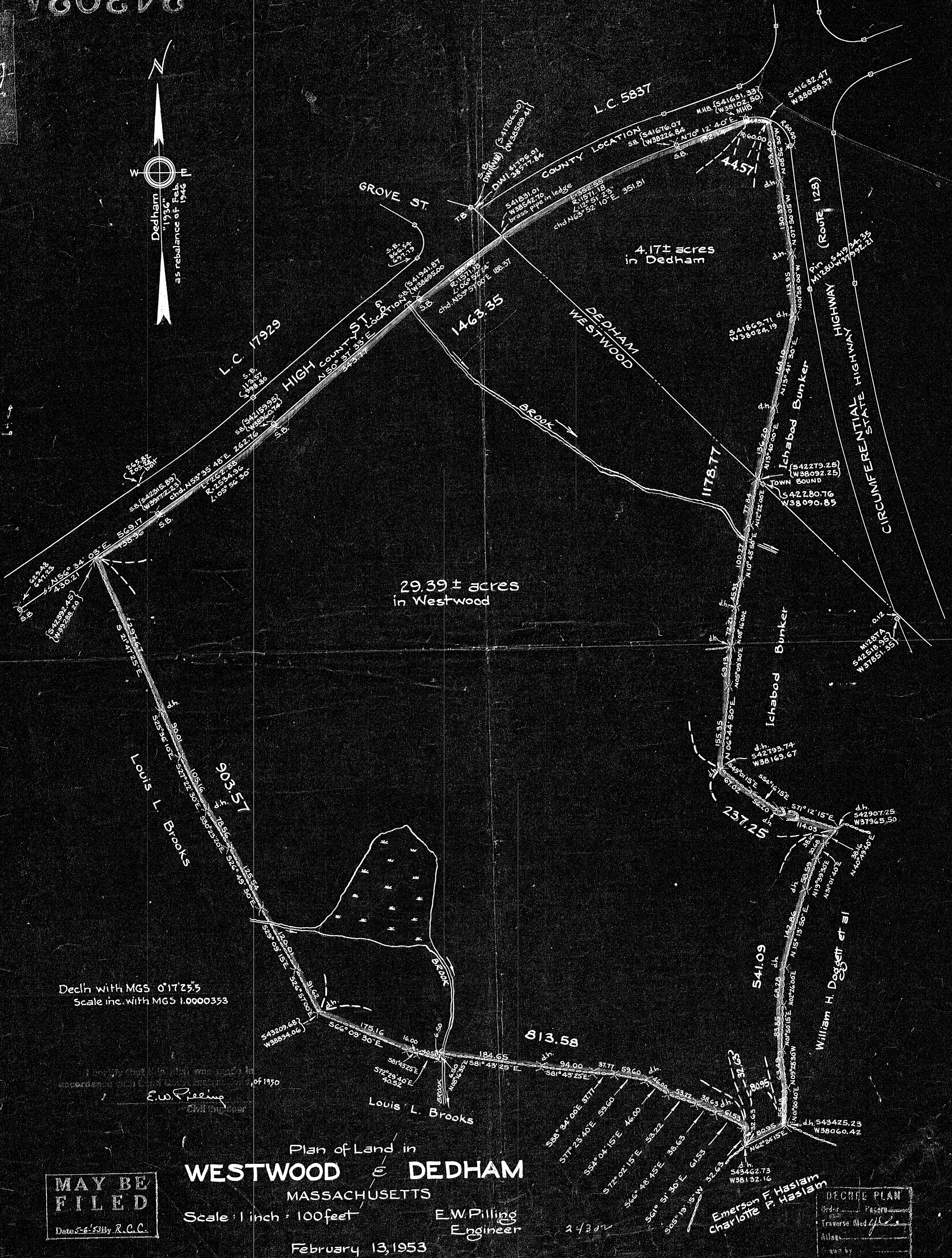
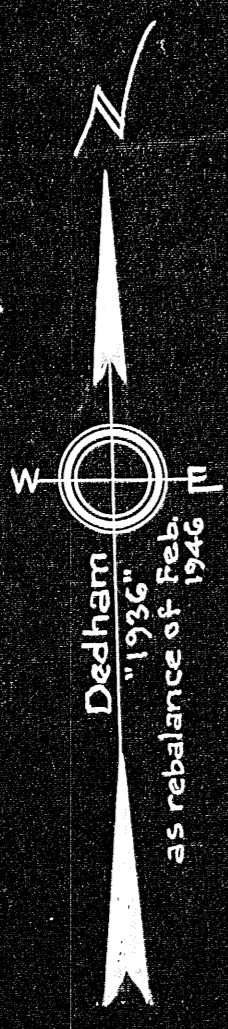


24302A



Decln with MGS 0°17'25.5  
Scale inc. with MGS 1.0000353

E.W. Pilling  
Civil Engineer

Plan of Land in  
**WESTWOOD & DEDHAM**  
MASSACHUSETTS  
Scale: 1 inch = 100 feet  
E.W. Pilling  
Engineer  
February 13, 1953

**MAY BE FILED**  
Date 5-6-53 by R.C.C.

DEED PLAN  
Order of Mapers  
Traverse filed  
Attest  
Filed by  
Witnessed by

24302A