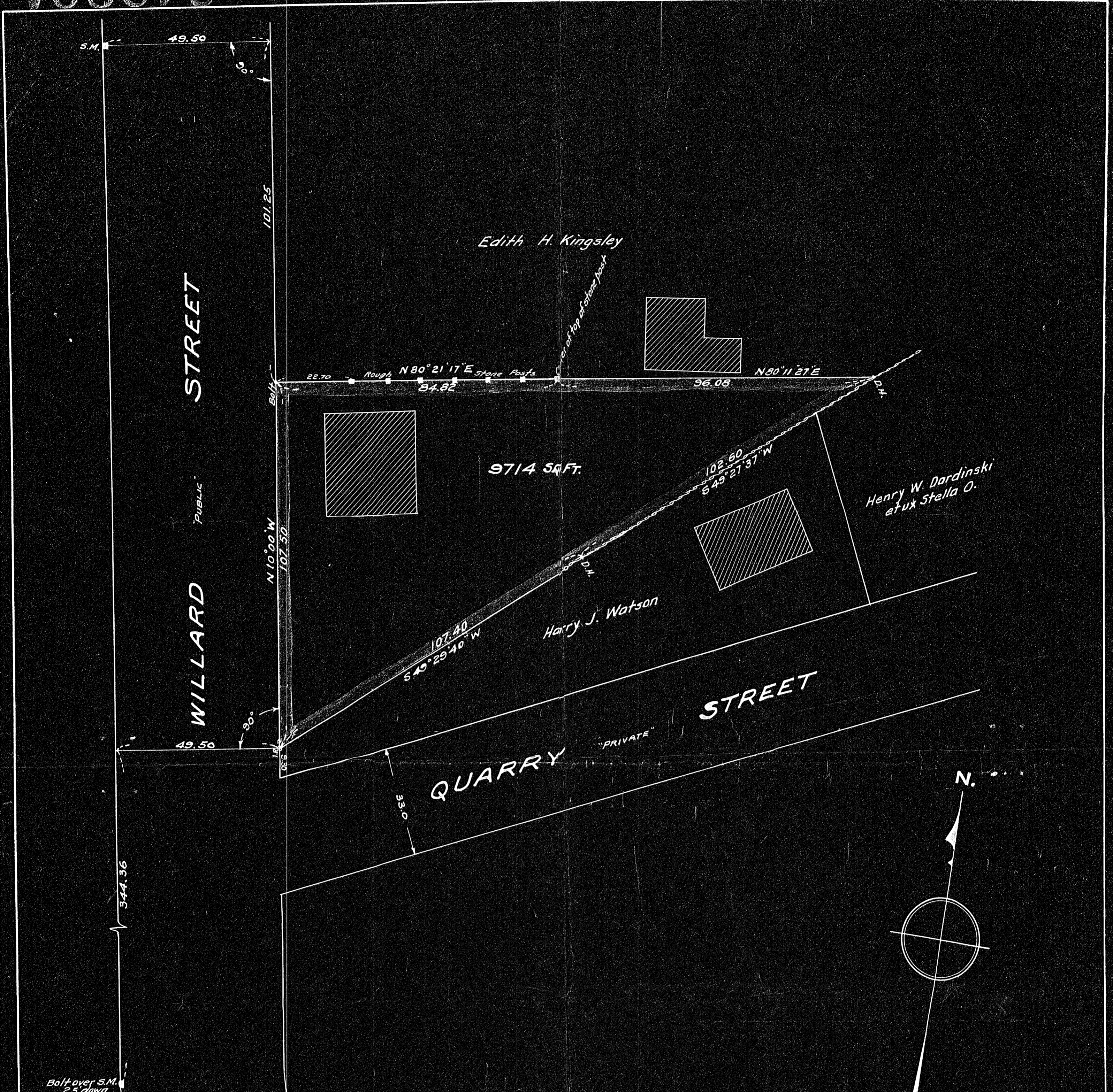


24289A



Plan of Land in Quincy
 Scale 20 feet to an inch
 October 31, 1952
 Ernest W. Branch Inc. Civil Engineers
 11 Adams Building, Quincy

I certify that this actual survey was made on
 the ground in accordance with Land Court
 instructions of 1950, on October 23, 1952
 October 31, 1952 George H. Kuerst, Engineer

MAY BE
 FILED
 Date 7/4/52 By G.B.N.

DEED PLAN
 Order
 Traverse filed *as plan*
 Atlas
 Drawn by
 Made by
 Checked by

24289

BEARING	DIST.	SINE	COSINE	N	S	E	W
$N 10^{\circ} 20' W$	107.50	1736432	9848678	105.67			18.67
$N 80^{\circ} 21' 17'' E$	84.82	9859840	1675478	14.21		83.62	
$N 80^{\circ} 11' 27'' E$	96.03	9853806	1703871	16.37		94.68	
$S 49^{\circ} 27' 37'' W$	102.60	7593555	6499751		66.69		77.97
$S 45^{\circ} 29' 40'' W$	107.40	7603430	6495218		69.78		81.66
				136.45	136.45	178.30	178.30

24289A