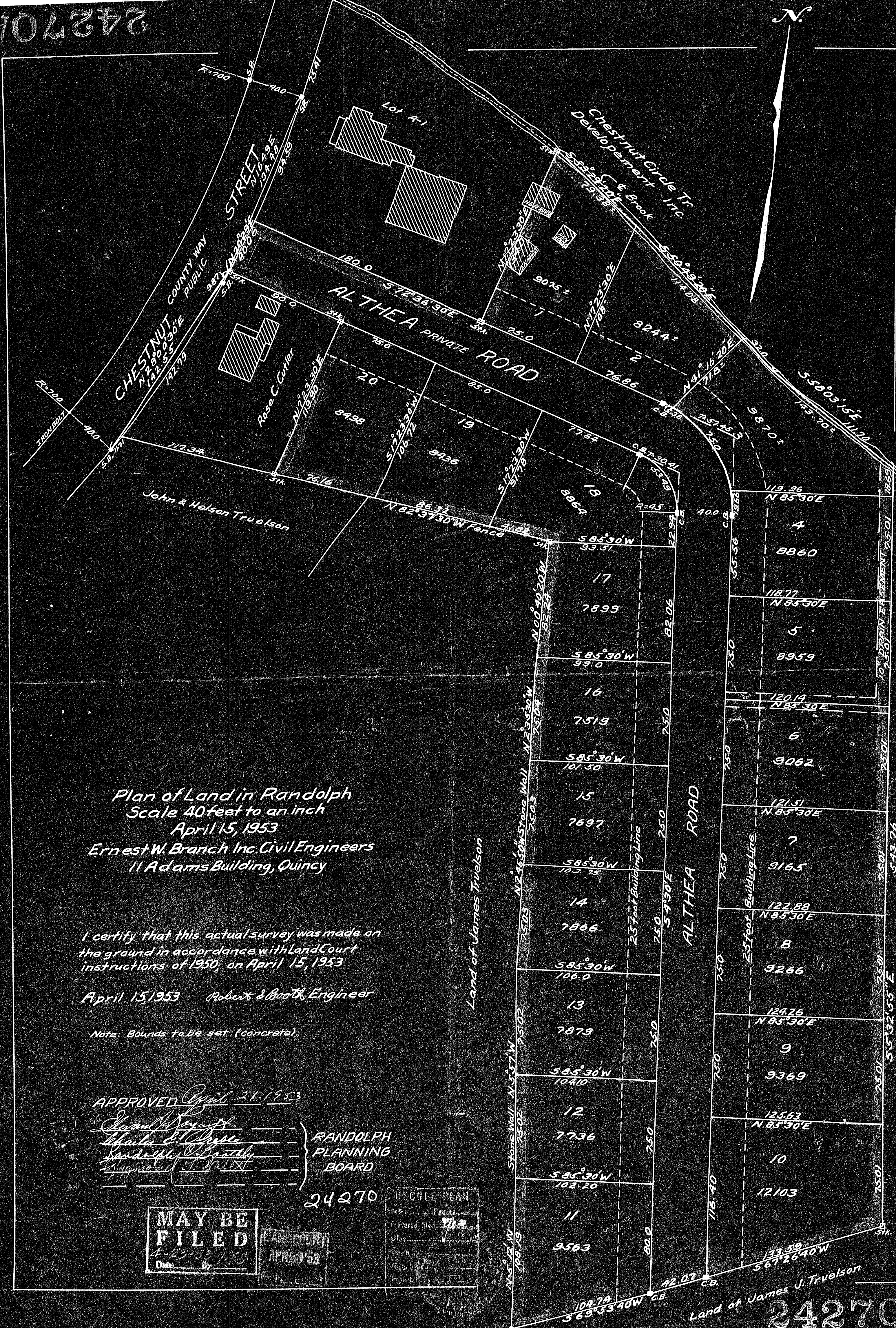


24270A

N



Plan of Land in Randolph
Scale 40 feet to an inch
April 15, 1953
Ernest W. Branch Inc. Civil Engineers
11 Adams Building, Quincy

I certify that this actual survey was made on
the ground in accordance with Land Court
instructions of 1950, on April 15, 1953

April 15, 1953 Robert & Booth Engineer

Note: Bounds to be set (concrete)

APPROVED April 21, 1953

[Signatures]
RANDOLPH
PLANNING
BOARD

MAY BE
FILED
4-23-53
Date By

24270

DEED PLAN
Book Page
Recorded Filed
Date

Land of James J. Truelson

24270A