

M

24244A

PLAN OF LAND IN BELLINGHAM

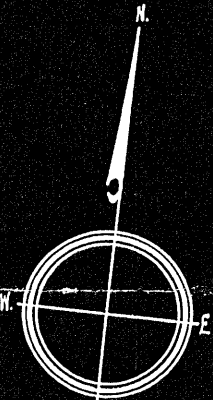
G. Bertrand Bibault, Surveyor

December 1952  
June 21, 1954

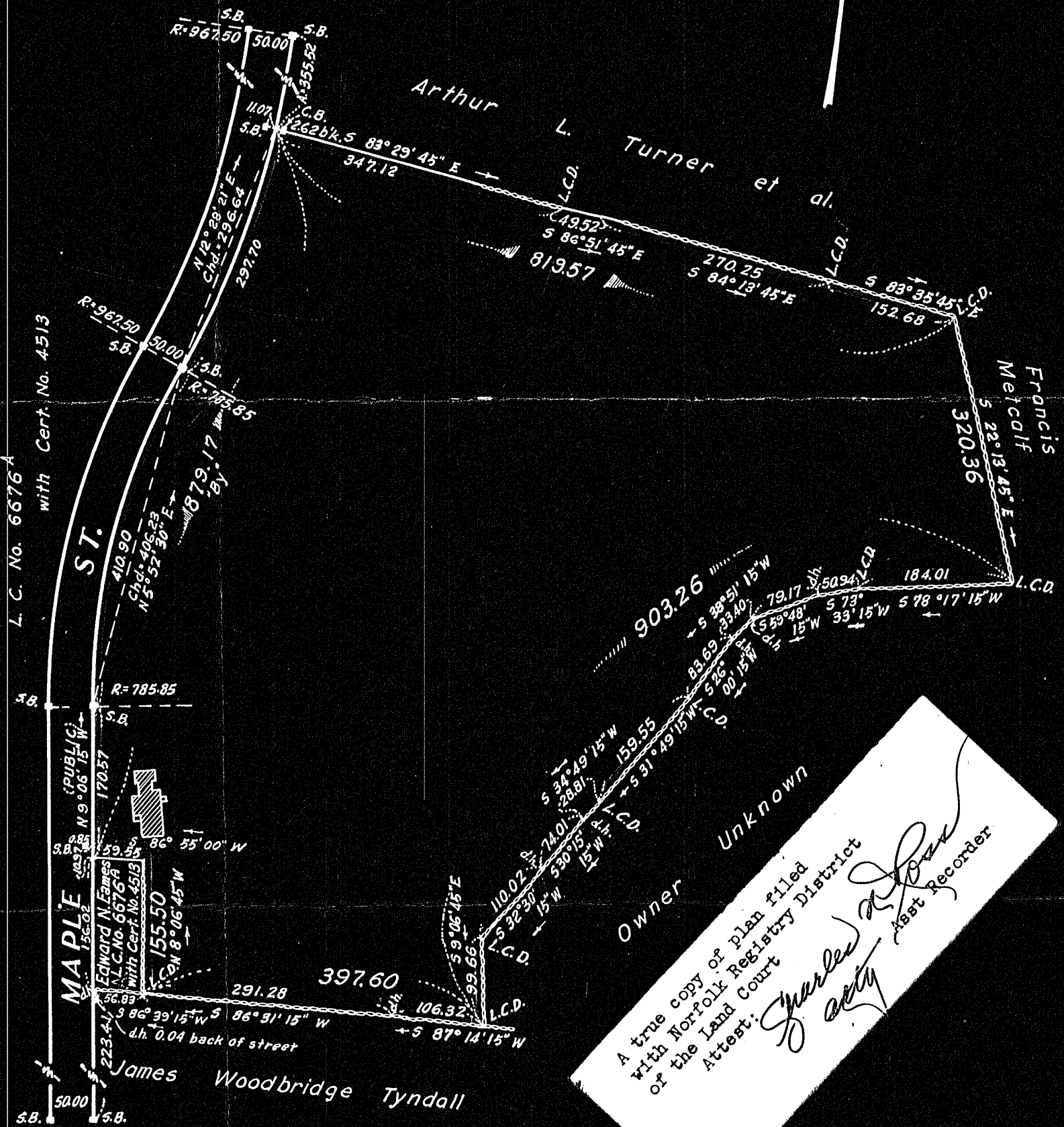
Norfolk County Registry District

MAR 23 1955

RECEIVED FOR REGISTRATION  
2 O'CLOCK J m P M  
NOTED ON CERTIFICATE NO. 58159  
IN REGISTRATION BOOK 266 PAGE 159



DEC 24 1954



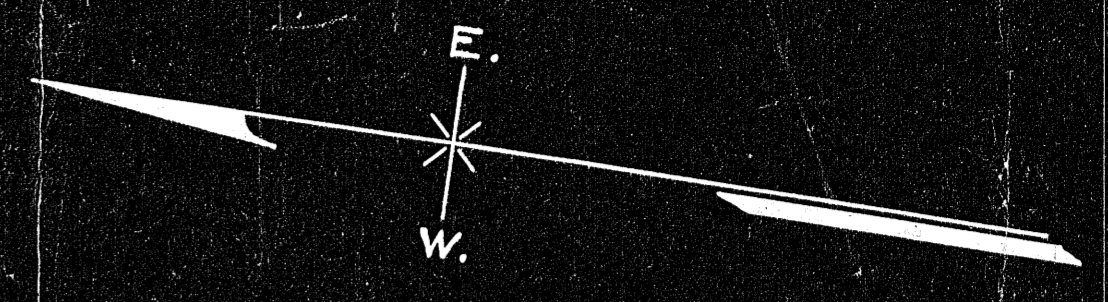
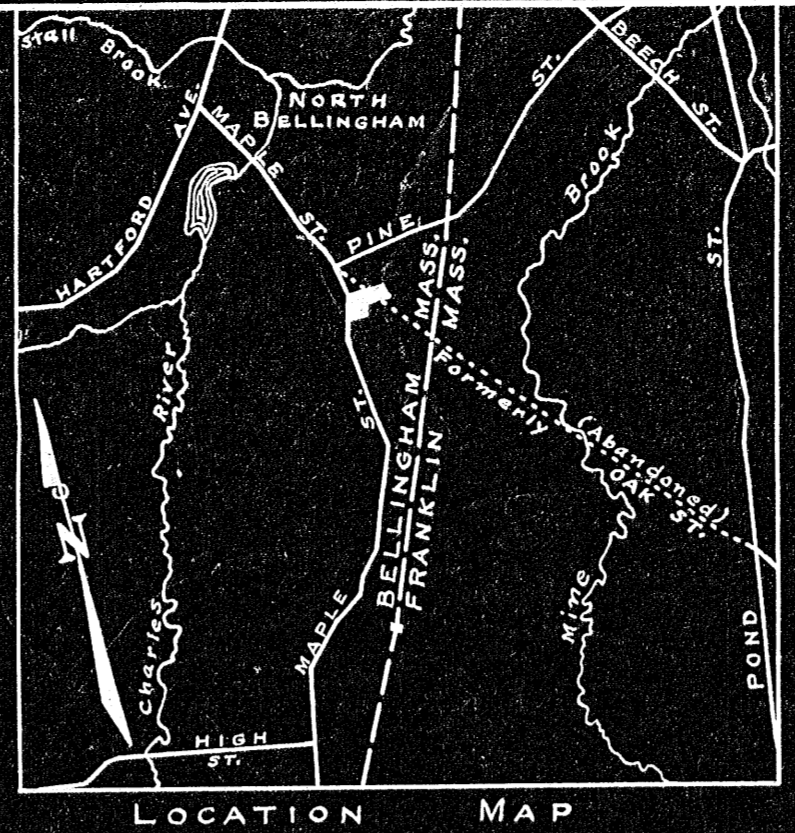
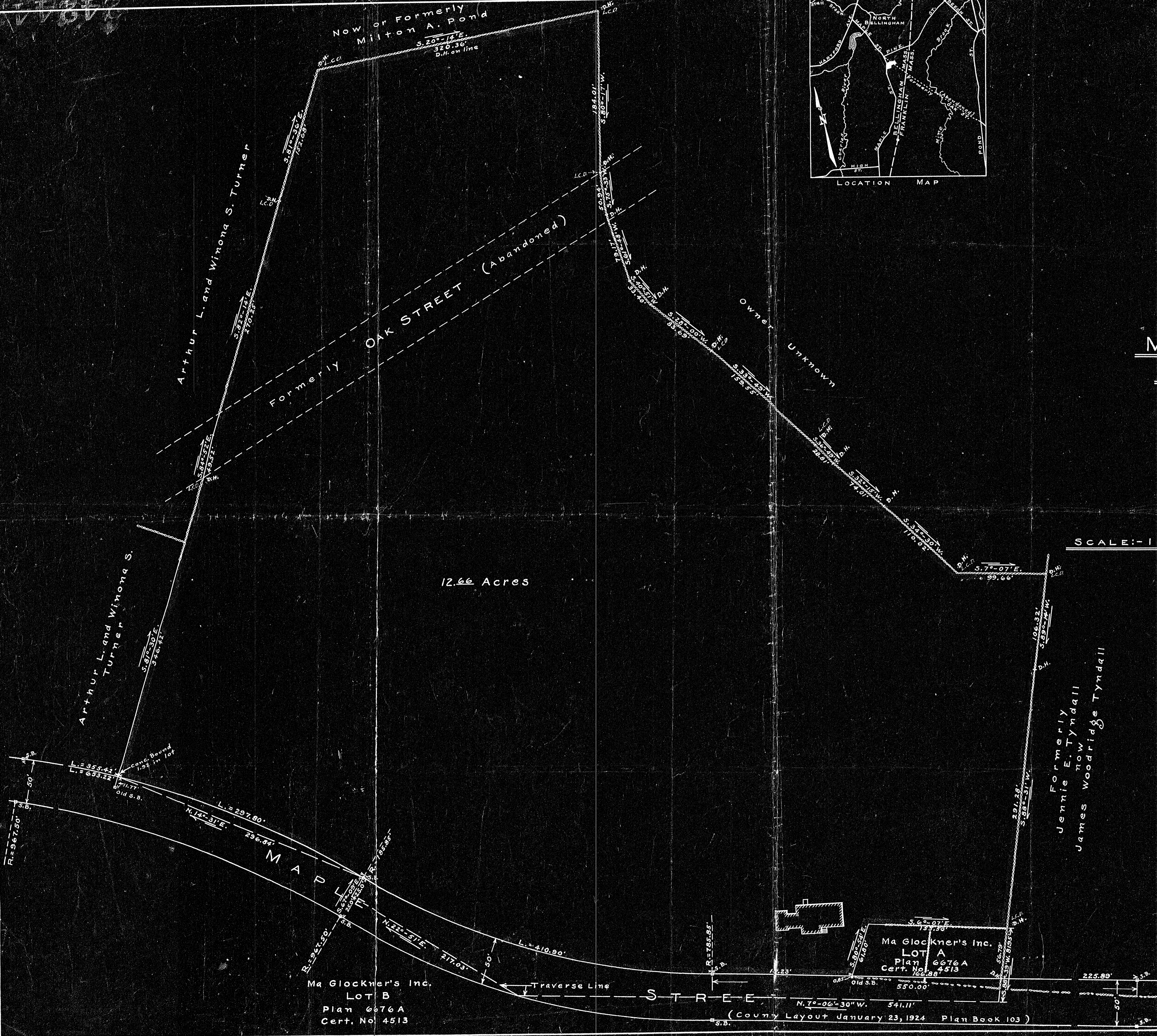
Owner Unknown  
A true copy of plan filed  
with Norfolk Registry District  
of the Land Court  
Attest: *Charles A. [Signature]*  
Asst. Recorder

Note:  
Closure  
Lat = 0.16  
Dep = 0.14

Copy of part of plan  
filed in  
LAND REGISTRATION OFFICE  
APRIL 9, 1953  
Scale of this plan 150 feet to an inch  
C. M. Anderson, Engineer for Court, Jr.

More data on file

JRB.



PROPERTY OF  
**MARIE GLOCKNER**  
 BELLINGHAM, MASS.  
 DECEMBER, 1952

SCALE: - 1 INCH EQUALS 50 FEET

12.66 Acres

*Additions in orange as per print filed 6-16-50. M.B.*

I certify that this actual survey was made on the ground in accordance with the Land Court Instructions of 1950 on or between November 18, 1952 and December 22, 1952  
 Date, December 29, 1952

*S. Boston Bibeault*  
 Surveyor,  
 Woonsocket, R.I.

Arthur L. and Winona S. Turner  
 L. = 355.42  
 L. = 269.22  
 R. = 567.80  
 S.B.

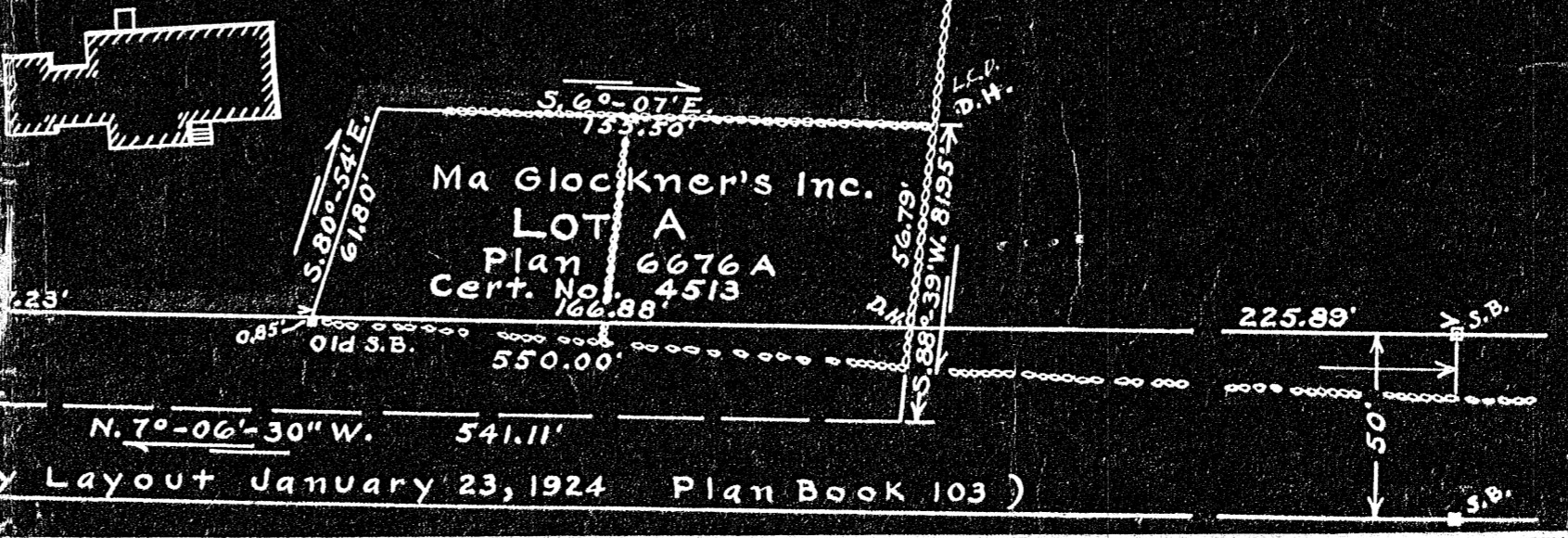
Ma Glockner's Inc.  
 LOT B  
 Plan 6676A  
 Cert. No. 4513

Traverse Line

STREET

N. 7°-06'-30" W. 541.11'

(County Layout January 23, 1924 Plan Book 103)



Formerly  
 Jennie E. Tyndall  
 now  
 James Woodridge Tyndall

MAY BE FILED

24244  
 Conf. PL-40