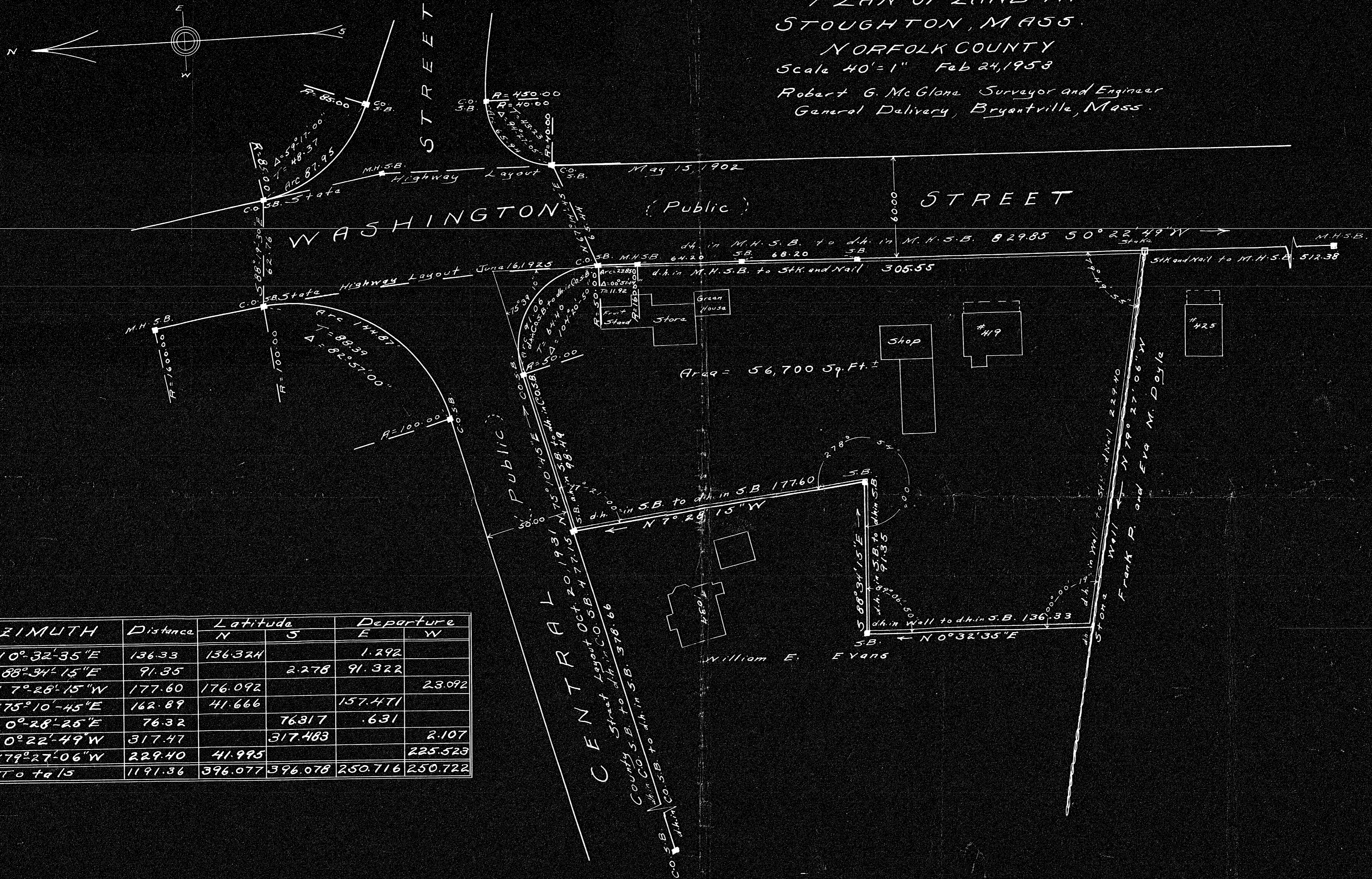


PLAN OF LAND IN
STOUGHTON, MASS.

NORFOLK COUNTY
Scale 40' = 1" Feb 24, 1953

Robert G. McGlone Surveyor and Engineer
General Delivery, Bryantville, Mass.



AZIMUTH	Distance	Latitude		Departure	
		N	S	E	W
N 0° 32' 35" E	136.33	136.324		1.292	
S 88° 34' 15" E	91.35		2.278	91.322	
N 7° 28' 15" W	177.60	176.092			23.092
N 75° 10' 45" E	162.89	41.666		157.471	
S 0° 28' 25" E	76.32		76.317	.631	
S 0° 22' 49" W	317.47		317.463		2.107
N 79° 27' 06" W	229.40	41.995			225.523
To Totals	1191.36	396.077	396.078	250.716	250.722

MAY BE
FILED
Date 3-1-53 By R. G. C.

I Certify that this Actual Survey
was Made on the Ground in Accordance
with the Land Court Instructions
of 1950
Robert D. McGlone Surveyor