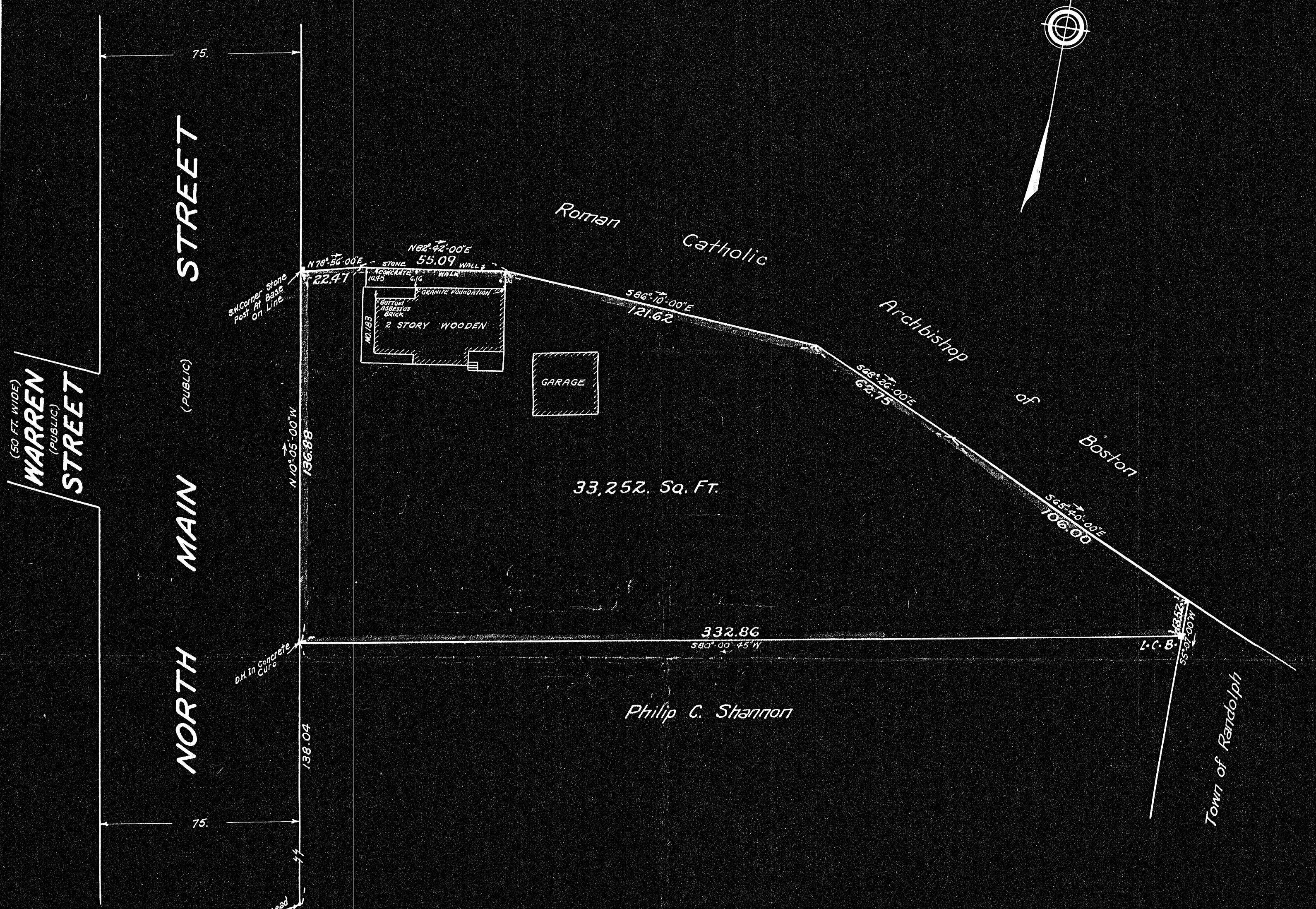


24024



INTERIOR ANGLE	DEFLECTION ANGLE	BEARING	DISTANCE	LATITUDE		DEPARTURE	
				NORTH	SOUTH	EAST	WEST
90-05-45	89-54-15	N10-05-00W	136.88	134.77			23.96
90-59-00	89-01-00	N78-56-00E	22.47	4.31		22.05	
176-14-00	3-46-00	N82-42-00E	55.09	7.00		54.64	
148-52-00	11-08-00	S86-10-00E	121.62		8.13	121.35	
162-16-00	17-44-00	S68-26-00E	62.75		23.07	58.36	
177-14-00	2-46-00	S65-40-00E	106.00		43.68	96.58	
109-13-00	70-47-00	S5-07-00W	13.52		13.97		1.20
105-06-15	74-53-45	S80-00-45W	332.86		57.73		327.82
1080-00-00	360-00-00			146.08	146.08	352.98	352.98

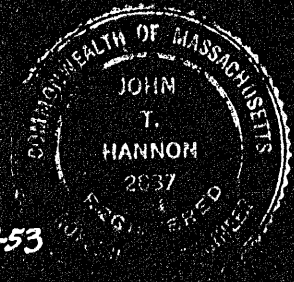
DEGREE PLAN
 Order..... Pas-ca
 Traverse filed *copy plan*
 Atlas.....
 Drawn by.....
 Bath. by.....
 Inspected by.....
 Approved.....

I certify that this actual survey was made on the ground in accordance with the Land Court Instructions of 1950 between July 14 and November 15, 1952.

Date - *November 19, 1952*
John T. Hannon
 Surveyor

MAY BE FILED
 12-22-52
 D. J.

Additions in orange made from letter filed 1-28-53
 L.T.S.



Plan of Land in
RANDOLPH - MASS.

Scale - 30 feet to an inch.

November 1952. JOHN T. HANNON, C.E.
 40 HILLS ST.
 RANDOLPH, MASS.

24024