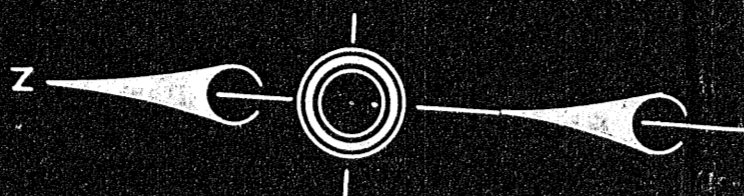
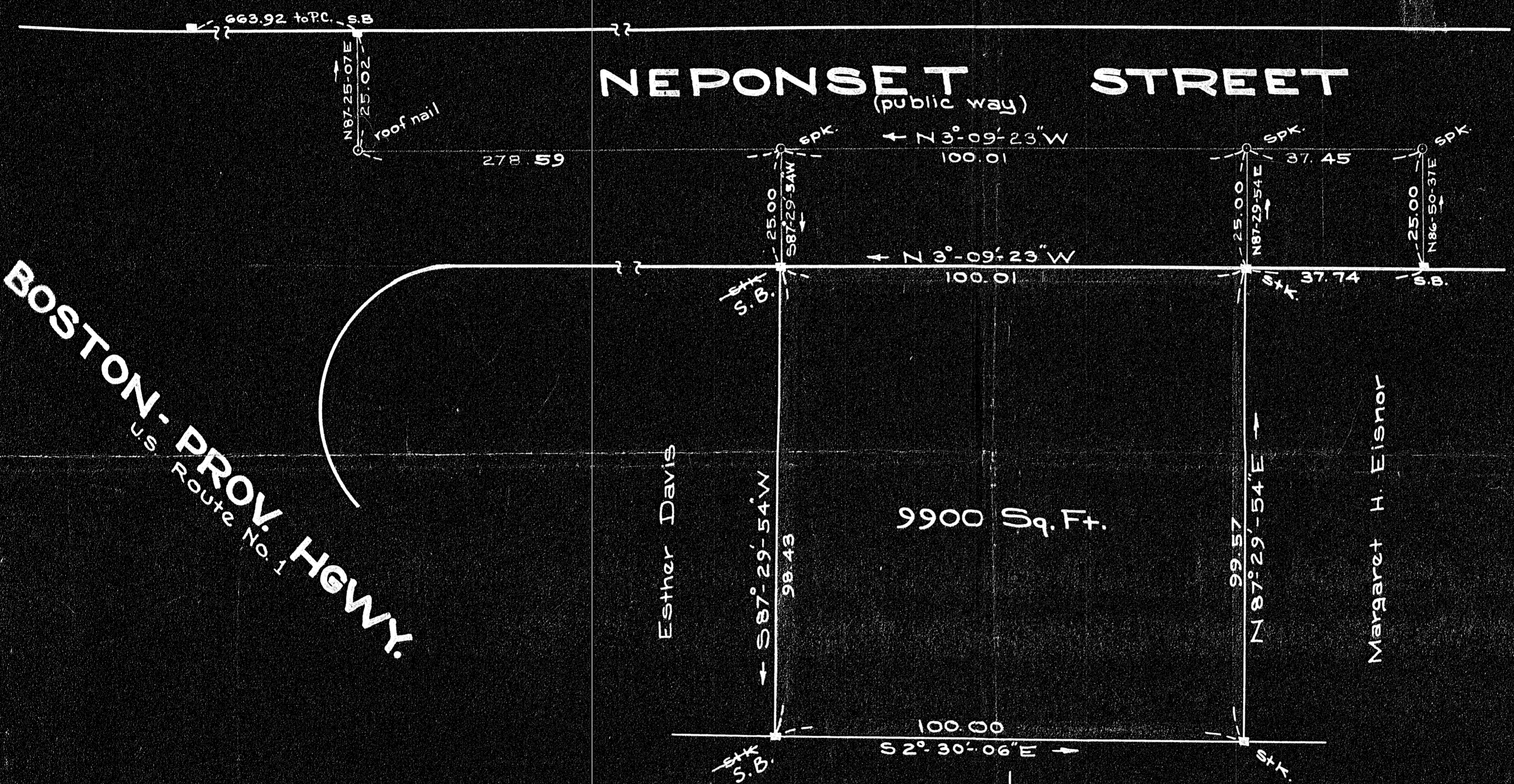


23856A



NEPONSET STREET

(public way)



BOSTON-PROV. HWY.
US Route No. 1

Esther Davis

Margaret H. Eisnor

9900 Sq. Ft.

Town of Norwood

James & Margaret Croskerry



I certify that this actual survey was made on the ground in accordance with the Land Court Instructions of 1950 on Sept 25, 1952.

Date: Sept. 25, 1950.

Arnold E. Schaler

See letter in Engr. files re: Bds set.
10-10-52. L.T.S.

DECEED PLAN
Order..... Papers.....
Traverse filed <u>yes</u>
Atlas.....
Drawn by.....
Math. by.....
Inspected by.....
Approved.....

PLAN OF LAND IN NORWOOD, MASS.

Scale: 1 inch = 20 feet
Sept. 24, 1952
Arnold E. Schaler C.E.
45 Second St.
Norwood, Mass.

23856
MAY BE FILED
Date 10-10-52 by K100

23856A