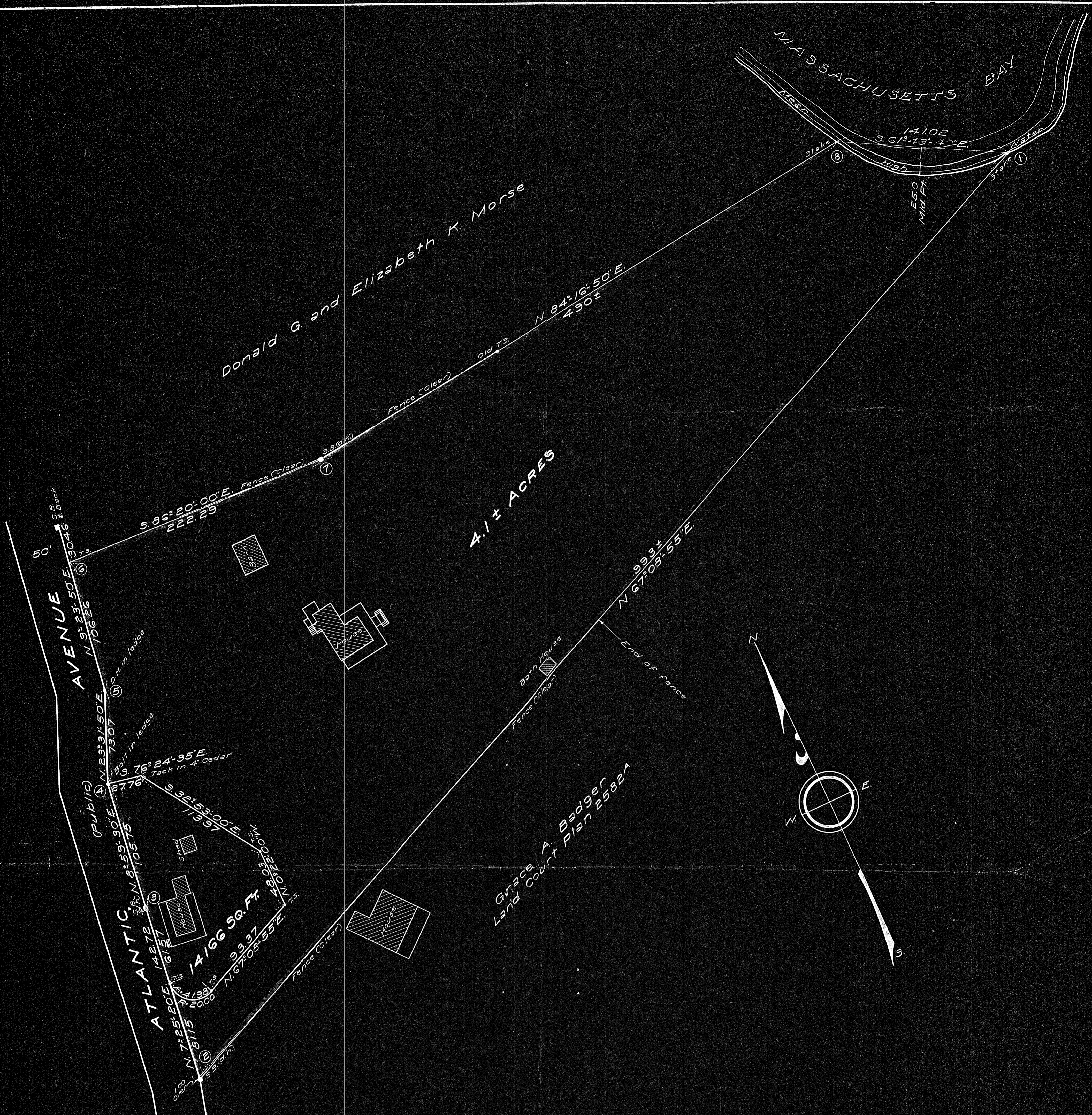


23764A



Class A Survey

Sta.	Interior Angle	Defl. Angle	Azimuth	Dist	+Sine	-Sine	+Cos.	-Cos.
1	51°07'25"	128°52'35"	67°08'55"	993.0	915.07		385.62	
2	53°43'35"	120°16'25"	187°25'20"	142.72		1844	141.52	
3	178°25'50"	1°34'10"	188°59'30"	105.75		16.53	104.45	
4	165°27'40"	14°32'20"	203°31'50"	73.07		29.17	66.99	
5	194°08'00"	-14°08'00"	189°23'50"	106.26		17.35	104.83	
6	93°49'50"	84°16'10"	273°40'00"	222.29		221.83	14.21	
7	189°23'10"	-9°23'10"	264°16'50"	490.0		487.56	48.83	
8	146°00'30"	33°59'30"	298°16'20"	141.02		124.20	66.80	
	1080°00'00"	360°00'00"			915.07	915.08	466.63	466.62

I certify that this actual survey was made on the ground in accordance with the Land Court instructions of 1950 on May 23, 1952.

June 11, 1952. *Lewis W. Perkins* Eng'r

PLAN OF LAND
IN
COHASSET, MASS.

Scale: 40 feet to an inch. June 11, 1952.
Lewis W. Perkins and Son, Eng'rs, Hingham, Mass.

DETAILED PLAN
 Bridge...
 Trenches...
 Other...
 Made by...
 Drawn by...
 Inspected by...
 Approved...

MASSACHUSETTS
 LAND COURT
 Date: June 11, 1952

23764

3647 A