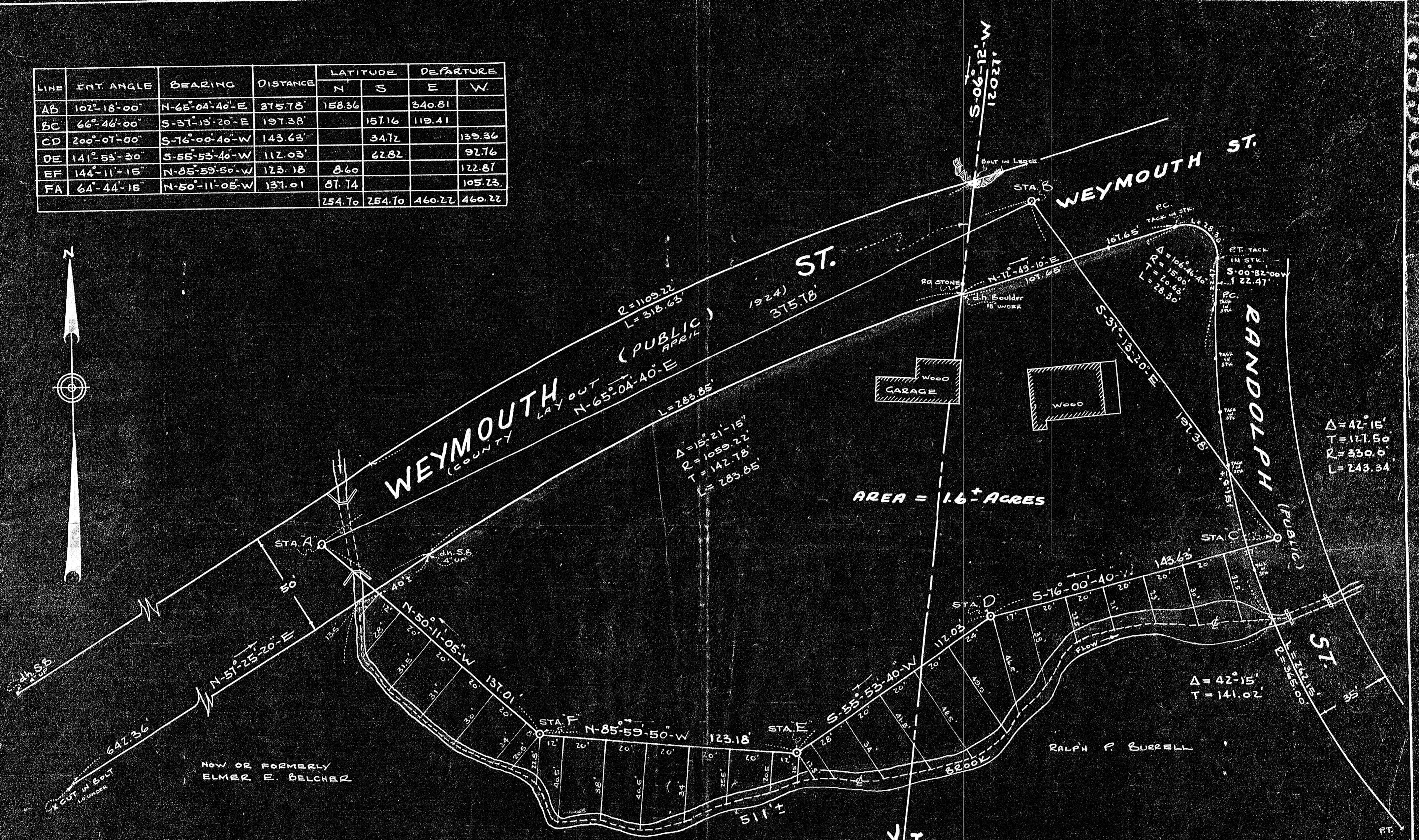


LINE	INT. ANGLE	BEARING	DISTANCE	LATITUDE		DEPARTURE	
				N	S	E	W
AB	102°-18'-00"	N-65°-04'-40"-E	375.78	158.36		340.81	
BC	66°-46'-00"	S-37°-13'-20"-E	197.38		157.16	119.41	
CD	200°-07'-00"	S-76°-00'-40"-W	143.63		34.72		139.36
DE	141°-53'-30"	S-55°-53'-40"-W	112.03		62.82		92.76
EF	144°-11'-15"	N-85°-59'-50"-W	123.18	8.60			122.87
FA	64°-44'-15"	N-50°-11'-05"-W	137.01	87.74			105.23
				254.70	254.70	460.22	460.22



23683

23683

I certify that this actual survey was made on the ground in accordance with the Land Court Instructions of 1950 on or between Sept. 1951 and Nov. 1951.

Dec. 22 1951
 Charles L. Baxter
 502 Adams St.
 No. Abington Mass.

DECREE PLAN
 Order Papers
 Traverses filed *see plan*
 Atlas
 Drawn by
 Math by
 Inspected by
 Approved
 Date By

Weymouth PL 52
 Holbrook PL 21

93683
MAY BE FILED
 6-12-51
 Date By

HOLBROOK
WEYMOUTH

**PLAN OF LAND
 IN
 HOLBROOK - WEYMOUTH**

Scale 1"=30' Dec. 1951

$\Delta = 42^\circ-15'$
 $T = 121.50$
 $R = 330.0$
 $L = 243.34$

$\Delta = 42^\circ-15'$
 $T = 141.02$

$\Delta = 15^\circ-21'-15"$
 $R = 1059.22$
 $T = 142.78$
 $L = 283.85$

$\Delta = 106^\circ-41'-46"$
 $R = 15.06$
 $T = 20.63$
 $L = 28.30$

