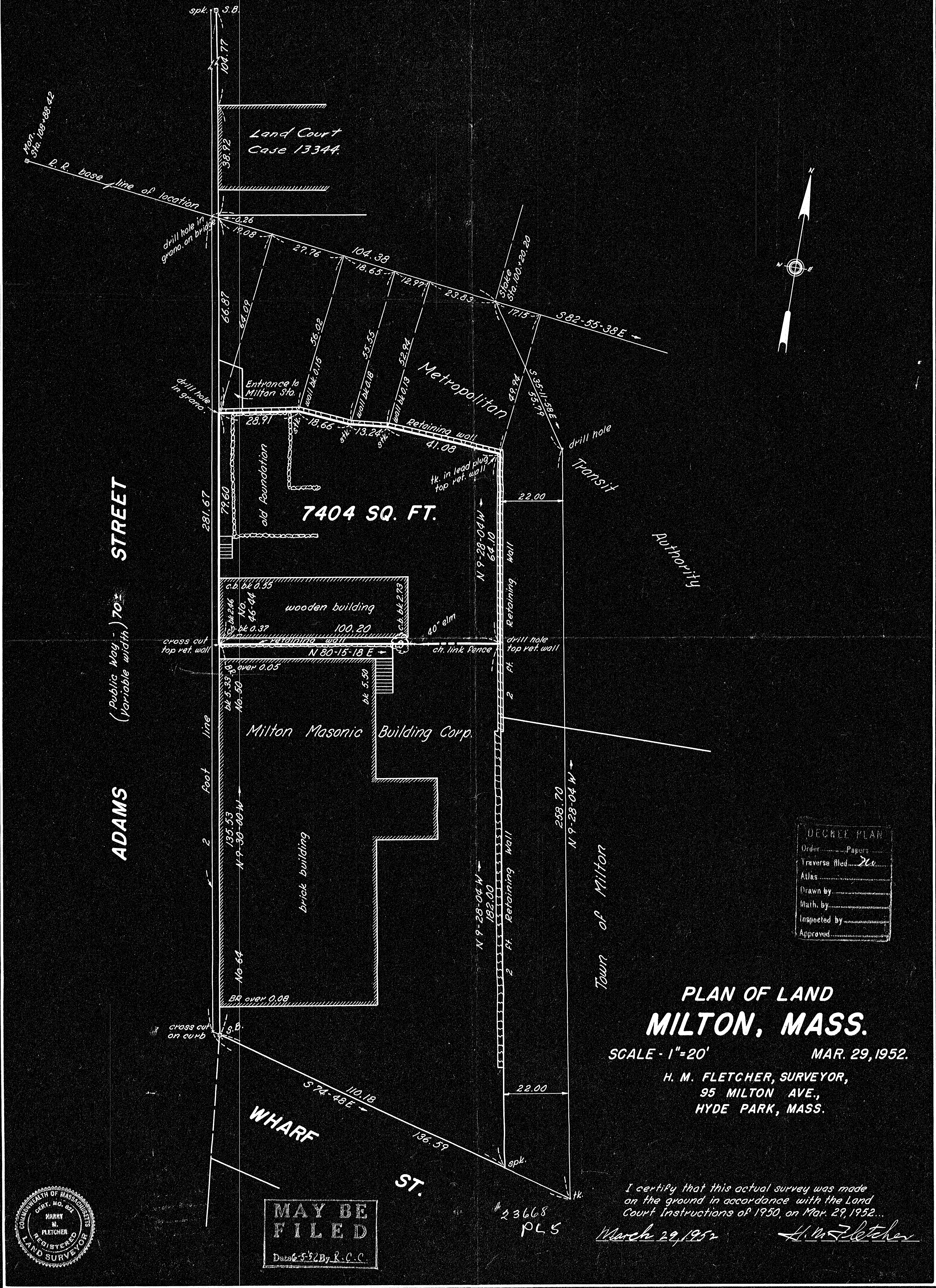


23668A



ADAMS STREET
(Public Way - Variable width) 70'

7404 SQ. FT.

Milton Masonic Building Corp.

PLAN OF LAND MILTON, MASS.

SCALE - 1" = 20' MAR. 29, 1952.

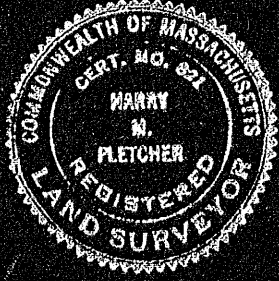
H. M. FLETCHER, SURVEYOR,
95 MILTON AVE.,
HYDE PARK, MASS.

DECREE PLAN	
Order.....	Papers.....
Traverse filed.....	<i>de</i>
Atlas.....	
Drawn by.....	
Math. by.....	
Inspected by.....	
Approved.....	

I certify that this actual survey was made on the ground in accordance with the Land Court Instructions of 1950, on Mar. 29, 1952...

March 29, 1952

H. M. Fletcher



MAY BE FILED
Data 5-52 By R.C.C.

23668A