

23582A

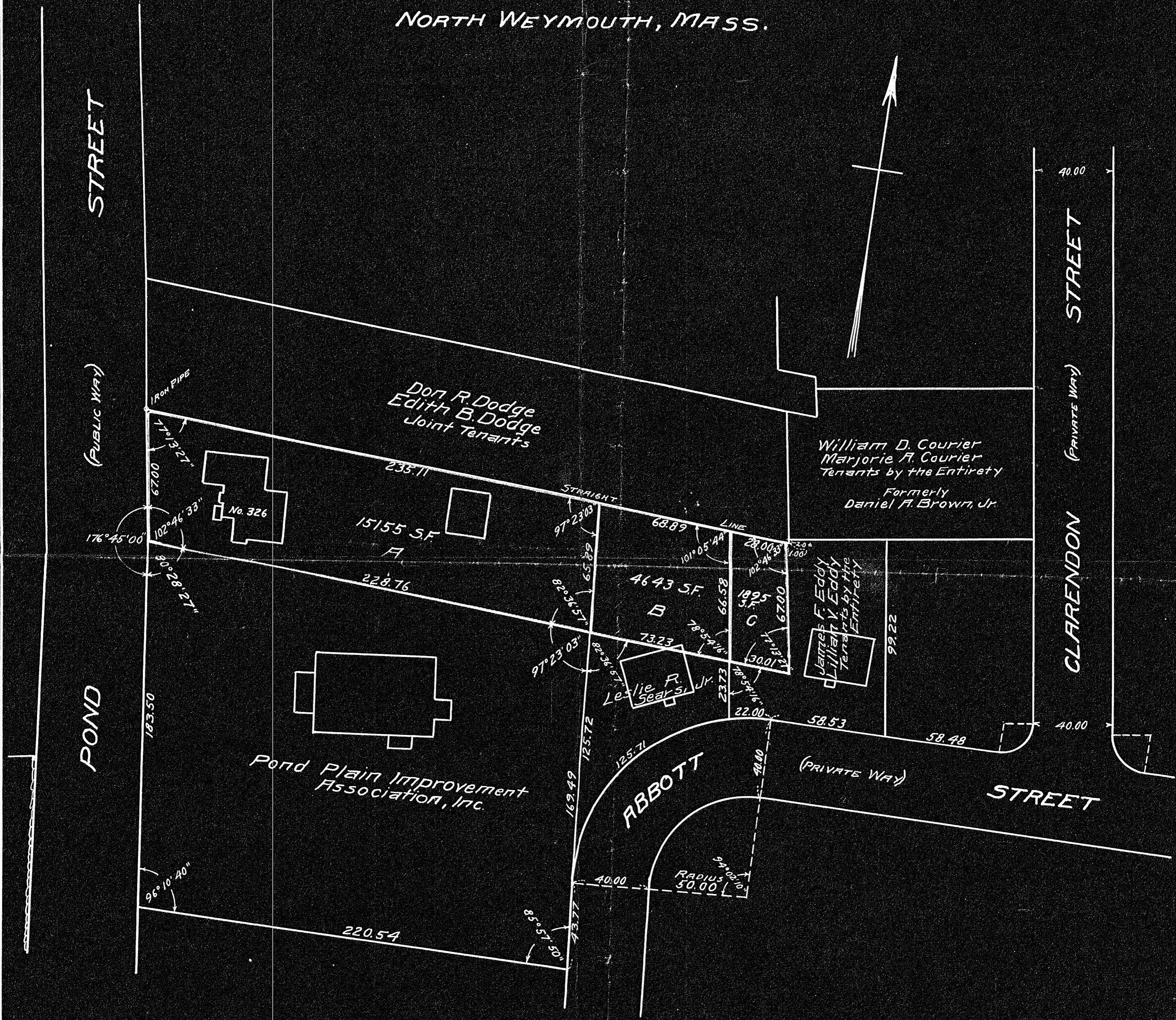
PLAN OF LAND IN (SOUTH) WEYMOUTH, MASS.

SCALE: 1" = 40'

DEC. 20, 1951

RUSSELL H. WHITING, REGISTERED LAND SURVEYOR

NORTH WEYMOUTH, MASS.



DECEDED PLAN
 Order of Papers
 Taken on yes
 Attest
 Drawn by
 Math. by
 Inspected by
 Approved

23582

I CERTIFY THAT THIS ACTUAL SURVEY WAS MADE ON THE GROUND IN DECEMBER 1951 IN ACCORDANCE WITH THE LAND COURT INSTRUCTIONS OF 1950

DATE: Dec. 20, 1951

Russell H. Whiting, SURVEYOR

5-1-52

23582A