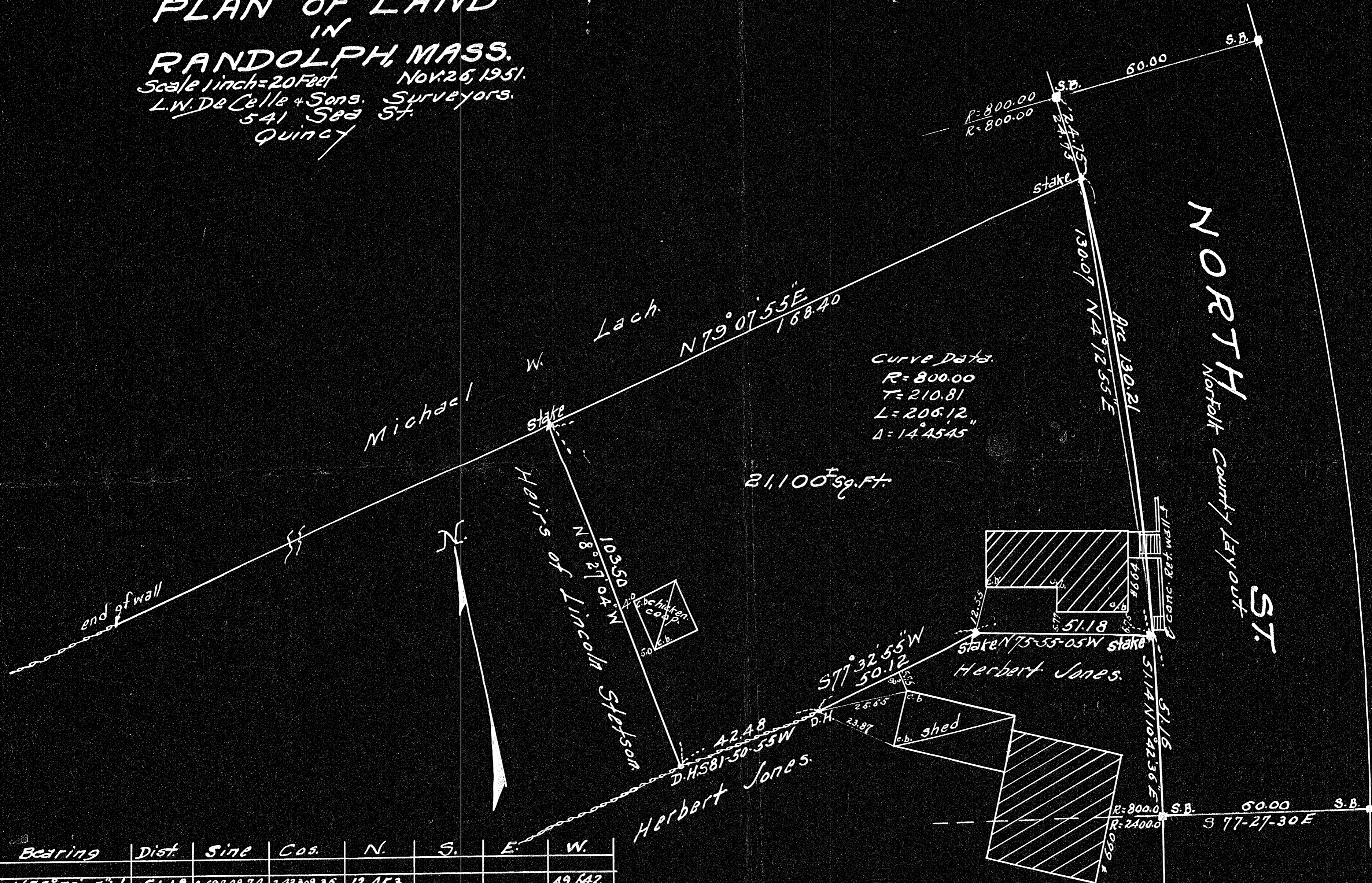


**PLAN OF LAND**  
**IN**  
**RANDOLPH, MASS.**  
 Scale 1 inch = 20 Feet  
 Nov. 26, 1951.  
 L.W. DeCelle & Sons, Surveyors.  
 541 Sea St.  
 Quincy



Bearing	Dist.	Sine	Cos.	N.	S.	E.	W.
N 75° 55' 05" W	51.18	96934874	24330936	12.453			49.642
S 77° 32' 55" W	50.12	97647929	21551122		10.806		48.941
S 81° 50' 55" W	42.48	98989688	14278913		6.066		42.050
N 8° 27' 04" W	103.50	14696546	98914162	102.376			15.211
N 79° 07' 55" E	168.40	98206399	18854734	31.751		165.378	
S 4° 12' 55" W	130.07	07350413	99729491		129.718		9.561
				146.580	146.590	165.378	165.405

I certify that this actual survey was made on the ground in accordance with Land Court instructions of 1950 on or between Oct. 10, and Nov. 24, 1951  
 Nov. 26, 1951 Lawrence W. DeCelle Surveyor.

DEGREE PLAN  
 Order of Survey  
 Original Filed ON PLAN  
 Date  
 Drawn by  
 Checked by  
 Approved

23396  
 MAY 1952  
 12-20-51, R.C.C.

23396A

23396A