

PLAN OF LAND IN
RANDOLPH, NORFOLK COUNTY, MASS.

SCALE: 1" = 20'

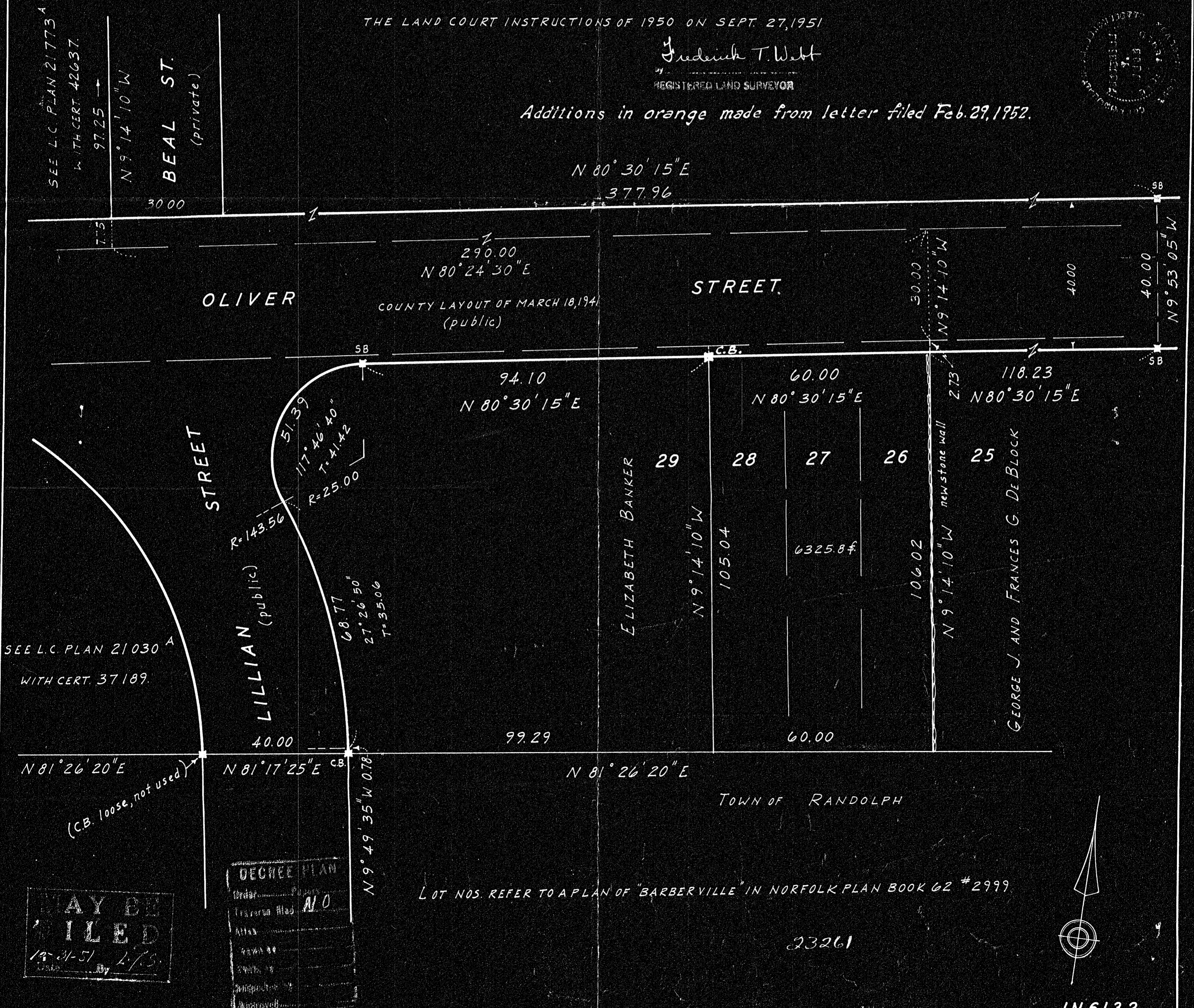
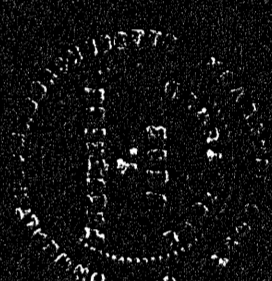
OCT. 11, 1951

THE SCHUYLER CLAPP COMPANY
 Civil Engineers & Surveyors
 Braintree, Mass.

I CERTIFY THAT THIS ACTUAL SURVEY WAS MADE ON THE GROUND IN ACCORDANCE WITH
 THE LAND COURT INSTRUCTIONS OF 1950 ON SEPT. 27, 1951

Fredrick T. West
 REGISTERED LAND SURVEYOR

Additions in orange made from letter filed Feb. 29, 1952.



MAY BE
 FILED
 12-21-51
 2/53

DECREE PLAN	
Order	NO
Reserve	
Area	
Drawn	
By	
Approved	

23261A