

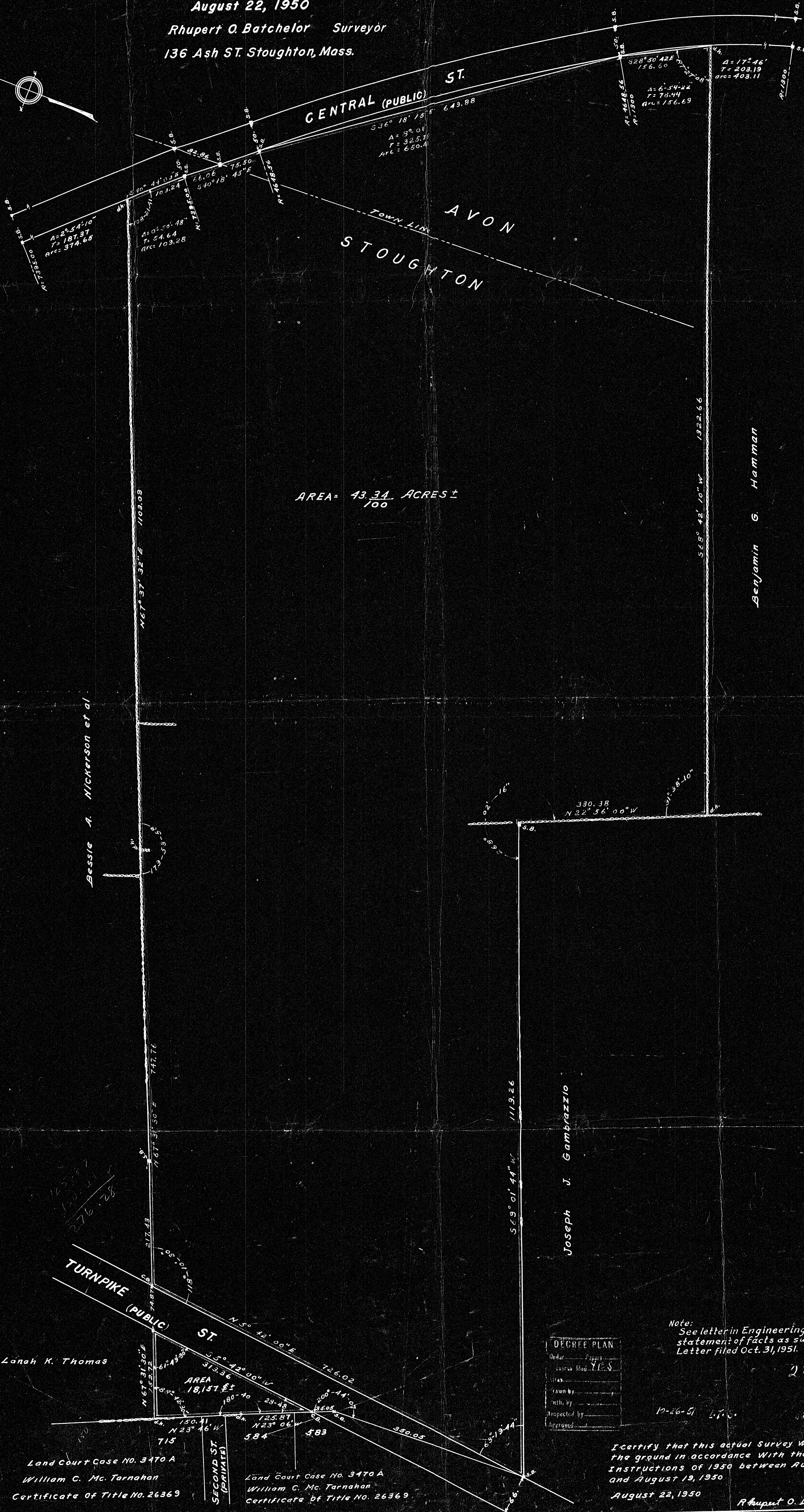
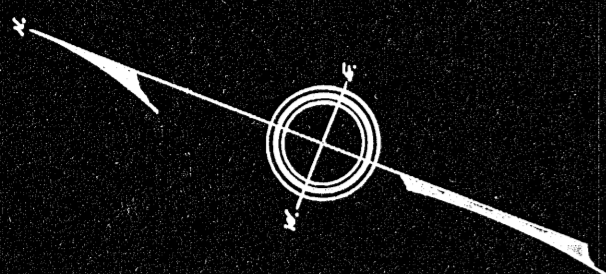
PLAN OF LAND IN STOUGHTON AND AVON

Scale 80 feet to an inch

August 22, 1950

Rhupert O. Batchelor Surveyor

136 Ash St. Stoughton, Mass.



AREA = 43.31 ACRES \pm / 100

Bessie A. Nickerson et al

Benjamin G. Hamman

Joseph J. Gambrazio

Lanch K. Thomas

Land Court Case No. 3470 A
William C. Mc. Tarnahan
Certificate of Title No. 26369

Land Court Case No. 3470 A
William C. Mc. Tarnahan
Certificate of Title No. 26369

DEGREE PLAN
Dated
Survey Made
Drawn by
Intd. by
Inspected by
Approved

Note:
See letter in Engineering files for
statement of facts as survey data.
Letter filed Oct. 31, 1951. C.D.H.

23253

I certify that this actual survey was made on
the ground in accordance with the Land Court
Instructions of 1950 between August 2,
and August 19, 1950
August 22, 1950
Rhupert O. Batchelor

23253A

23253A