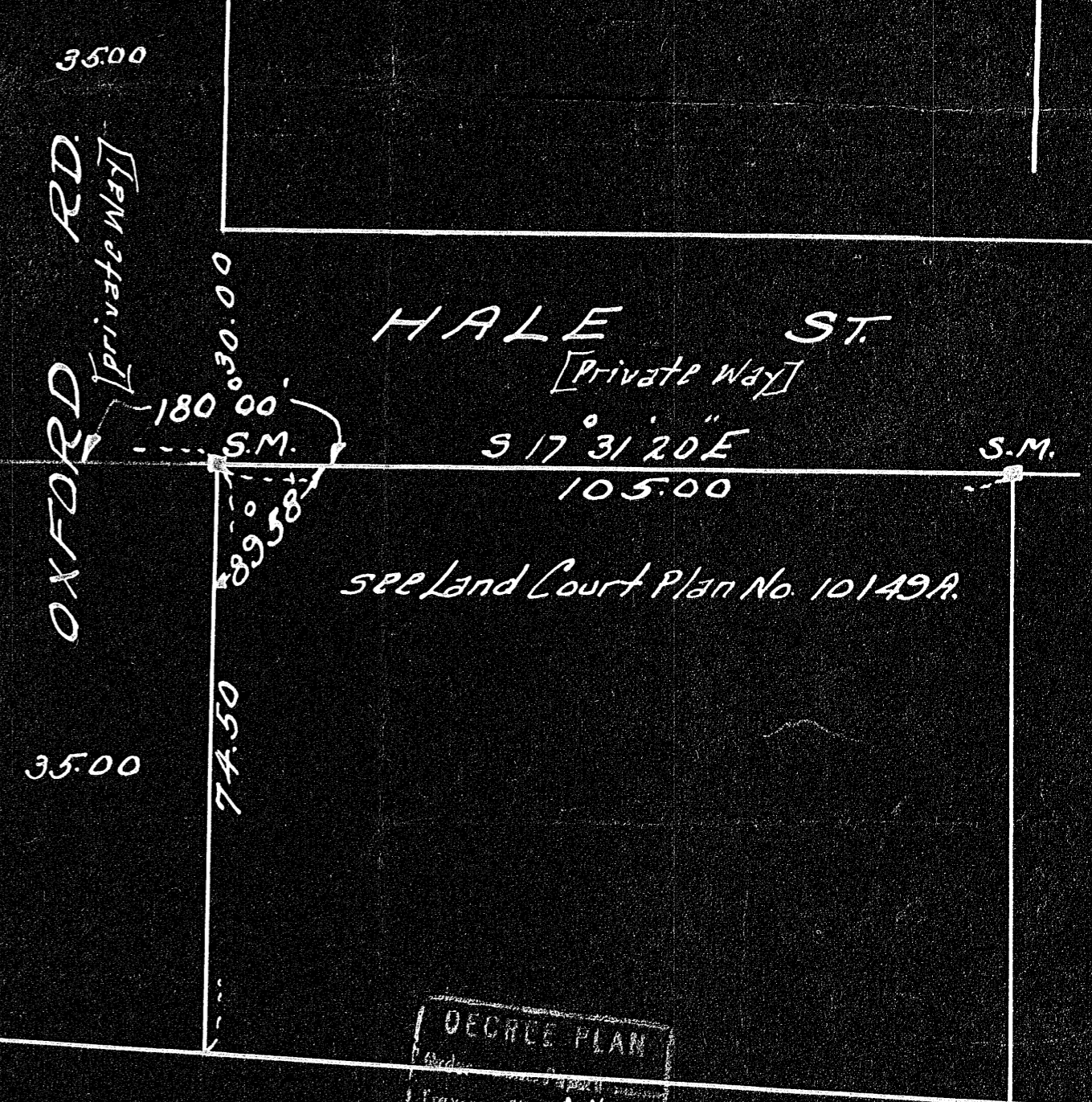
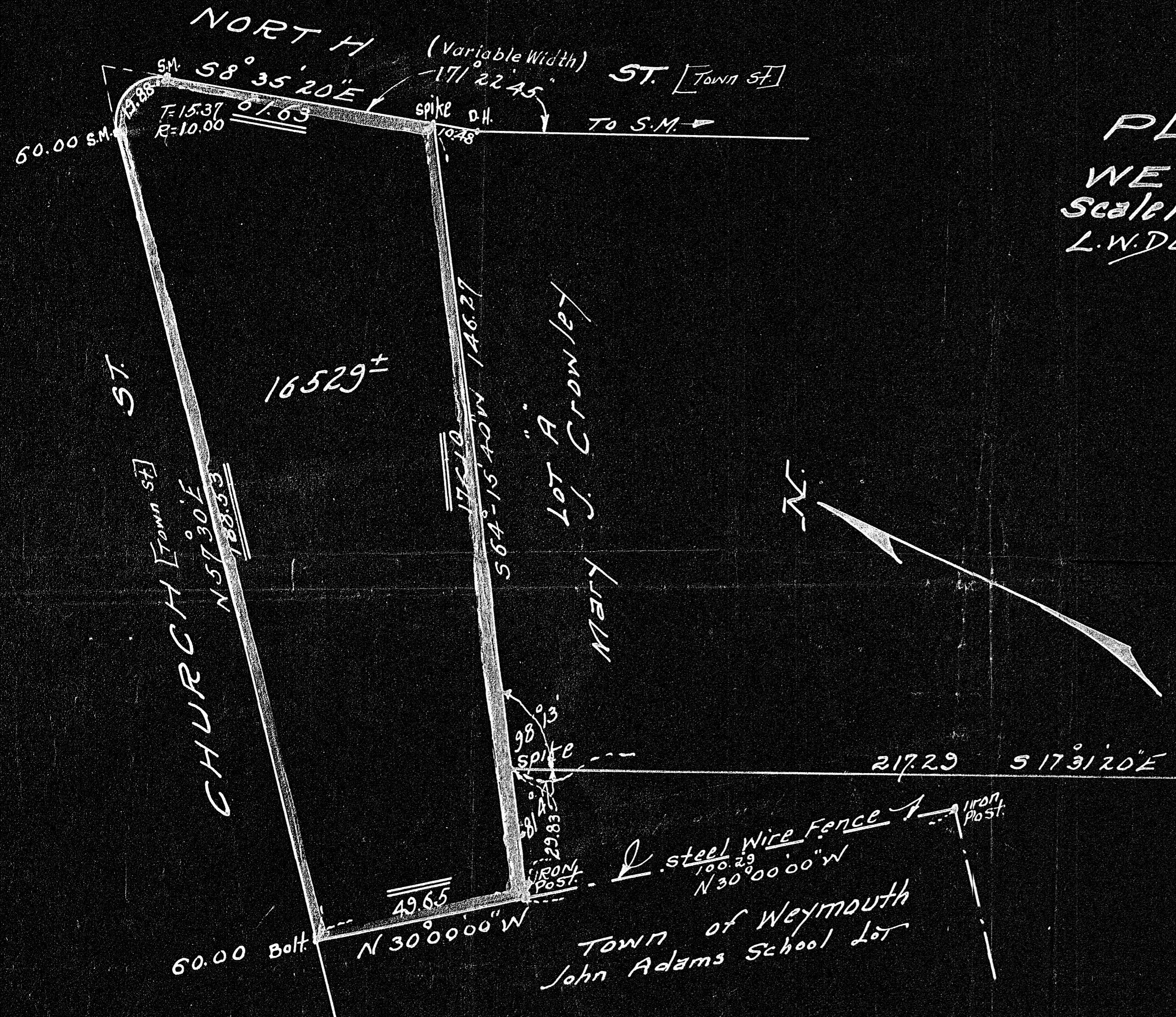


23234A

PLAN OF LAND
 WEYMOUTH, MASS.
 Scale 1"=20' Sept. 10, 1951.
 L.W. DeCelle & Sons, Surveyors
 541 Sea St.
 QUINCY

Addition in orange as per letter filed
 Oct. 22, 1951. C.D.H.
 I certify that this actual
 survey was made on the ground
 in accordance with Land
 Court instructions of 1950,
 on or between Sept. 7, 1951,
 Sept. 10, 1951
 Lawrence W. DeCelle
 Land Surveyor



	N.	S.	E.	W.
$S 8-35-20 E$	77.00	76.14	11.50	
$S 64-15-40 W$	176.10	75.41		158.65
$N 30-00-00 W$	49.65	43.00		24.82
$N 57-30-00 E$	203.90	109.55	171.97	
	157.55	157.55	183.47	183.47

MAY BE FILED
 10-16-51 R.C.C.

DEGREE PLAN
 Prepared by
 Traced by
 With by
 Inspected by
 Approved

PL 13

23234A