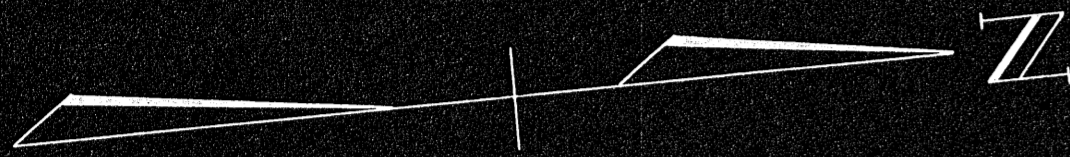
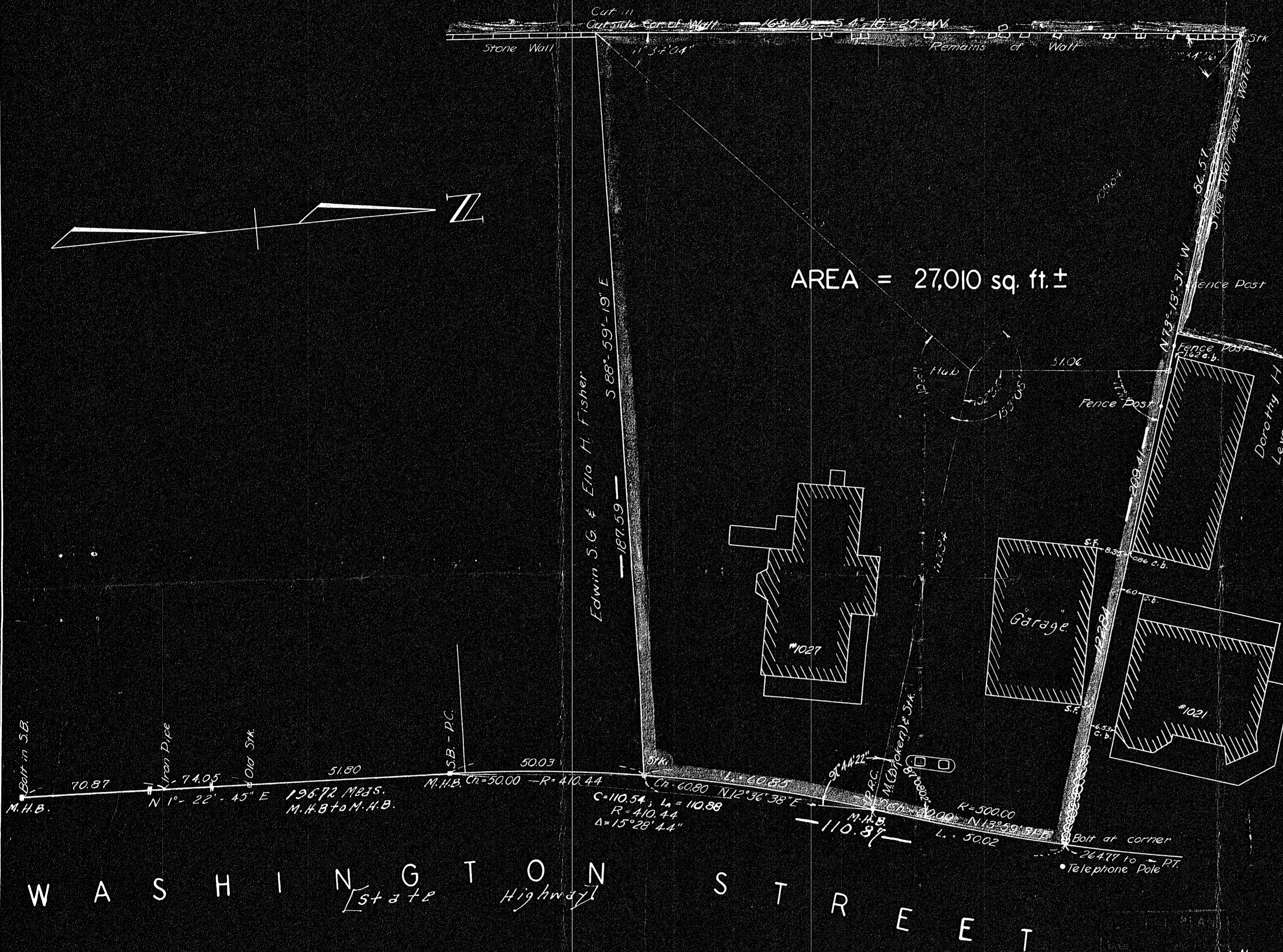


Sunset Lake



AREA = 27,010 sq. ft. ±

BEARING	DISTANCE	COS.	SIN.	LATITUDE	DEPARTURE
				N	W
N 12° 36' 38" E	60.80	0.97588	0.21832	+ 59.35	+ 13.27
N 13° 59' 31" E	50.00	0.97033	0.24179	+ 48.52	+ 12.09
N 73° 13' 31" W	209.41	0.28861	0.95745	+ 60.44	- 200.50
S 4° 18' 25" W	165.45	0.99718	0.07570	- 164.98	- 12.42
S 88° 59' 19" E	187.59	0.01765	0.99964	- 3.31	+ 187.56
				+ 168.29	- 168.29
				+ 212.92	- 212.92



I certify that this actual survey was made on the ground in accordance with the Land Court Instructions of 1950 on July 13, 1951.

July 30, 1951

Laurance W. Decelle
Surveyor

PLAN OF LAND
WASHINGTON STREET
BRAINTREE, MASS.

SCALE: 1" = 20' JULY 30, 1951
L. W. DECELLE — SURVEYOR — QUINCY, MASS.