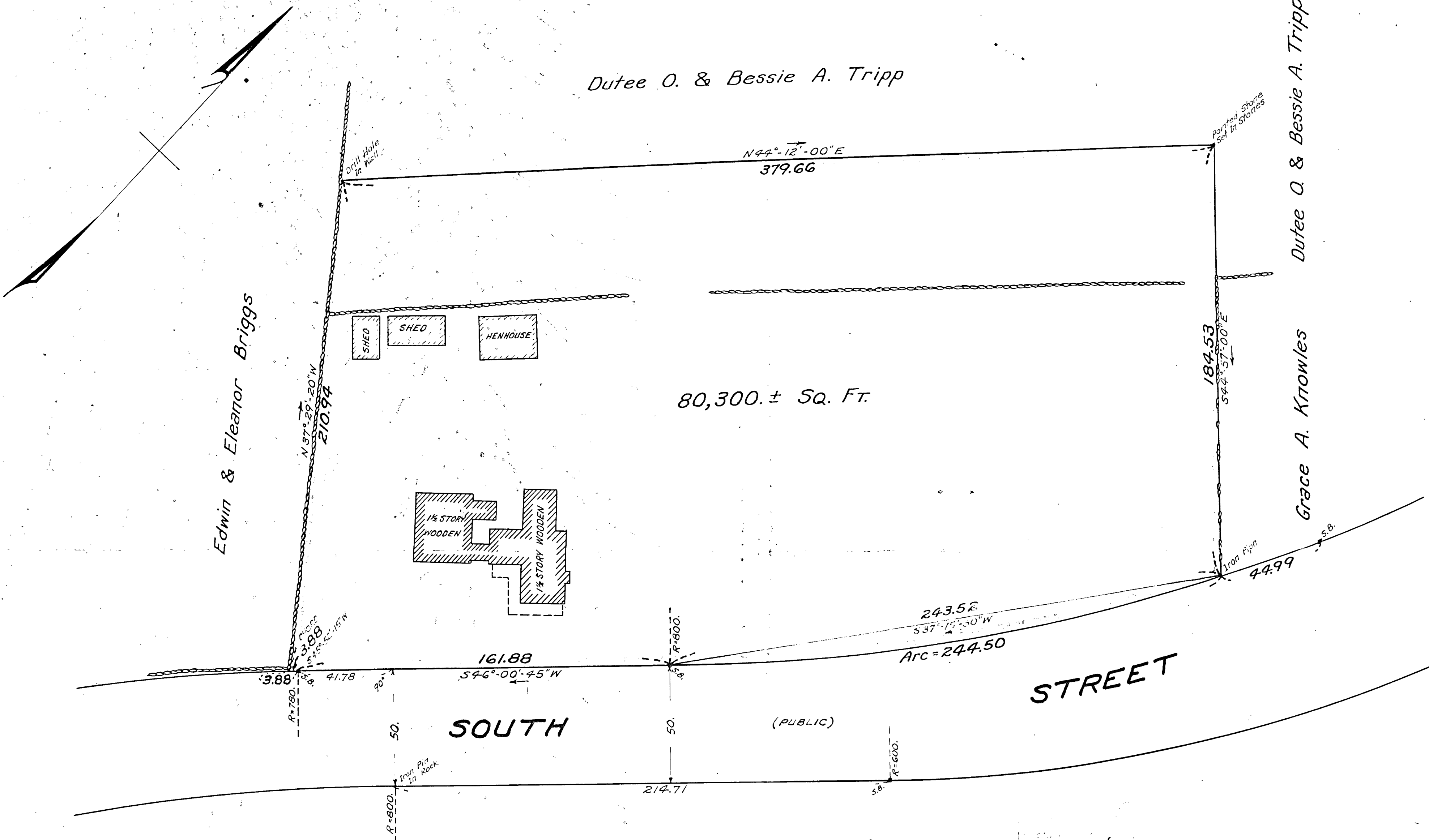


25001691

Dutee O. & Bessie A. Tripp

Dutee O. & Bessie A. Tripp

Grace A. Knowles



INTERIOR ANGLE	DEFLECTION ANGLE	BEARING	DIST.	LATITUDE		DEPARTURE	
				NORTH	SOUTH	EAST	WEST
171-14-45	8-45-15	S46-00-45W	161.88		112.43		116.47
180-08-30	-0-08-30	S45-52-15W	3.88		2.70		2.78
83-21-35	96-38-25	N37-29-20W	210.94	167.37			128.38
98-18-40	81-41-20	N44-12-00E	379.66	272.18		264.69	
89-09-00	90-51-00	S44-57-00E	184.53		130.60	130.37	
97-47-30	82-12-30	S37-15-30W	243.52		193.82	147.43	
720-00-00	360-00-00			439.55	439.55	395.06	395.06

I certify that this ^{actual} survey was made ^{on the ground} in accordance with Land Court instructions of 1950.

Date July 26, 1950

James A. Freeman
 Surveyor

23056
 Additions in orange as per letter file July 3, 1951. C.D.H.

Plan of Land in
FOXBOROUGH - MASS.

Scale - 30 feet to an inch
 July 1950.

JAMES A. FREEMAN, C.E.
 429 NORTH MAIN ST.
 ATTLEBORO, MASS.