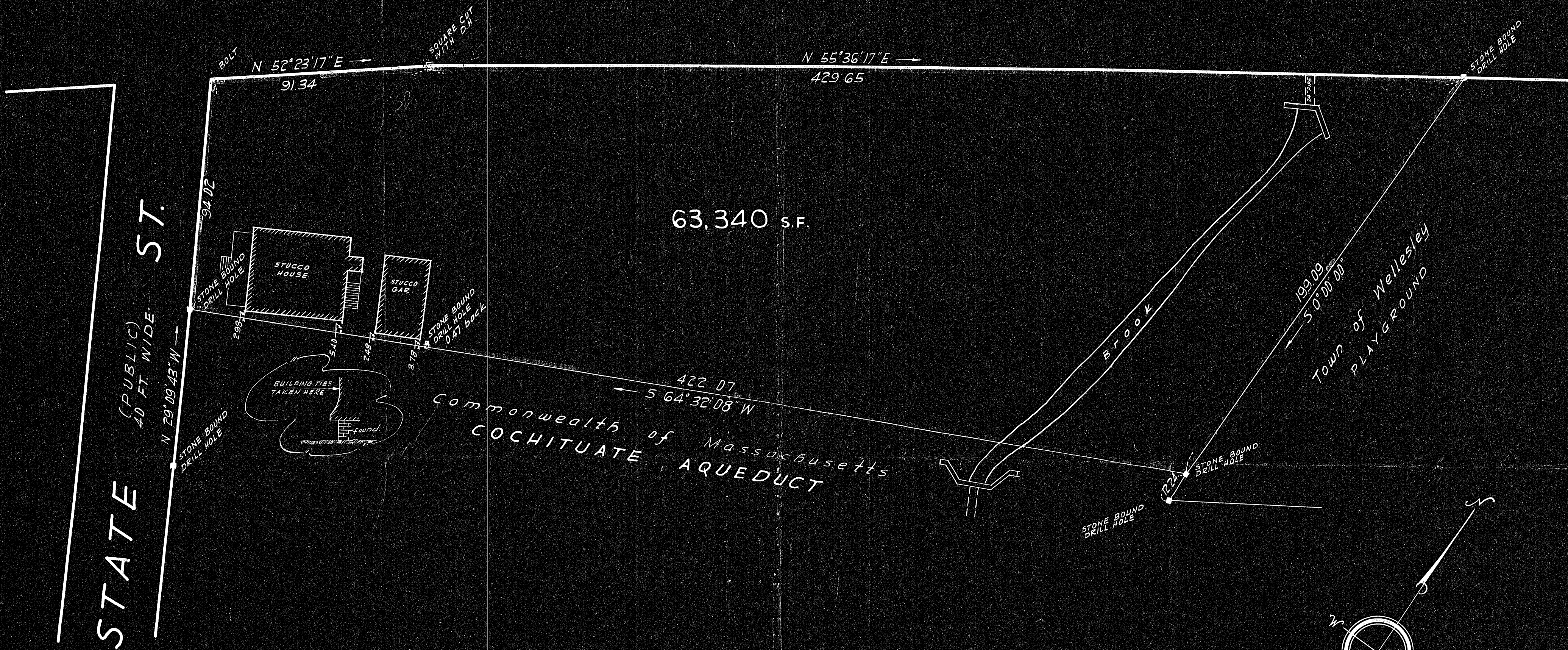


WASHINGTON

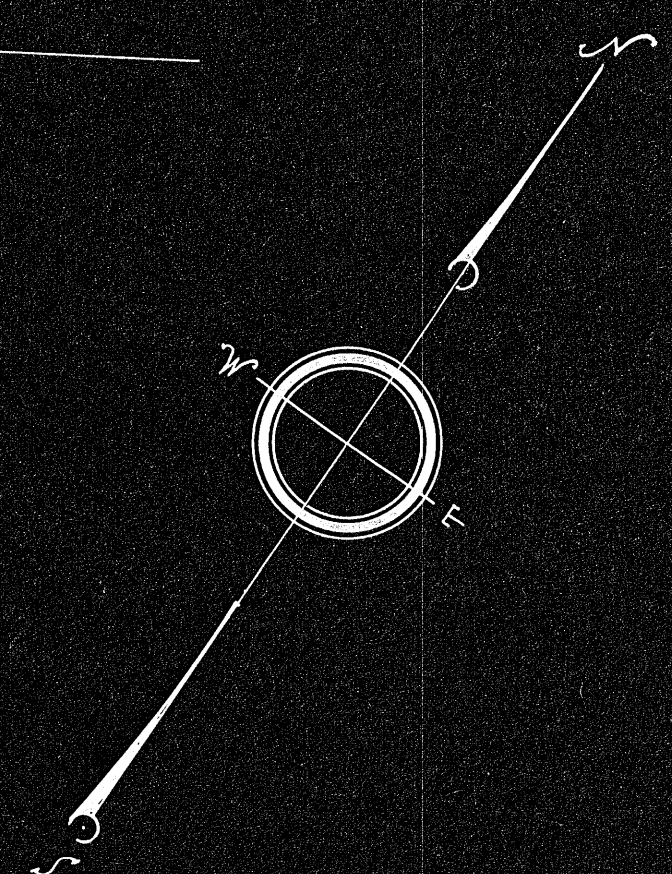
(PUBLIC)
WIDTH VARIABLE

STREET



PLAN OF LAND
IN
WELLESLEY · MASS.

SCALE: 1 IN. = 30 FT. APRIL 12, 1951
EVERETT M. BROOKS CO. CIVIL ENGINEERS
259 WALNUT ST. · NEWTONVILLE - MASS.



	BEARING	N	S	E	W
94.02	N 29° 09' 43" W	82.10			45.81
91.34	N 52° 23' 17" E	55.75		72.35	
429.65	N 55° 36' 17" E	242.71		354.53	
199.09	S 0° 00' 00"		199.09		
422.07	S 64° 32' 08" W		181.47		381.07
		380.56	380.56	426.88	426.88

MAY BE
FILED
Date 5-22-51 By R.C.C.



PLAN
ON PLAN

I certify that this actual survey was made on the ground in accordance with land Court instructions of 1950.

Date: April 12, 1951
surveyor