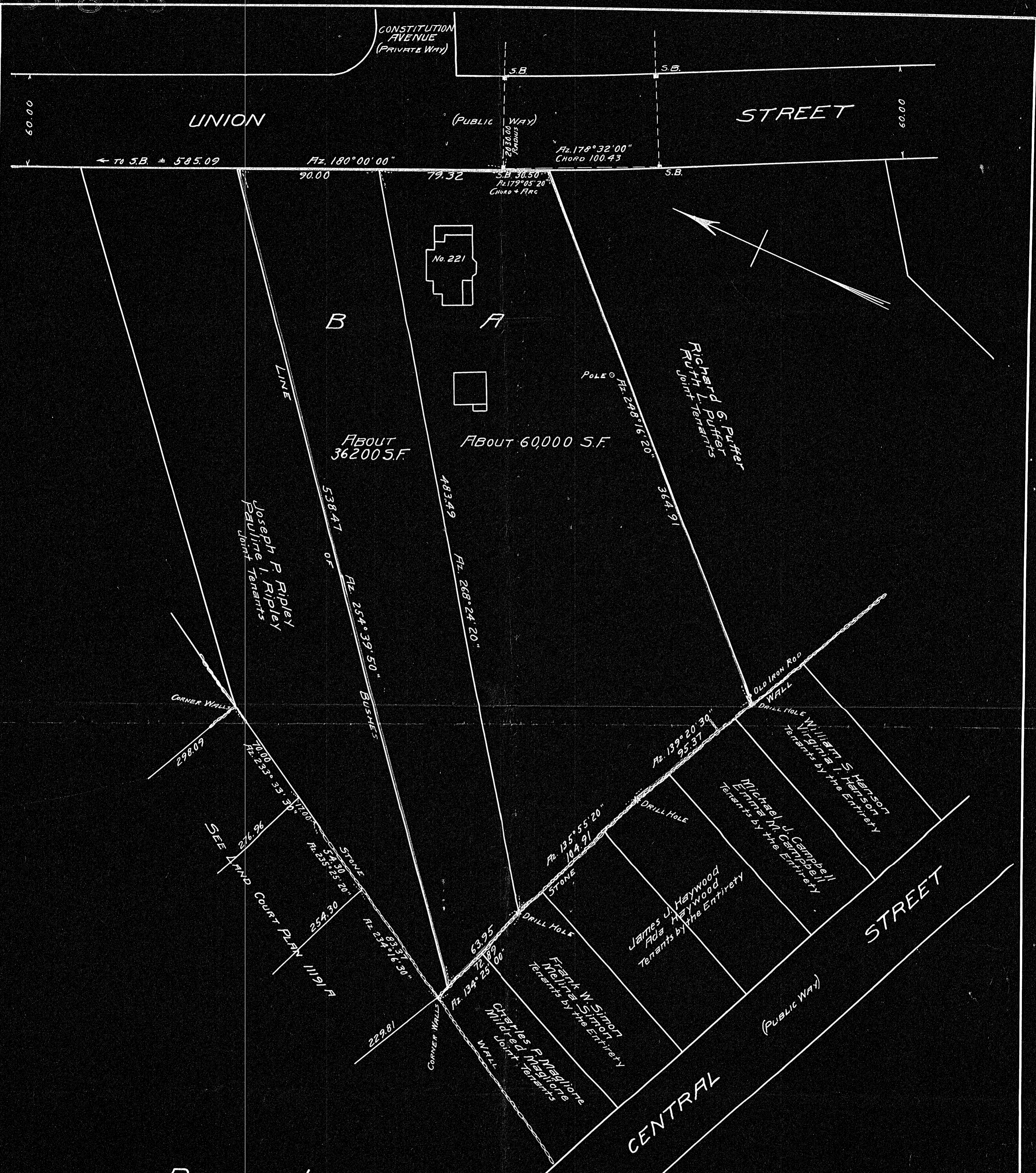


W61822



PLAN OF LAND IN
(SOUTH) WEYMOUTH, MASS.

SCALE: 1" = 40'

JAN. 25, 1951

RUSSELL H. WHITING, REGISTERED LAND SURVEYOR
NORTH WEYMOUTH, MASS.

DEED PLAN
Book
Page
Recorded
YES
FILED
DATE
BY
RECORDED
DATE
BY

22819 PL 50

I CERTIFY THAT THIS ACTUAL SURVEY WAS MADE ON THE GROUND
IN JANUARY 1951 IN ACCORDANCE WITH THE LAND COURT INSTRUCTIONS OF 1950

DATE: January 25, 1951

Russell H. Whiting, SURVEYOR

2-12-51 L.T.S.

22819A