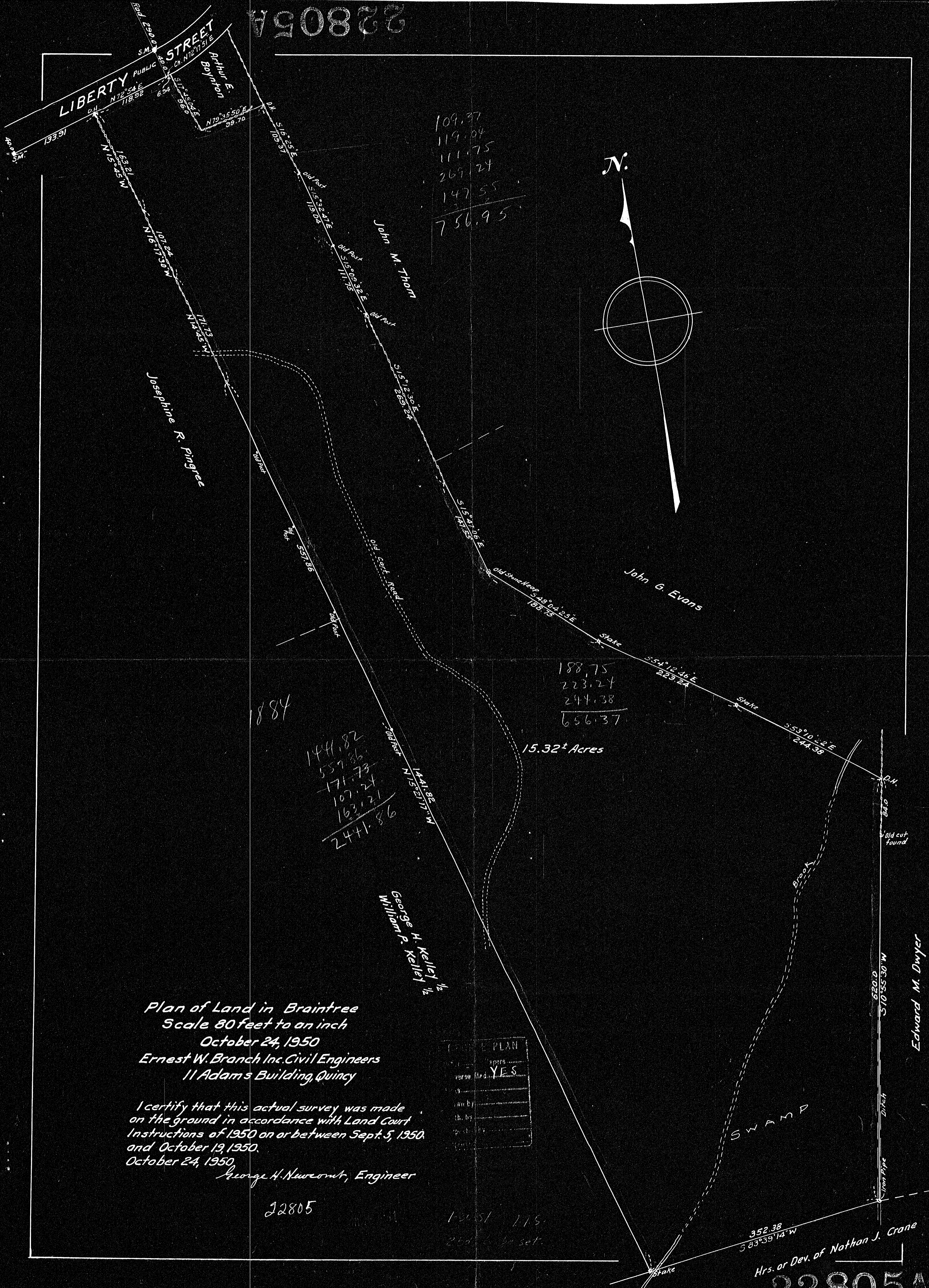
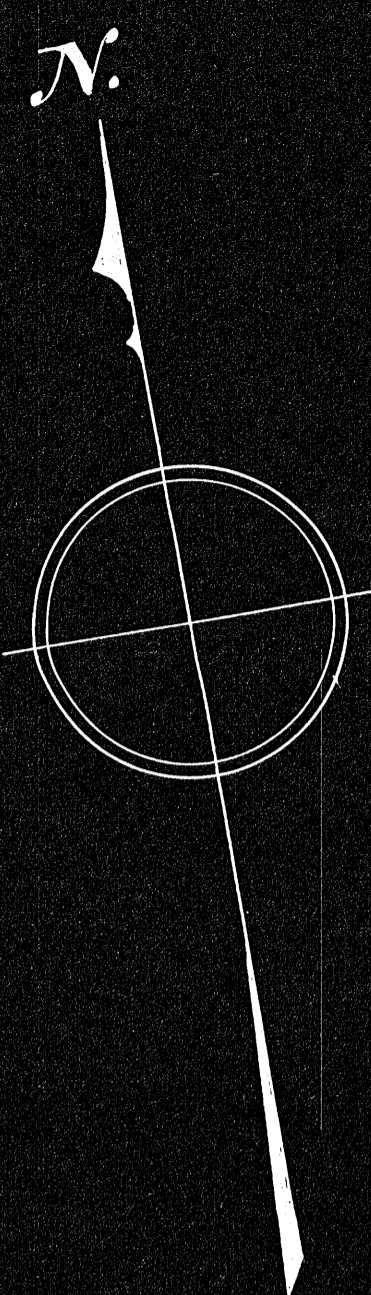


22805A



109.37
 119.04
 111.75
 269.24
 147.55
 756.95



188.75
 223.24
 244.38
 656.37

884

144.82
 557.86
 171.73
 107.24
 163.21
 2441.86

15.32± Acres

Plan of Land in Braintree
 Scale 80 feet to an inch
 October 24, 1950
 Ernest W. Branch Inc. Civil Engineers
 11 Adams Building, Quincy

I certify that this actual survey was made
 on the ground in accordance with Land Court
 Instructions of 1950 on or between Sept. 5, 1950,
 and October 19, 1950.
 October 24, 1950
 George H. Newcomb, Engineer

PLAN	
APPROVED	YES
DATE	
BY	
FOR	

22805

12051 115.
 260 1/2 set.

352.38
 S 83° 39' 14" W
 Hrs. or Dev. of Nathan J. Crane

22805A