

James R. Gormley, et ux.  
(formerly Mary H. Smith.)

Plan of Land in  
**MEDWAY, MASS.**

Scale: 1 in. = 40 ft.

Frank L. Cheney,  
Civil Engineer.

Nov. 1, 1945.



I certify that this survey was made in accordance with Land Court instructions.

*Frank L. Cheney*  
Civil Engineer

James R. Gormley, et ux.

Area = 62111. Sq. Ft.

Property Line Traverse.						N.	E.	Point.
Bearing.	Dist.	N.	S.	E.	W.			
N 22° 44' 03" W	278.05	274.89		(chord)	115.18	560.85	1829.06	P.C.
N 29° 35' 00" W	76.24	66.30			37.64	627.15	1791.42	
N 85° 57' 50" E	285.36	20.08		284.65		647.23	2076.07	dh.
S 03° 24' 40" E	60.17		60.06	3.58		587.17	2079.65	
S 0° 03' 50" E	63.74		63.74	0.07		523.43	2079.72	dh.
S 0° 07' 00" W	64.45		64.45		0.13	405.78	2075.31	dh.
S 55° 56' 40" W	53.00		29.68		43.91	376.10	2031.40	
S 49° 07' 50" W	50.85		33.27		38.45	342.83	1992.95	
S 44° 29' 10" W	50.49		36.02		35.38	306.81	1957.57	
S 32° 35' 30" W	24.75		20.85		13.33	285.96	1944.24	
		361.27	361.27	288.30	288.30			

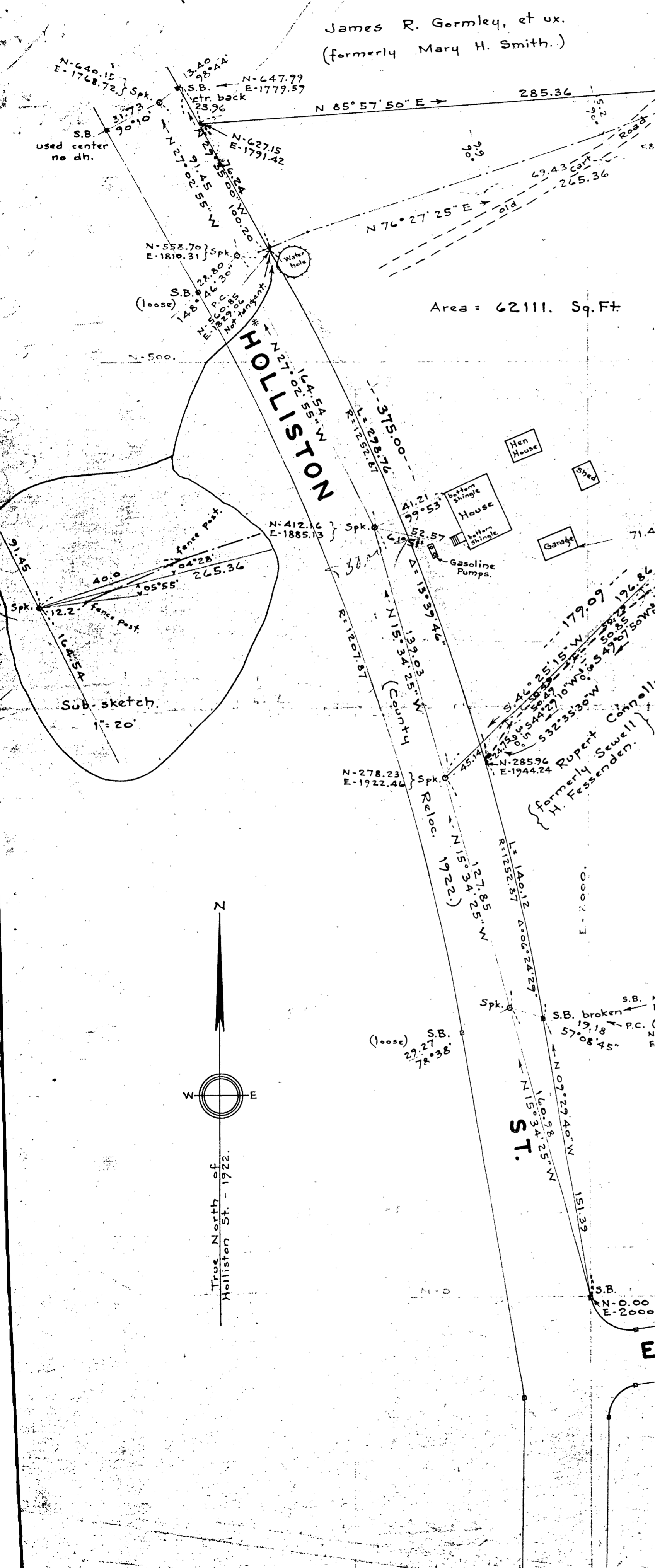
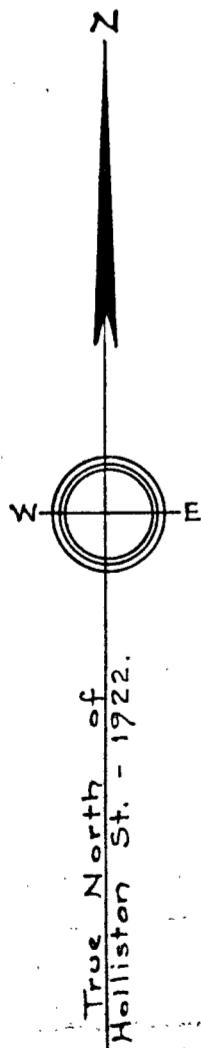
Transit Line Traverse						N.	E.	Point.
Bearing.	Dist.	N.	S.	E.	W.			
N 15° 34' 25" W	139.03	133.93			37.33	412.16	1885.13	Spk.
N 27° 02' 55" W	164.54	146.54			74.82	558.70	1810.31	Spk.
N 76° 27' 25" E	265.36	62.14		257.98		620.84	2068.29	Stk.
S 00° 57' 05" E	96.69		96.68	1.61		524.16	2069.90	Stk.
S 02° 30' 25" W	110.33		110.22		4.83	413.94	2065.07	Stk.
S 46° 25' 15" W	196.86		135.71		142.61	278.23	1922.46	Spk.
		342.61	342.61	259.59	259.59			

Survey closure 1:13739.

DECREE PLAN

Order.....  
 Traverse filed  N.P.L.  
 Atlas.....  
 Drawn by.....  
 Math. by.....  
 Inspected by.....  
 Approved.....

ELLIS ST.



22678  
AL-38