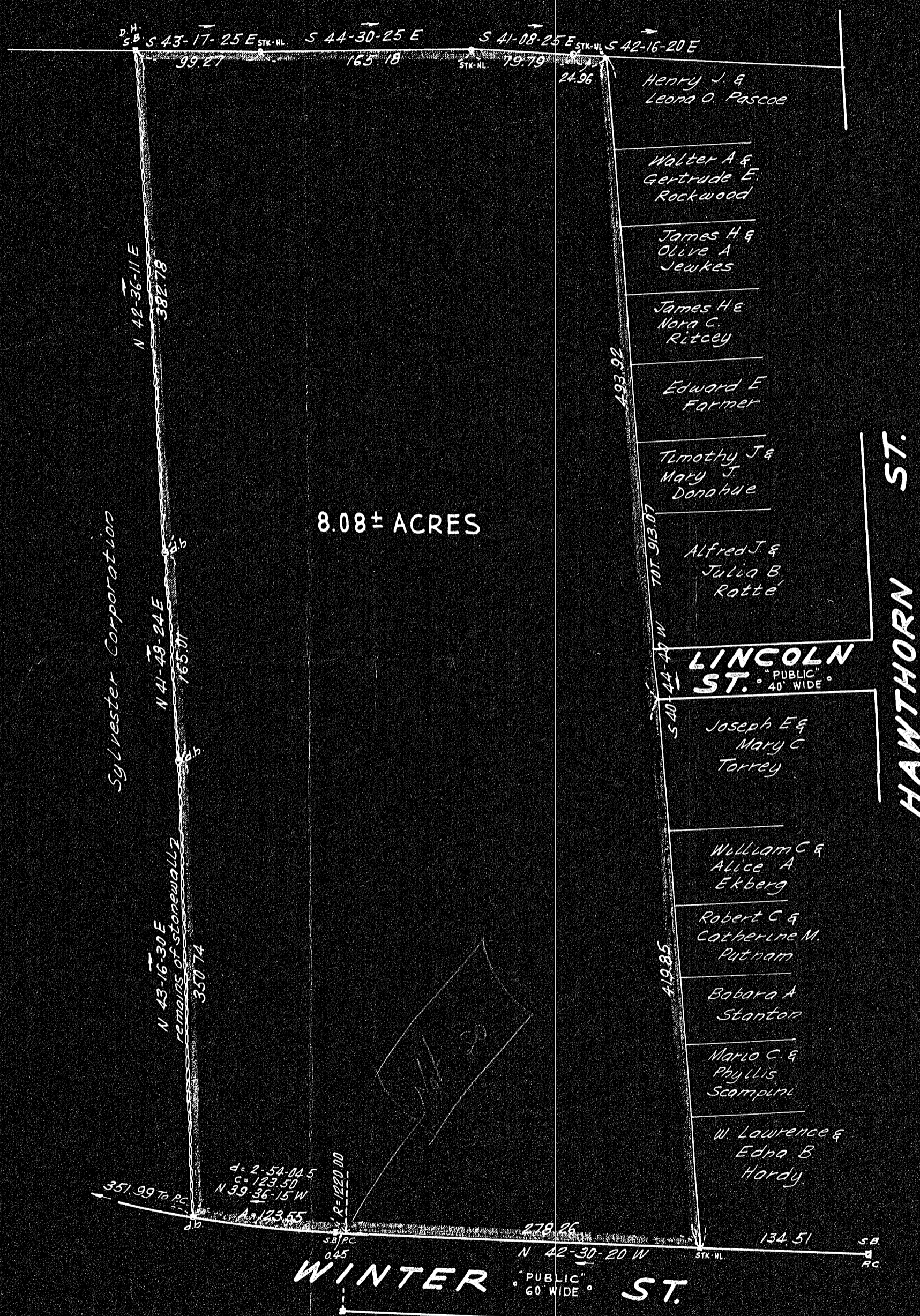
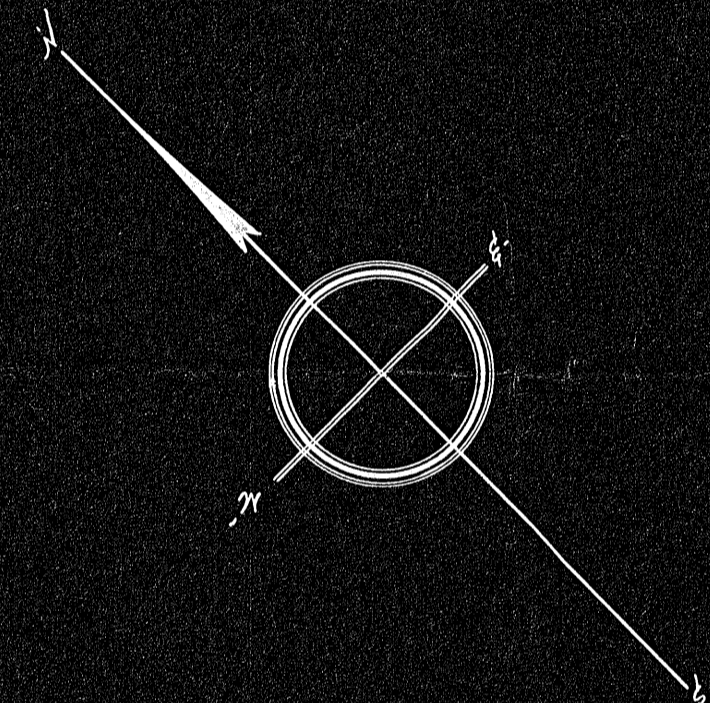


Town of Norwood
(PLAYGROUND.)



TRAVERSE - LOT LINES

BEARING	DIST.	NORTH	SOUTH	EAST	WEST
N 42-30-20 W	278.26	205.13			188.01
N 39-36-15 W	123.50	95.15			78.73
N 43-16-30 E	350.74	255.36		240.43	
N 41-48-24 E	165.01	123.00		110.00	
N 42-36-11 E	382.78	281.75		259.11	
S 43-17-25 E	99.27		72.26	68.06	
S 44-30-25 E	165.18		117.80	115.79	
S 41-08-25 E	79.79		60.10	52.51	
S 42-16-20 E	24.96		18.46	16.79	
S 40-44-40 W	913.07		691.77		595.95
		960.39	960.39	862.69	862.69



PLAN OF LAND
IN
NORWOOD - MASS.

SCALE: 1 IN = 80 FT. OCTOBER 17, 1950.
EVERETT M. BROOKS CO. CIVIL ENGINEERS
NEWTONVILLE MASSACHUSETTS

I certify that this actual survey was made on the ground in accordance with Land Court Instructions of 1950

DATE: October 18, 1950.

Surveyor

ON PLAN

Drawn by _____
Math by _____
Inspected by _____
Approved _____

102410 R. 111
Norf. Co. PL 30

226317

226317