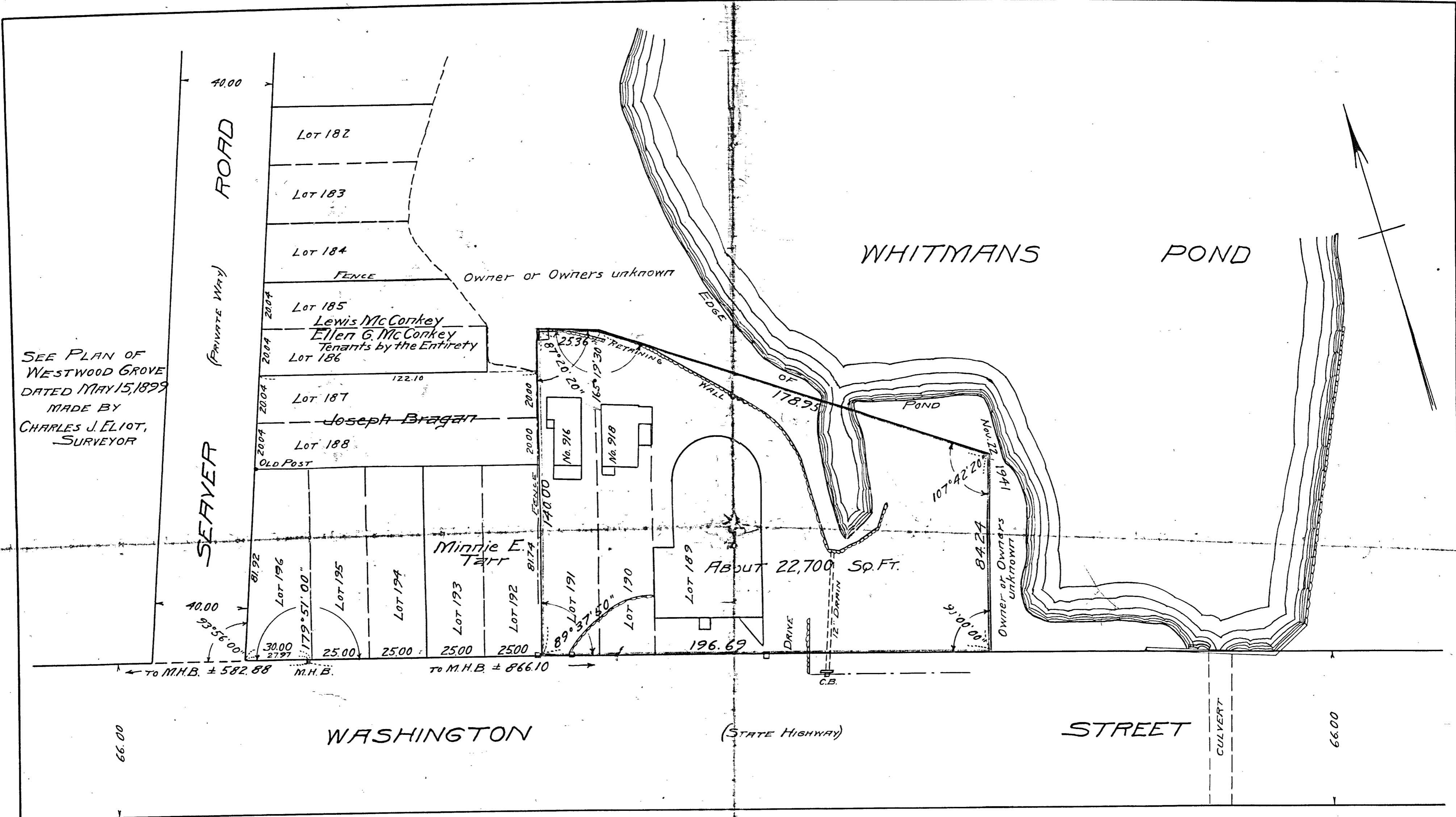


22500A



SEE PLAN OF
WESTWOOD GROVE
DATED MAY 15, 1899
MADE BY
CHARLES J. ELIOT,
SURVEYOR

PLAN OF LAND IN WEYMOUTH, MASS.

SCALE: 1" = 30'

Nov. 24, 1941

RUSSELL H. WHITING, CIVIL ENGINEER
NORTH WEYMOUTH, MASS.

22500
PL30

DEGREE PLAN
Order.....
Inverse Bl'd.....
Altaz.....
Drawn by.....
Math. by.....
Inspected by.....
Approved.....

I CERTIFY THAT THIS SURVEY WAS MADE IN ACCORDANCE WITH
LAND COURT INSTRUCTIONS

DATE: November 24, 1941

Russell H. Whiting, SURVEYOR

22500A