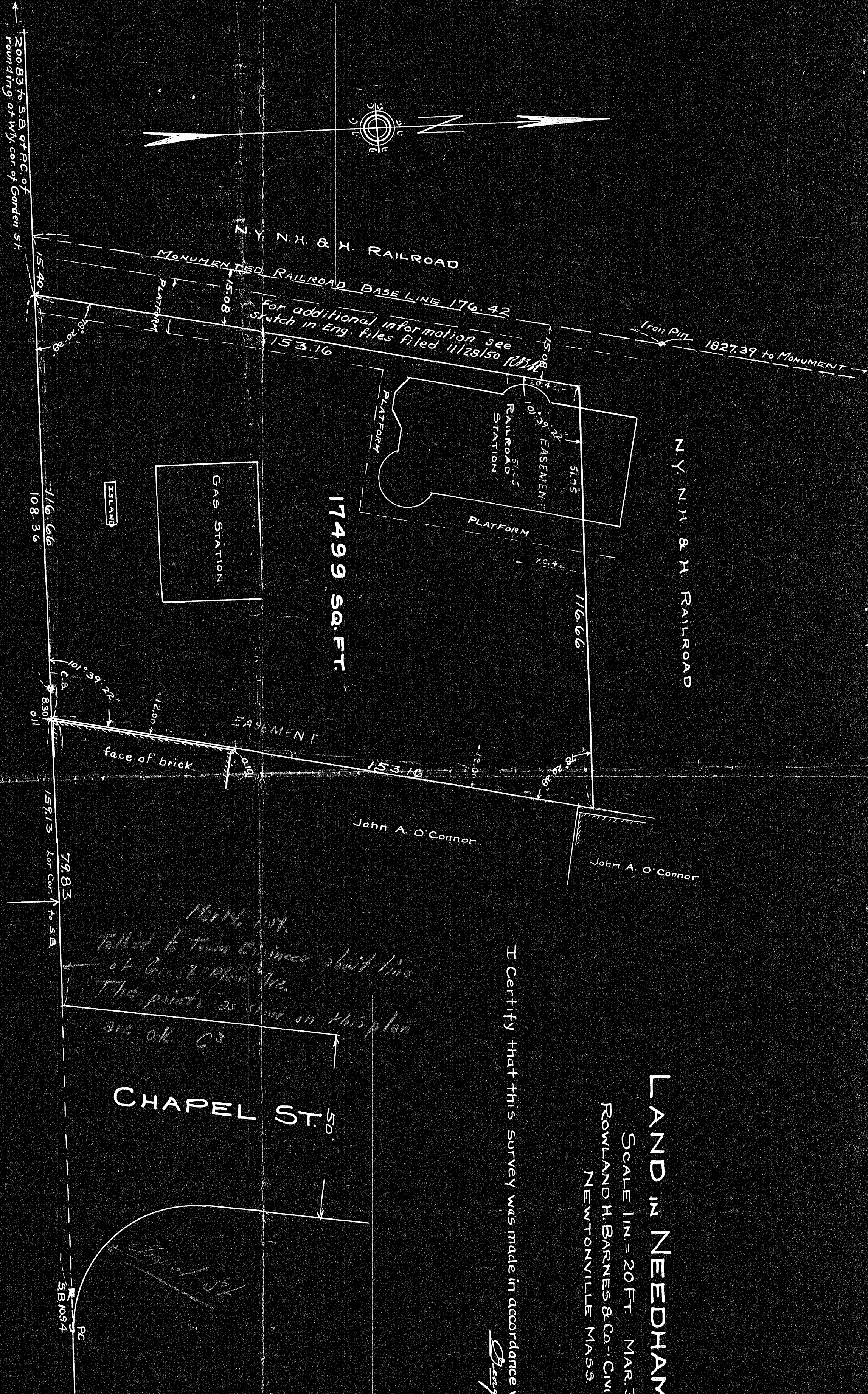


22444A



GREAT PLAIN AVENUE (PUBLIC) 70'

CHAPEL ST. 50'

17499 SQ. FT.

N.Y. N.H. & H. RAILROAD

MONUMENTED RAILROAD BASE LINE 176.42

For additional information see sketch in Eng. files filed 11/28/50 R.B.M.

LAND IN NEEDHAM MASS.  
 SCALE 1" = 20 FT. MAR. 30, 1950  
 ROWLAND H. BARNES & CO. - CIVIL ENGINEERS  
 NEWTONVILLE MASS.

I Certify that this survey was made in accordance with Land Court Instructions  
*George A. McKeown*  
 CIVIL ENGINEER

*North Mt.  
 Talked to Town Engineer about line  
 of Great Plain Ave.  
 The prints as shown on this plan  
 are ok. O.C.*

ORDERED BY	George A. McKeown
TRAVELER	Field No.
DRAWN BY	
CHECKED BY	
INSPECTED BY	
APPROVED	

Note:  
 Additions in violet made per letter in Eng. files dated 2-9-51. C.H.F. 2-12-51  
 Additions in orange per letter filed in Eng. files 7/17/50 R.B.M.

6-23-50 L.T.S.

22444  
Rowl. Co.  
Pl. 37

22444A