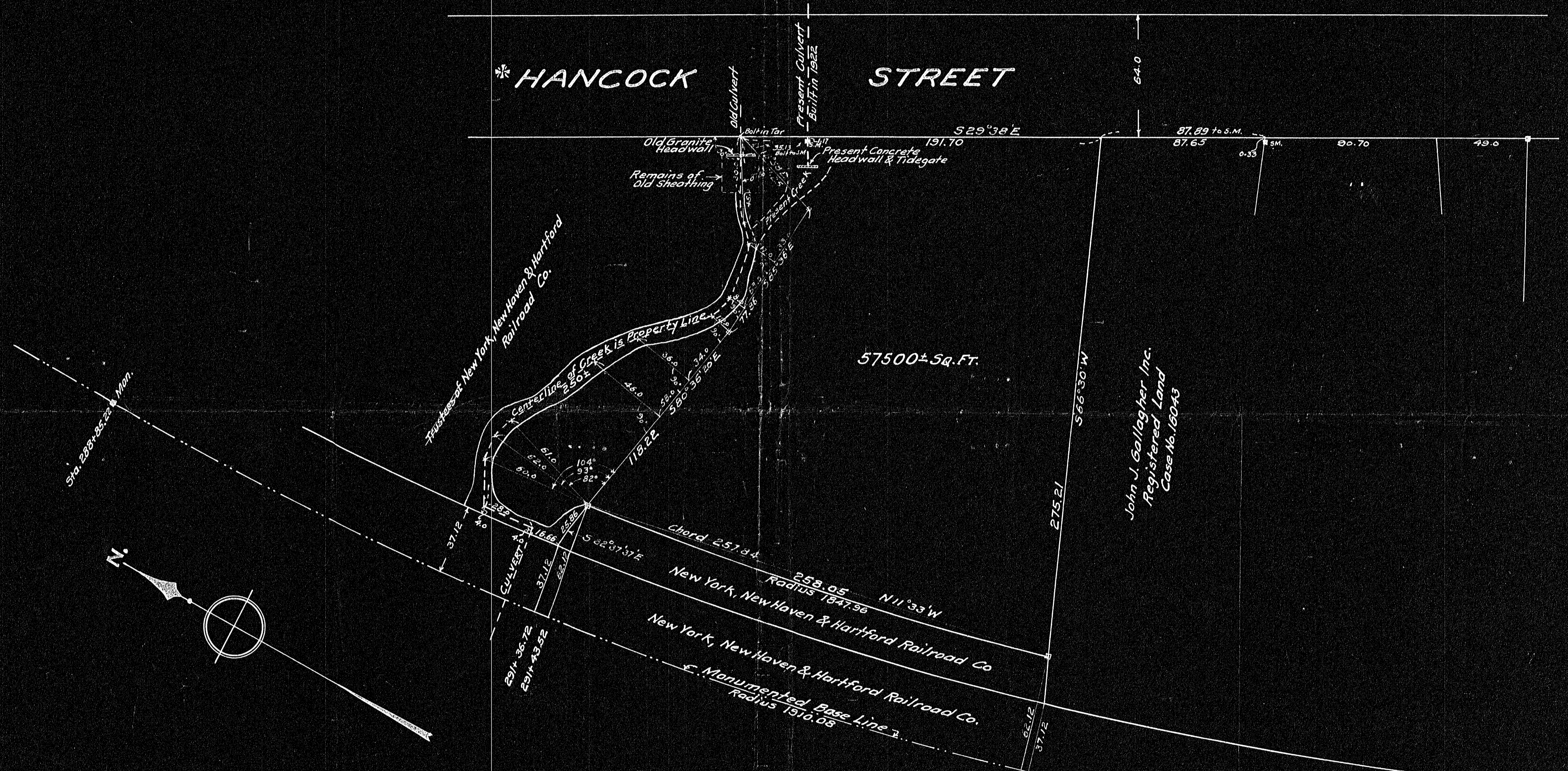


HANCOCK STREET



Plan of Land in Quincy
 Scale 40 feet to an inch
 April 25, 1950
 Ernest W. Branch Inc. Civil Engineers
 11 Adams Building, Quincy

I certify that this survey was made in accordance
 with Land Court instructions
 April 25, 1950
 George H. Newcomb, Surveyor

DECREE PLAN	
Order.....	Papers
Traverse filed.....	YES
Atlas.....	
Drawn by.....	
Math. by.....	
Inspected by.....	
Approved.....	

22426 PLS

6-15-50

296+18.28 MOT

294+10.25
294+13.59

John J. Gallagher Inc.
Registered Land
Case No. 16043

57500± Sq. Ft.