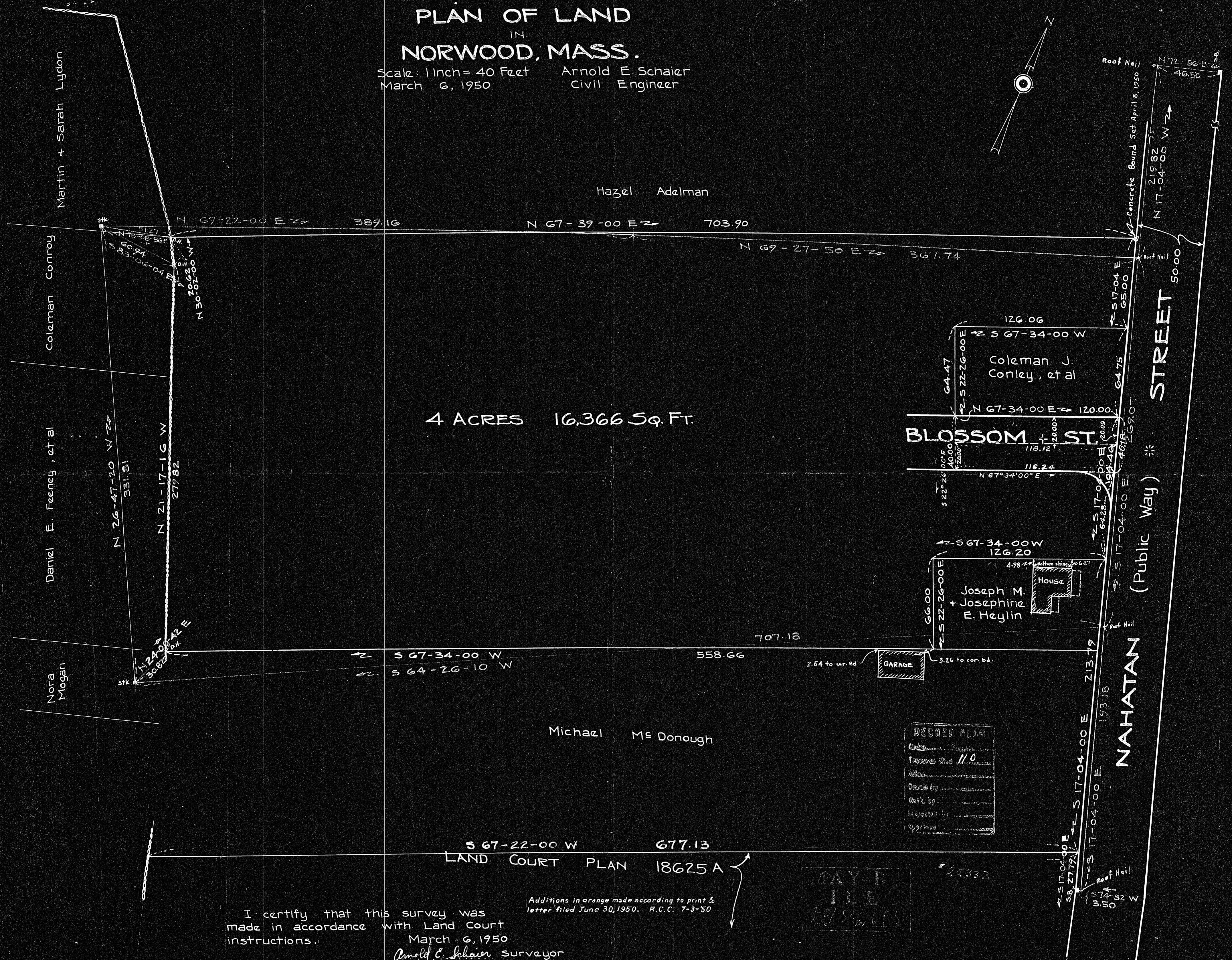
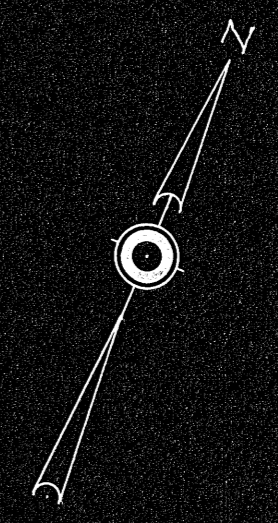


# PLAN OF LAND IN NORWOOD, MASS.

Scale: 1 Inch = 40 Feet  
March 6, 1950  
Arnold E. Schaler  
Civil Engineer



4 ACRES 16,366 Sq. Ft.

BLOSSOM ST.

STREET

NAHATAN  
(Public Way)

DEED PLAN  
Book No. 110  
Page No. 110  
Drawn by  
Cada. by  
Accepted by

MAY 11 1950  
FILED  
17235m. K.F.S.

S 67-22-00 W 677.13  
LAND COURT PLAN 18625 A

I certify that this survey was made in accordance with Land Court instructions.  
March 6, 1950  
Arnold E. Schaler, Surveyor

Additions in orange made according to print & letter filed June 30, 1950. R.C.C. 7-3-50

22333A

22333A