

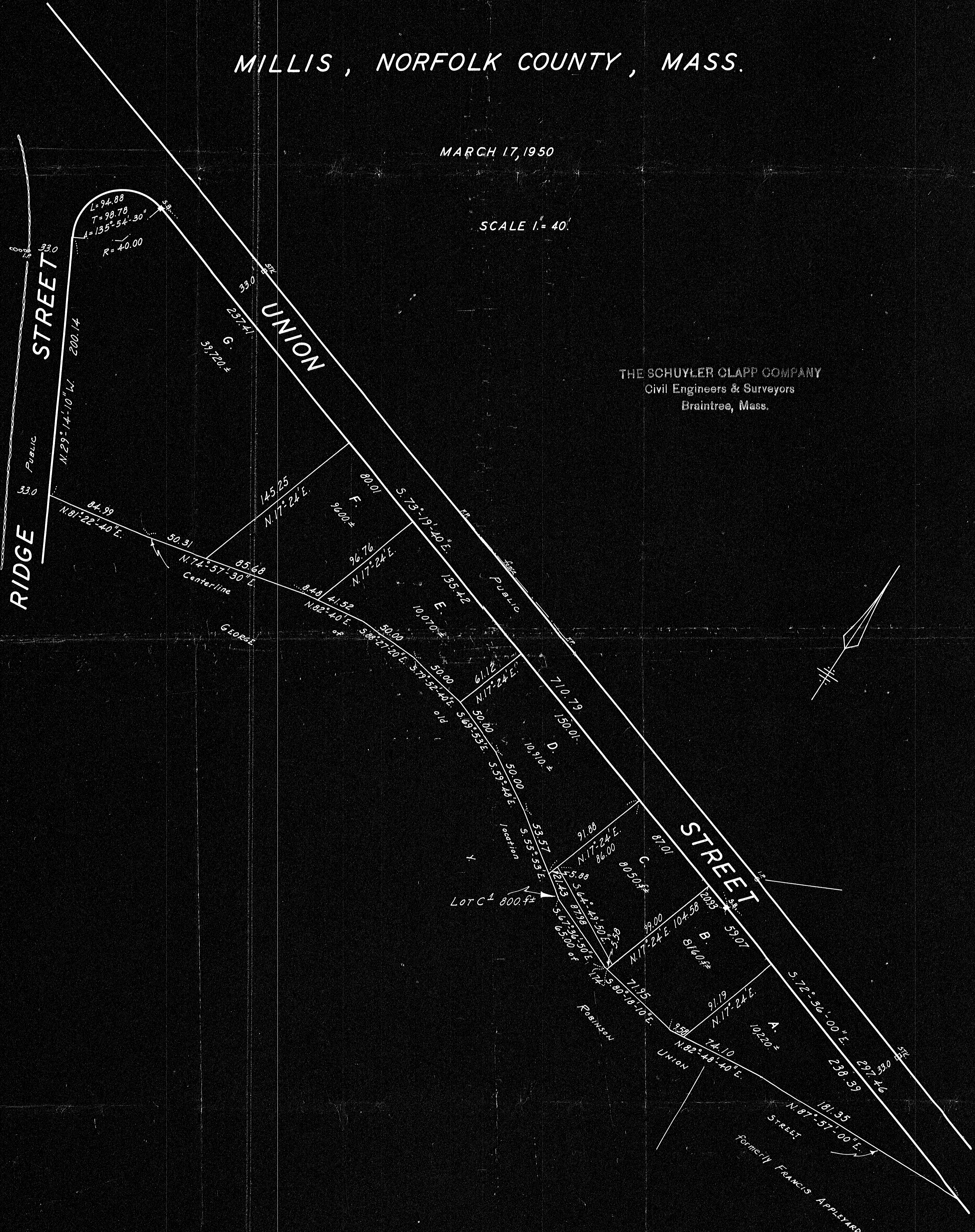
22317A-2

PLAN OF LAND IN  
MILLIS, NORFOLK COUNTY, MASS.

MARCH 17, 1950

SCALE 1" = 40'

THE SCHUYLER CLAPP COMPANY  
Civil Engineers & Surveyors  
Braintree, Mass.



I CERTIFY THAT THIS SURVEY WAS MADE IN  
ACCORDANCE WITH LAND COURT INSTRUCTIONS.

Frederick T. Wolf  
REGISTERED LAND SURVEYOR.

DEED PLAN
Order
Prepared by
Drawn by
Checked by
Inspected by
Approved

MAY BE  
FILED  
4-21-50  
L.T.S.

J.N. 5005

22317A