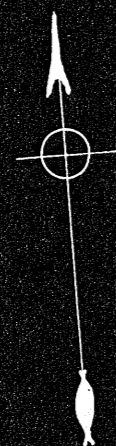


PLAN OF LAND
IN
BRAINTREE, MASS.
SHOWING SUB-DIVISION OF LOT
OWNED BY A.C. TROJANO CO., INC.

SCALE 1" = 20' JANUARY 1950
C.H. McLAUGHLIN SURVEYOR
BRAINTREE MASS.



22232A

ADAMS

STREET

(COUNTY WAY)

S.B.
50.00
RADIUS 2550.00
S.B.

S. 70°-42'-00" E.

S.B. 33.00

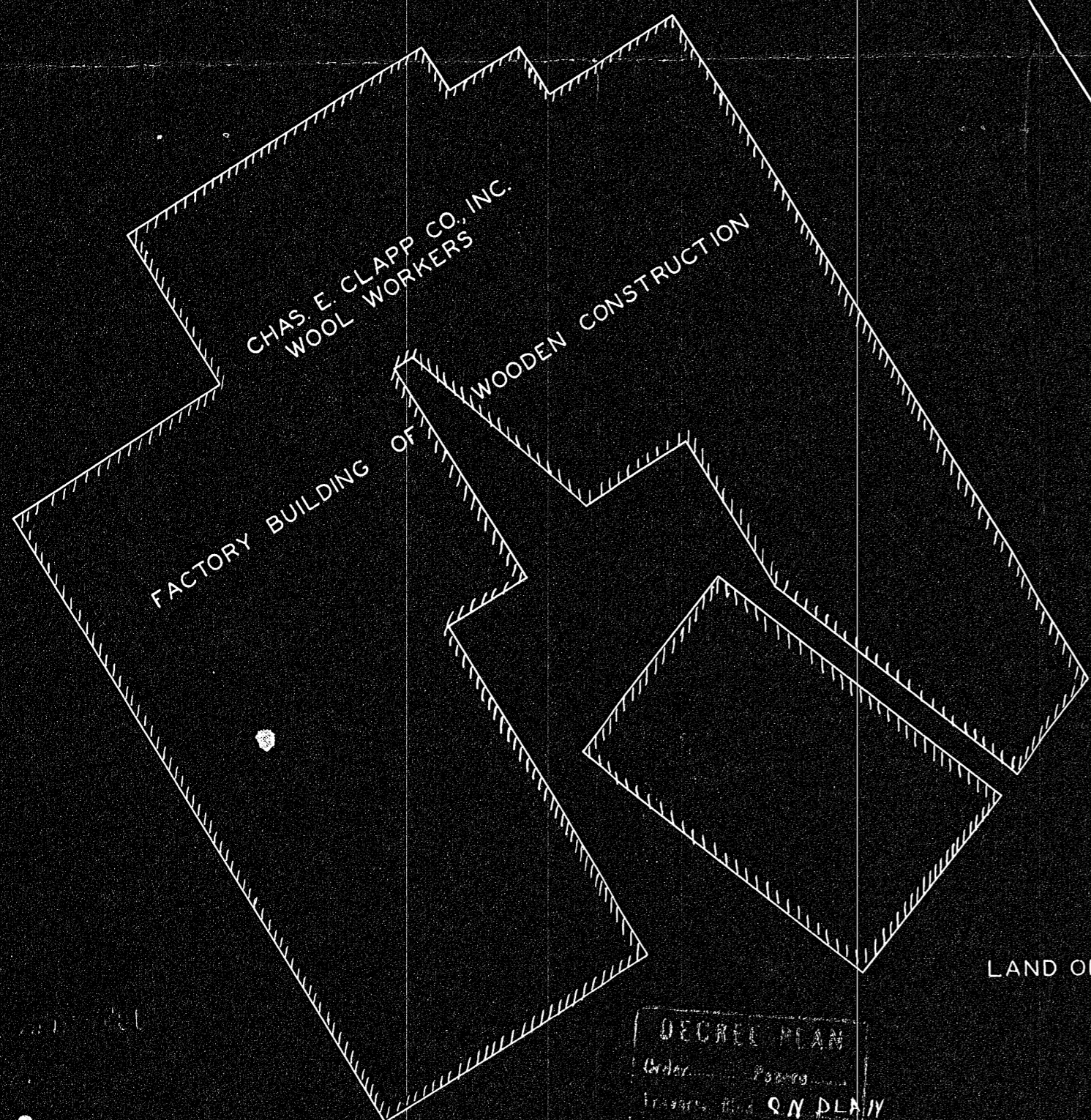
STK.

47.28

732.50

STK.

S. 71°-17'-30" E.

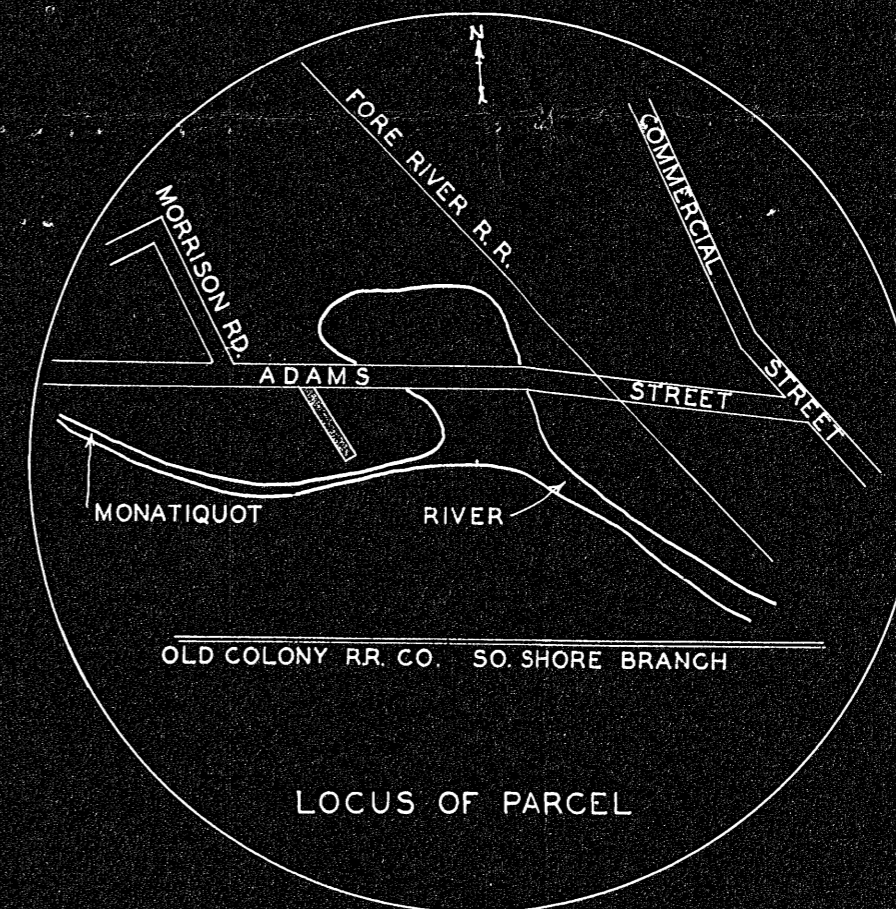


CHAS. E. CLAPP CO., INC.
WOOL WORKERS

WOODEN CONSTRUCTION

FACTORY BUILDING OF

LAND OF CHAS. E. CLAPP & CO., INC.



LOCUS OF PARCEL

BEARING	DISTANCE	LATITUDE		DEPARTURE	
		N.	S.	E.	W.
S. 71-17-30 E.	47.28		15.18	44.79	
S. 13-31-00 E.	180.50		175.50	42.19	
S. 76-29-00 W.	40.00		9.35		38.89
N. 13-31-00 W.	205.70	200.00			48.08
	473.48	200.00	200.03	86.98	86.97

MAY BE FILED
1/19/50

STK.
D.H. 120
40.00
S. 76°-29'-00" W.

LAND OF A.C. TROJANO CO., INC.

DECRET PLAN
Order of the Court
Entered this 19th day of January 1950
Attest
Surveyor
Charles H. McLaughlin

I CERTIFY THAT THIS SURVEY WAS
MADE IN ACCORDANCE WITH LAND COURT
INSTRUCTIONS.
DATE: JANUARY 1950

Charles H. McLaughlin
SURVEYOR

MONATIQUOT RIVER

22232

22232A