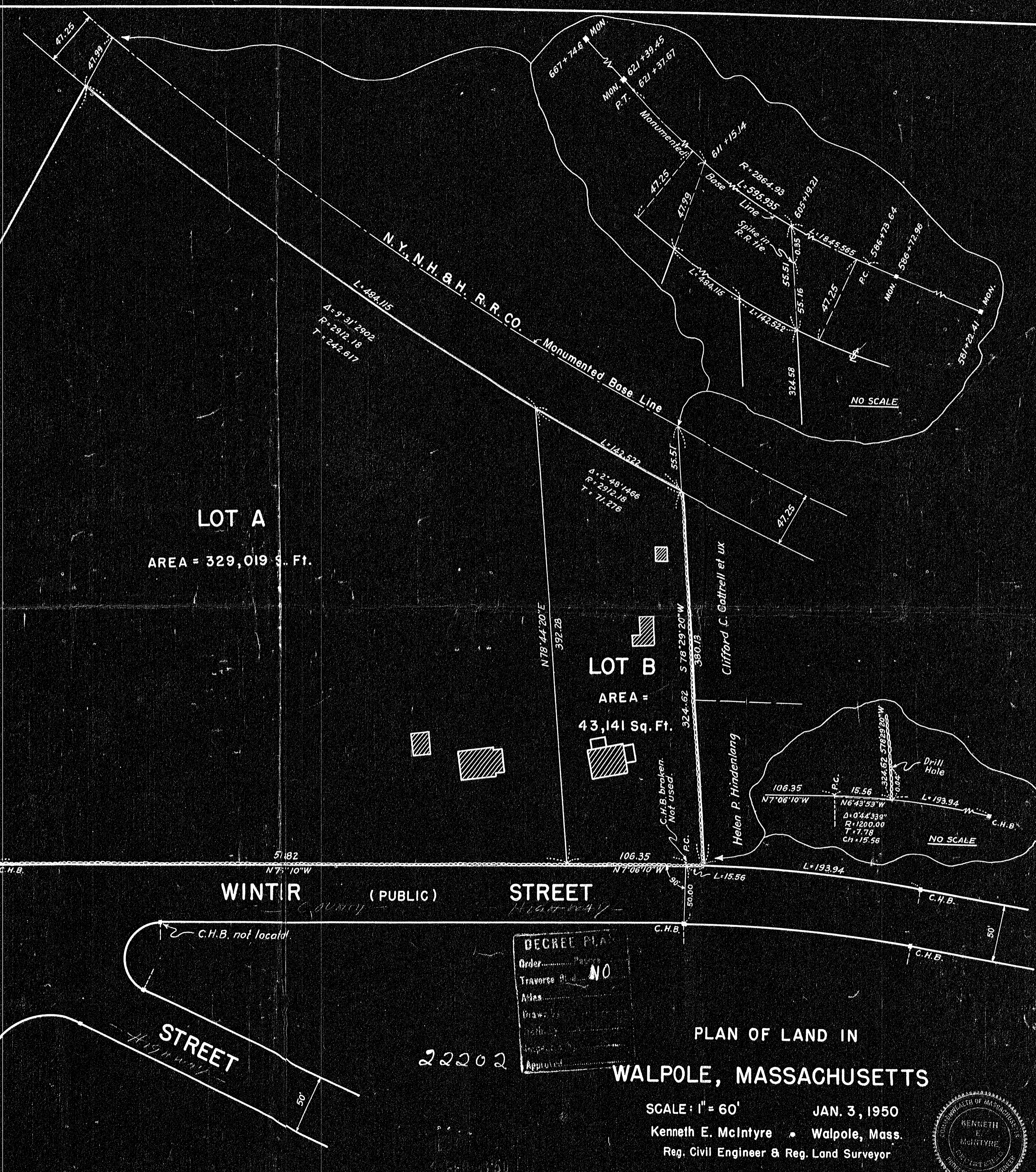
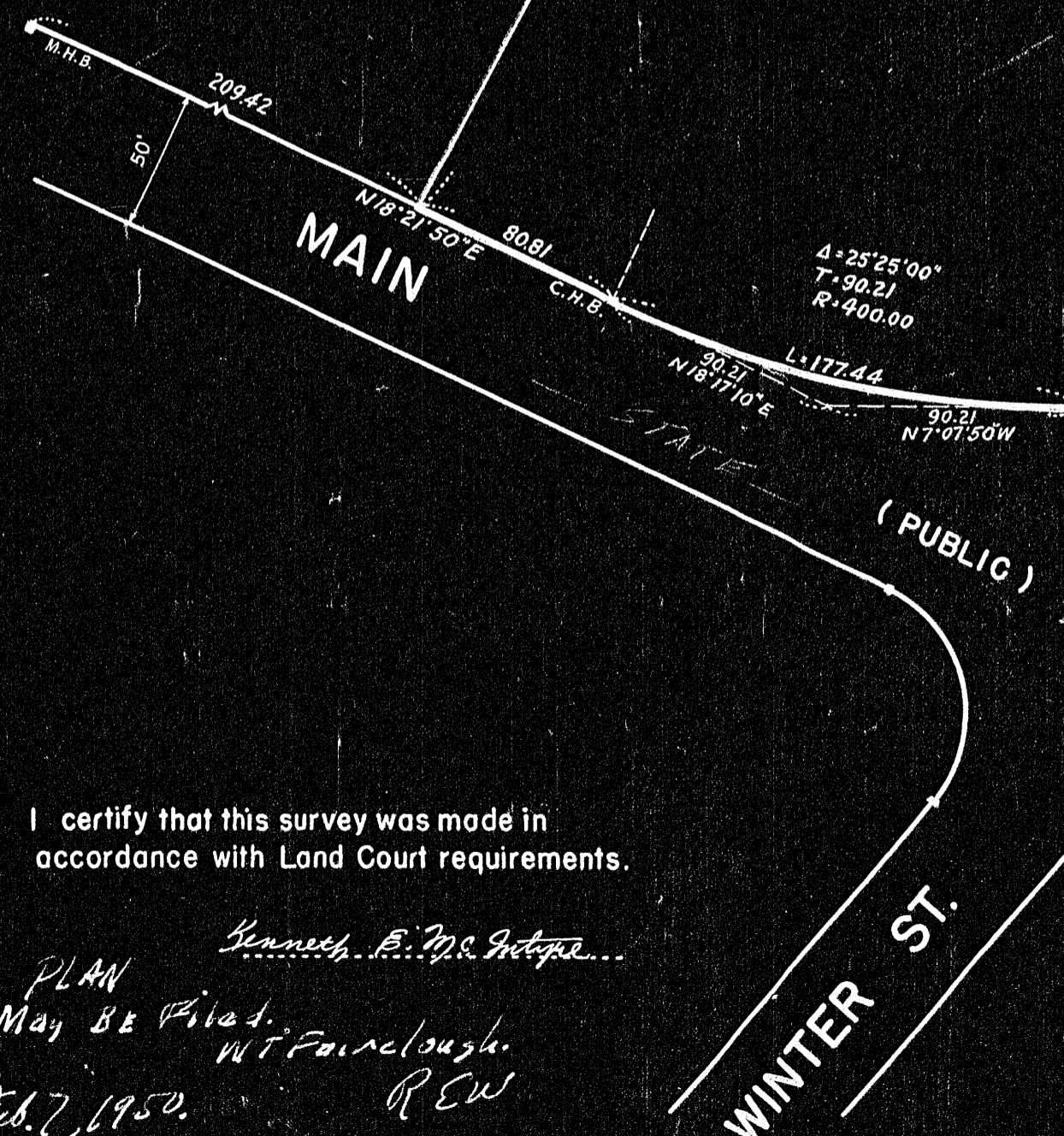


Alfred J. Goffinet et ux
L. C. Case 12,404

LOT A
AREA = 329,019 Sq. Ft.

LOT B
AREA = 43,141 Sq. Ft.



I certify that this survey was made in accordance with Land Court requirements.

PLAN
May 8^e Filed
Feb. 7, 1950.
Kenneth E. McIntyre
W. T. Fairclough
R.E.W.

DECREE PLAN
Order.....
Traverse the NO
Area.....
Draw.....
Inspected.....
Approved.....

PLAN OF LAND IN
WALPOLE, MASSACHUSETTS

SCALE: 1" = 60'
JAN. 3, 1950
Kenneth E. McIntyre • Walpole, Mass.
Reg. Civil Engineer & Reg. Land Surveyor

