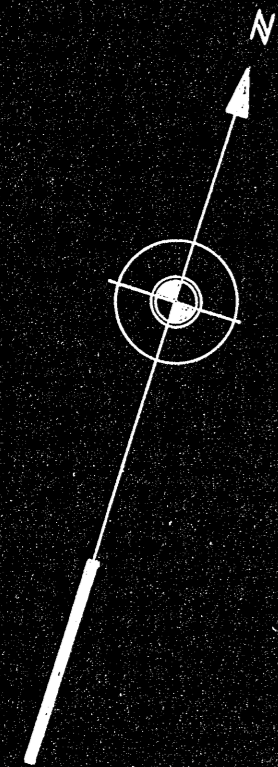
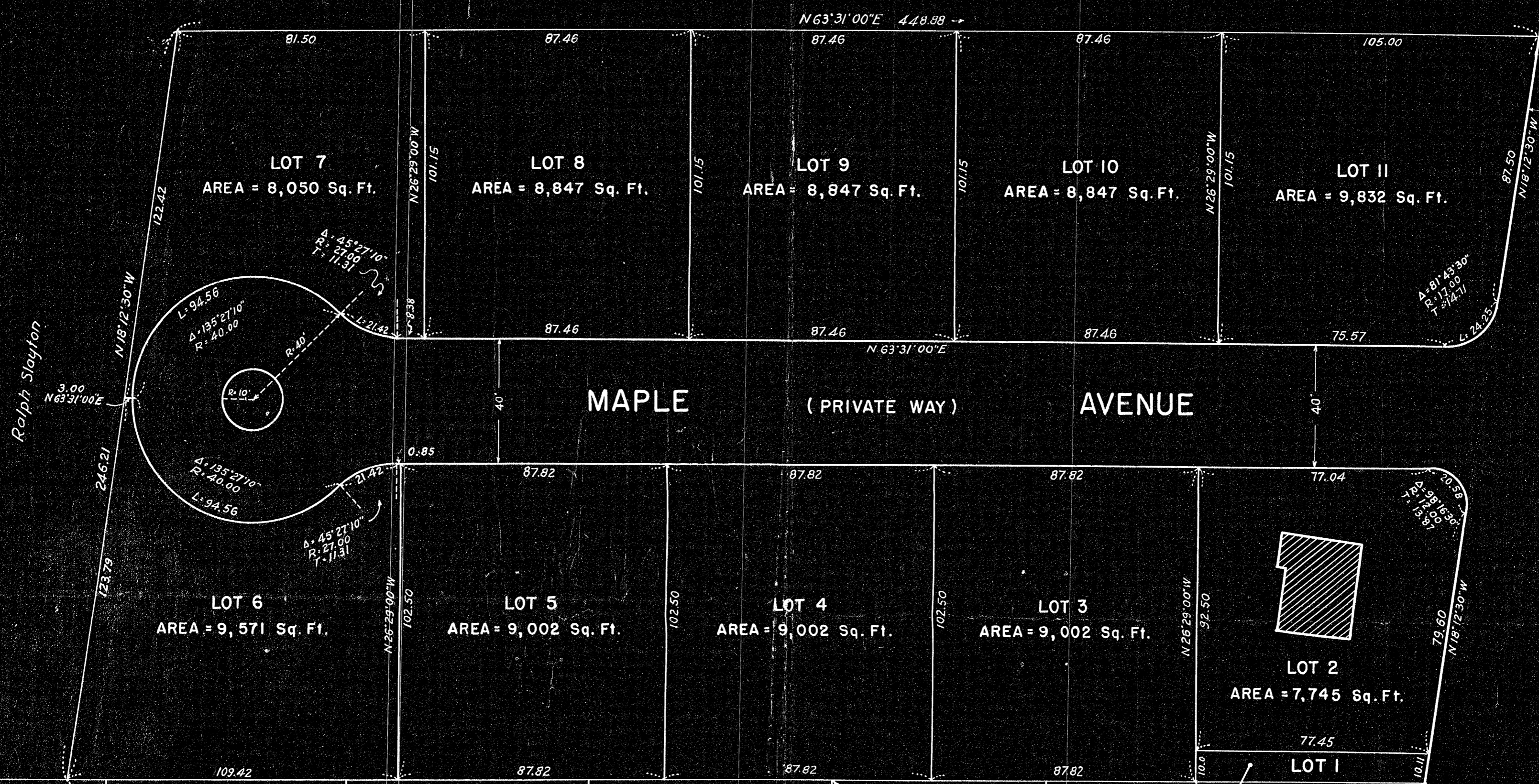


22065A

22065A



Zillah M. and Perry M. Rogers



Geo. Y. Robinson

Mary N. Hill

Chas. and Evelyn Herren

Sylvester & Ann Long

Paul M. Grenier
Land Court Case No. 21848

PLAN OF LAND IN
MILLIS, MASSACHUSETTS

SCALE: 1" = 30' SEPT. 9, 1949

Kenneth E. McIntyre Walpole, Mass.
Reg. Civil Engineer & Reg. Land Surveyor

I certify that this survey was made in accordance
with Land Court requirements.

Kenneth E. McIntyre
Reg. Civil Engineer & Reg. Land Surveyor



DEED PLAN
Order of Papers
Traverse Method
Atlas
Drawn by
Checked by
Inspected by
Approved

(COUNTY RELOCATION OF JULY 23, 1929)