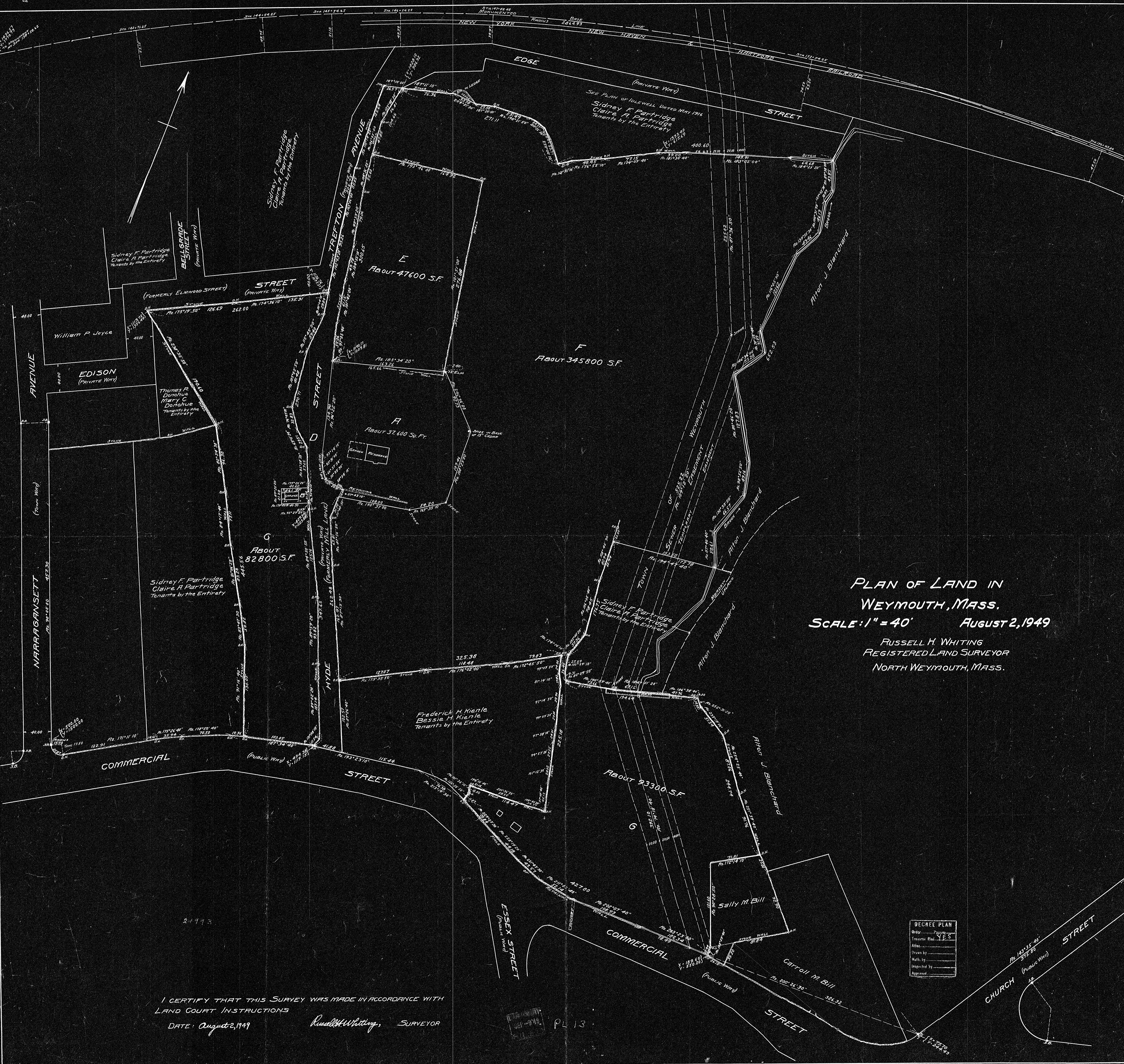


316013

316013



PLAN OF LAND IN
WEYMOUTH, MASS.
SCALE: 1" = 40' AUGUST 2, 1949
RUSSELL H. WHITING
REGISTERED LAND SURVEYOR
NORTH WEYMOUTH, MASS.

DEGREE PLAN	
Order	_____
Traverse	_____
Area	_____
Drawn by	_____
Checked by	_____
Approved	_____

I CERTIFY THAT THIS SURVEY WAS MADE IN ACCORDANCE WITH
LAND COURT INSTRUCTIONS
DATE: August 2, 1949
Russell H. Whiting, SURVEYOR

PL 13