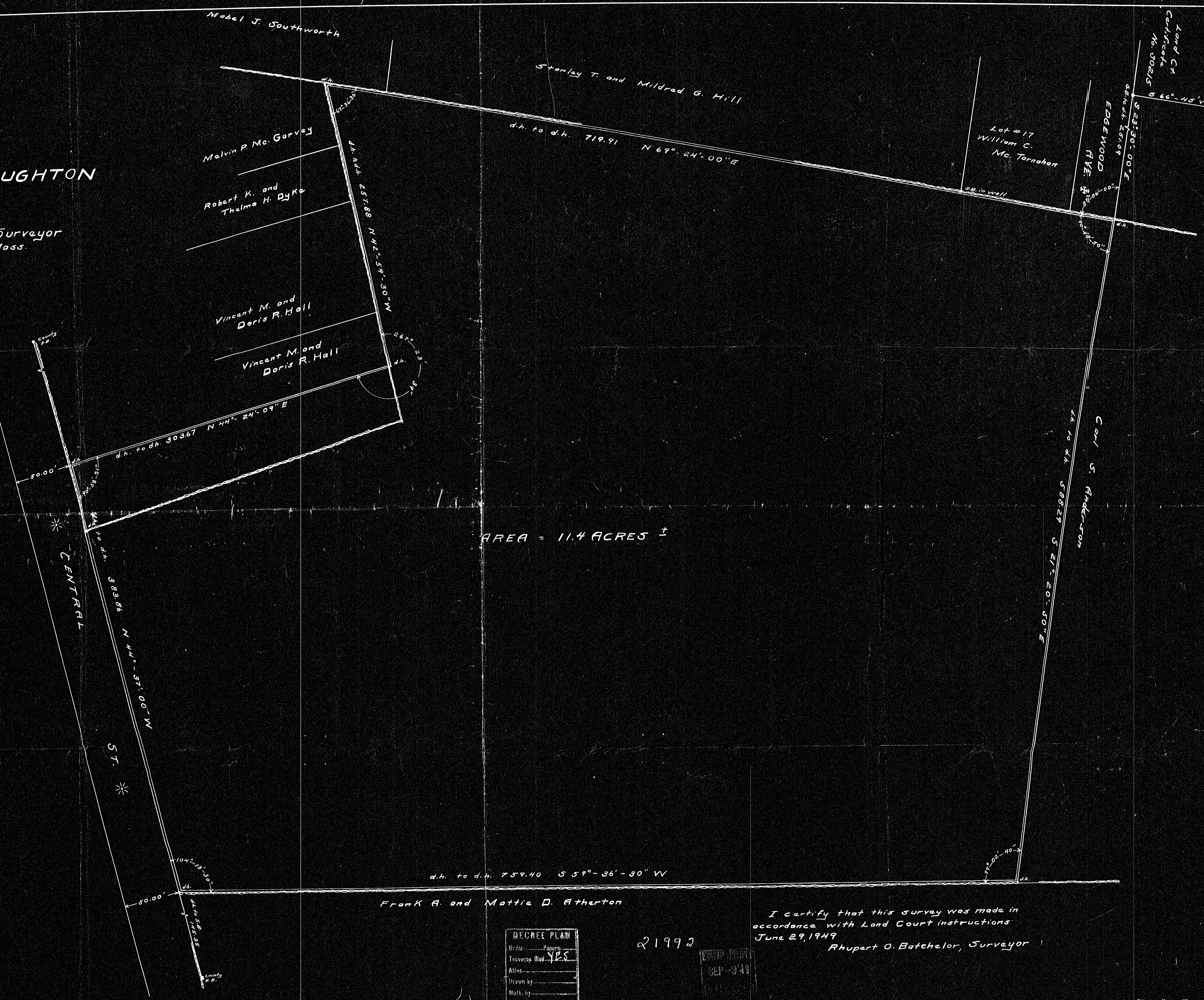
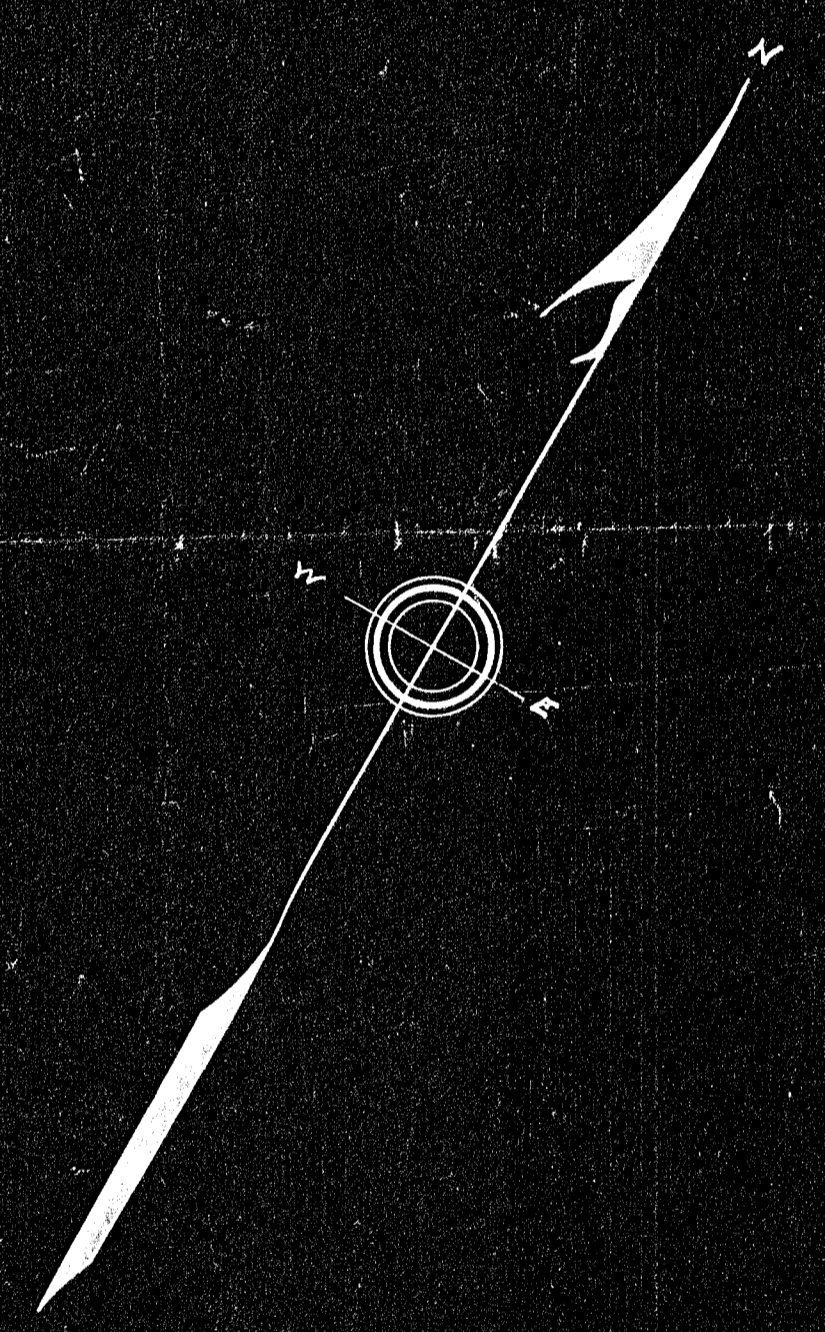


# PLAN OF LAND IN STOUGHTON

Scale 40 feet to an inch  
June 29, 1949  
Rupert O. Batchelor Surveyor  
136 Ash St. Stoughton, Mass.



AREA = 11.4 ACRES ±

I certify that this survey was made in accordance with Land Court instructions  
June 29, 1949  
Rupert O. Batchelor, Surveyor

DEED PLAN
Order Papers
Traverse Blot <b>YES</b>
Atlas
Drawn by
Math. by
Inspected by
Approved

21992

