

ST 0137

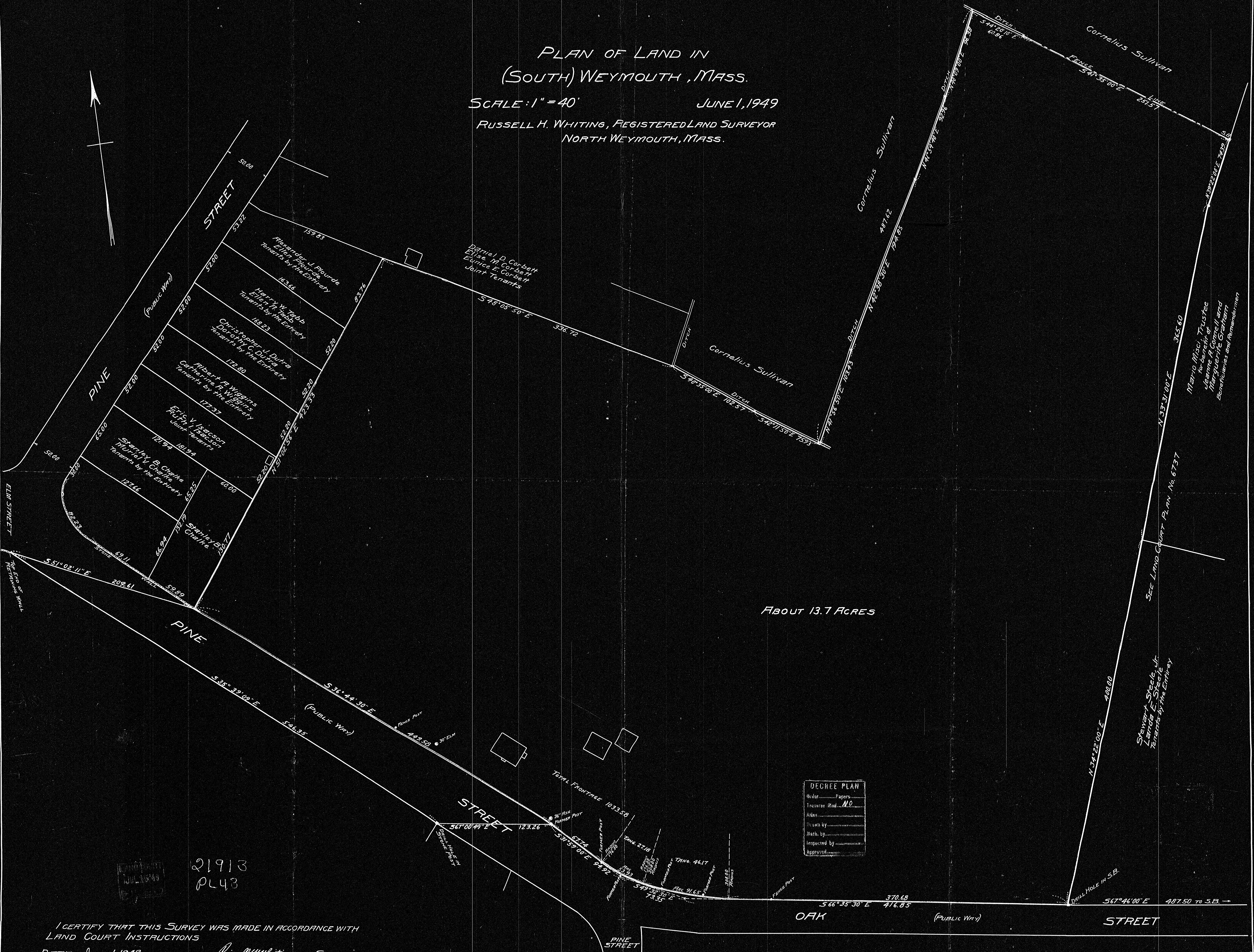
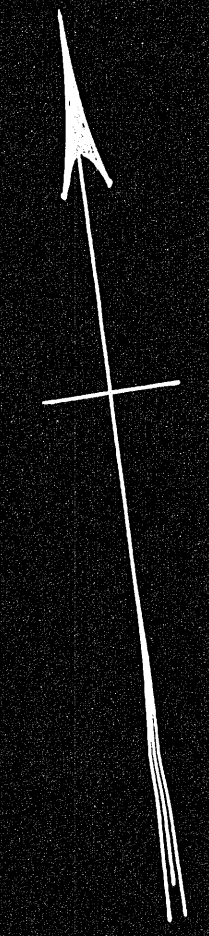
ST 0137

PLAN OF LAND IN (SOUTH) WEYMOUTH, MASS.

SCALE: 1" = 40'

JUNE 1, 1949

RUSSELL H. WHITING, REGISTERED LAND SURVEYOR
NORTH WEYMOUTH, MASS.



DEGREE PLAN	
Order	Papers
Traverse Method	NO
Aides	
Drawn by	
Math. by	
Inspected by	
Approved	

21913
PL43

I CERTIFY THAT THIS SURVEY WAS MADE IN ACCORDANCE WITH
LAND COURT INSTRUCTIONS
DATE: June 1, 1949
Russell H. Whiting SURVEYOR